

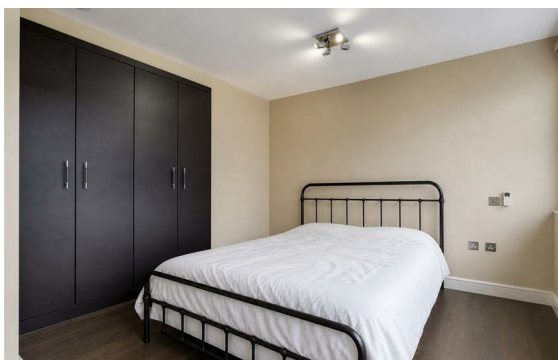


Edgware Road, Paddington, London, W2

Rent £1,505 Per Month

4 Bed | 3 Bath | 1 Reception

Please call us on 020 7724 2233 or email us info@newingtonstates.com to book a viewing.



A well-proportioned four-bedroom apartment offering generous living space and a practical layout in a prime central London location.

The property comprises a bright reception room, a separate fully fitted kitchen, and four well-sized bedrooms. A family bathroom is complemented by a shower room and an en-suite, providing flexibility for families or sharers. The apartment also benefits from a private balcony and excellent natural light throughout.

Ideally located close to Hyde Park, with excellent transport links via Marble Arch Station.

EPC Rating: C

Energy Efficiency Rating: C

Agents Note: Whilst every care has been taken to prepare these particulars, they are for guidance purposes only. All measurements are approximate and are for general guidance purposes only and whilst every care has been taken to ensure their accuracy, they should not be relied upon and potential buyers/tenants are advised to recheck the measurements.

NEWINGTON
— ESTATES —

60 Upper Montagu Street

London

W1H 1SN

020 7724 2233

info@newingtonstates.com

<http://www.newingtonstates.com>