



Jersey Street, E2

£2,500 Per calendar month

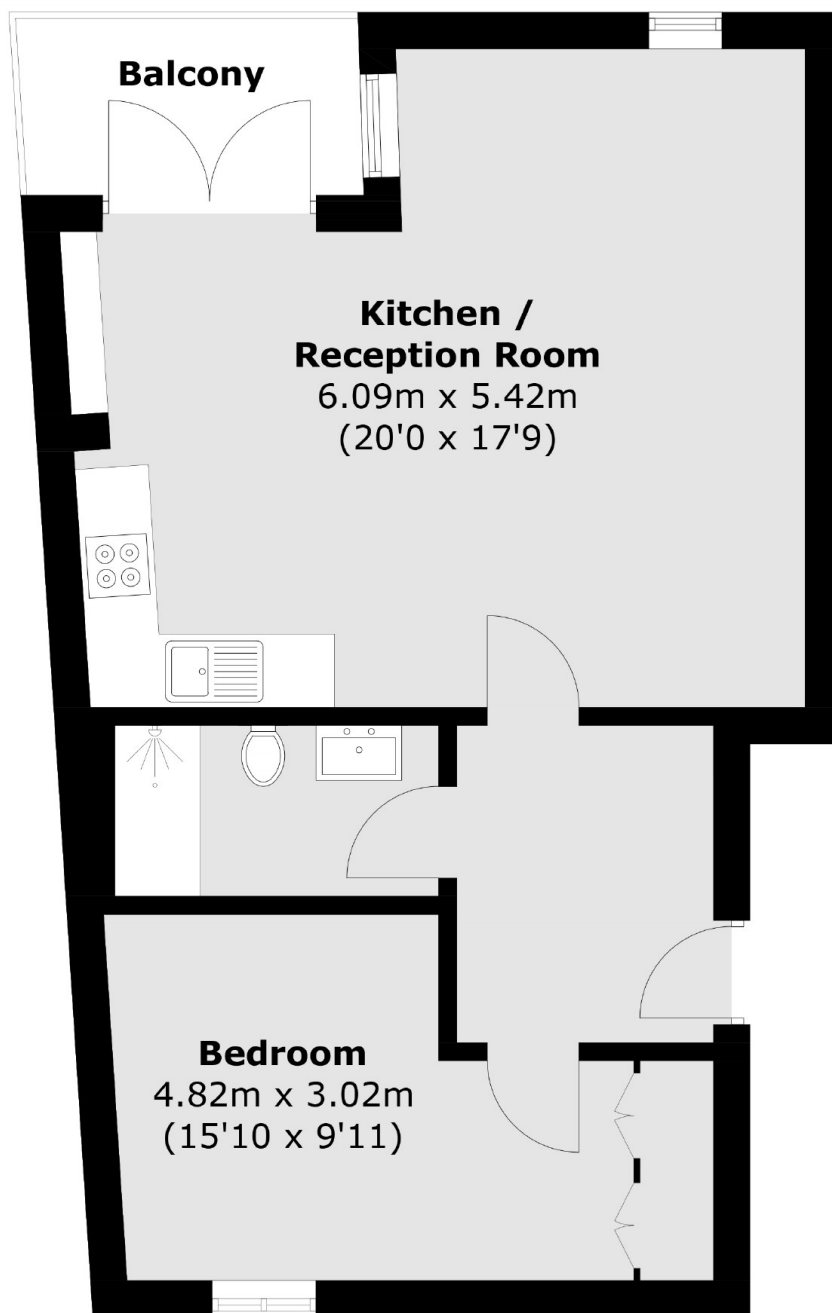
A modern first floor apartment with a private balcony. This apartment which is set over 550 Sq ft has a large open plan reception and kitchen area, modern bathroom, large double bedroom and private balcony. The property is available furnished.

Threaders Apartment House is located a short walk to Shoreditch nightlife with local amenities found on Bethnal Green Road. Transport Links include Bethnal Green Underground Station (Central Line), Bethnal Green Rail Station (National Rail) and continuous bus connections to the City and the West End.

Features

- Modern
- First Floor
- 556 Sq ft
- Private Balcony
- Open Plan
- Great Location

Jersey Street,
London, E2



Total area (approx.): 51.9 sq. m (558.6 sq. ft)
Balcony : 4.0 sq. m (43.0 sq. ft)

Dexters

Shoreditch
44 Great Eastern Street
London
EC2A 3EP
Lettings
0207 483 6372

Energy Rating: B. We aim to make our particulars both accurate and reliable. However they are not guaranteed; nor do they form part of an offer or contract. If you require clarification on any points then please contact us, especially if you're traveling some distance to view. Please note that appliances and heating systems have not been tested and therefore no warranties can be given as to their good working order.

 **RICS** | Regulated
Estate Agent
and Letting Agent

dexters.co.uk