



Fulham Road, SW10

£820 Per week

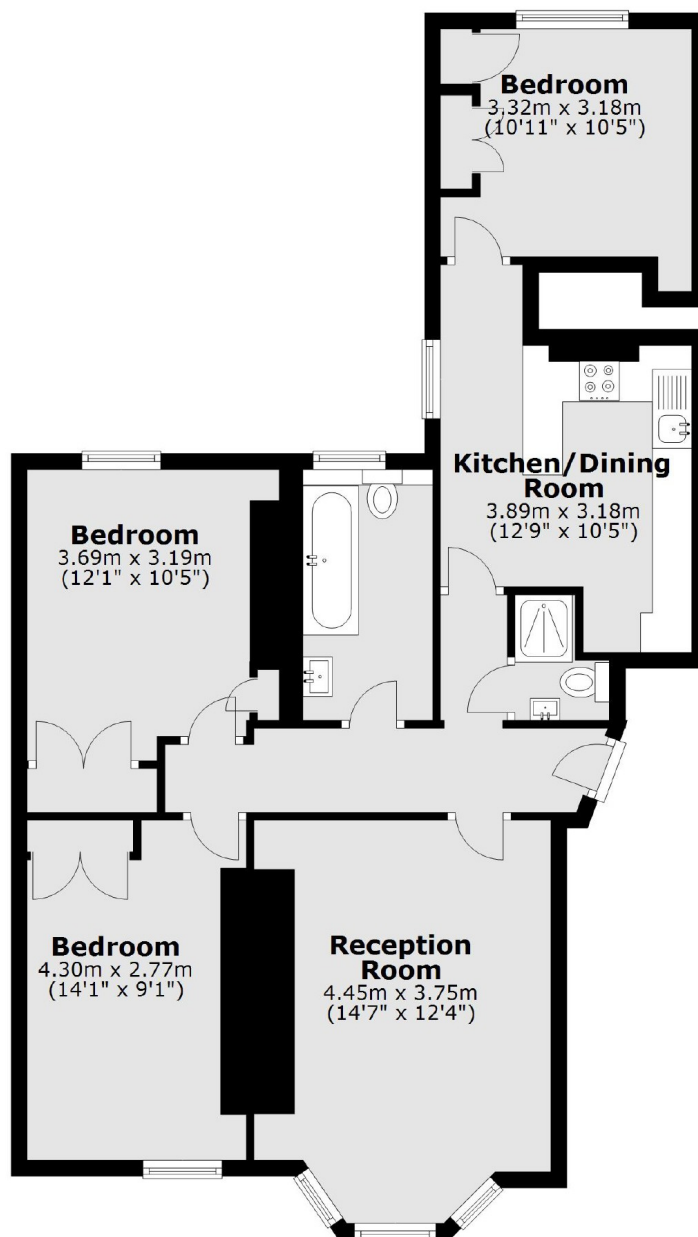
NO HMO Licence Applicable. A recently refurbished three double bedroom apartment in a mansion building. The property has high ceilings, ample storage and finished to a high standard.

Conveniently located on the Western boundary of the Royal Borough of Kensington and Chelsea on the Fulham Road which has a desirable selection of shopping and restaurant amenities, whilst just a short walk to Fulham Broadway.

Features

Three Bedrooms
Two Bathrooms
Recently Refurbished
High Ceilings
Ample Storage

Fulham Road, London, SW10



Total area: approx. 80.3 sq. metres (864.5 sq. feet)