



Guide Price
£315,000

Freehold

2x  1x  1x 

**Gentian Close,
Weaving, Maidstone,
Kent, ME14**

OVER 60?

Secure this property
for up to **59% less!**

Wards
Helping you move forwards



Main features

- Short drive to M20 motorway, ideal for commuters
- Stunning kitchen with stylish colour choices
- Spacious accommodation with utility room, cloakroom and conservatory
- 1 allocated parking space, with further on street parking available
- Popular location, just walking distance to Grove Green amenities

Accommodation

GROUND FLOOR

Porch
 Entrance Hall
 Kitchen: 10'9 x 8'2 (3.28m x 2.49m)
 Lounge: 13'11 x 12'0 (4.24m x 3.66m)
 Utility Room: 5'2 x 3'2 (1.58m x 0.97m)
 Cloakroom: 5'8 x 3'5 (1.73m x 1.04m)
 Conservatory: 9'7 x 9'2 (2.92m x 2.80m)

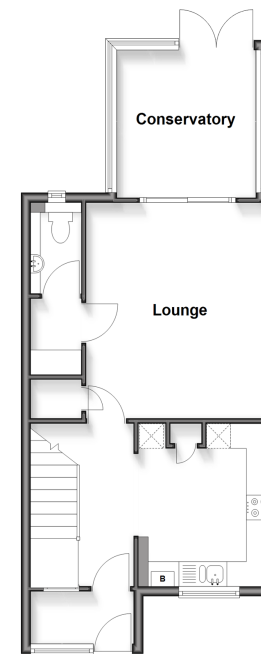
FIRST FLOOR

Landing
 Bedroom 1: 12'2 x 11'10 (3.71m x 3.61m)
 Bedroom 2: 9'7 x 9'1 (2.92m x 2.77m)
 Bathroom: 6'4 x 6'2 (1.93m x 1.88m)

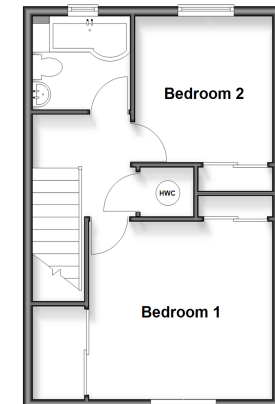
OUTSIDE

Front and Rear Gardens
 Allocated Parking

Ground Floor
 Approx. 50.1 sq. metres (539.3 sq. feet)



First Floor
 Approx. 38.7 sq. metres (416.4 sq. feet)



Call Bearsted - 01622 730955 ■ wardsofkent.co.uk

■ Legal advice should be taken to verify fixtures/fittings, planning, alterations and/or lease details
 ■ Through a Homewise Home For Life Plan people aged 60+ can secure this property for up to 59% less, by purchasing a Lifetime Lease

■ Appliances & services are untested, dimensions are approximate and floor plans are not to scale



12326488/20260117/SG/DF