

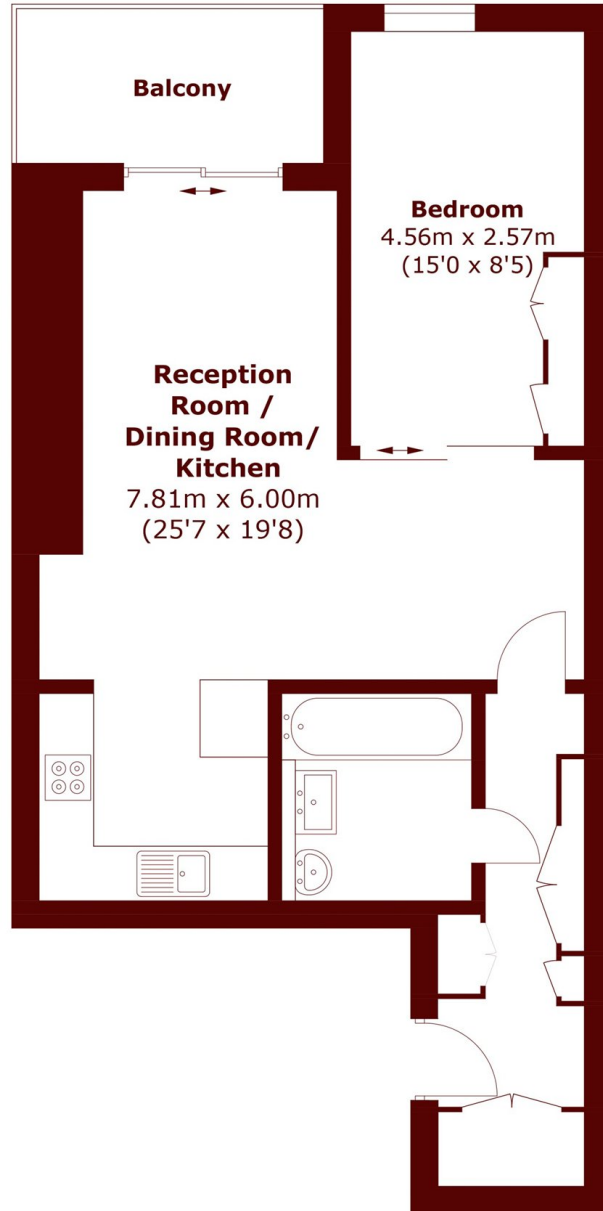


## The Avenue, NW6

£425,000



- Chain Free
- Modern
- Communal gardens
- Concierge
- Wooden Floors
- Gym



Total area (approx.): 54.9 sq. m (590.9 sq. ft)  
Balcony : 5.7 sq. m (61.3 sq. ft)

## Marsh & Parsons Queen's Park

56 Salusbury Road, London,  
NW6 6NN  
020 7624 4513