



7 Pavilion View

Ashford, TN23 1BY

Price £420,000

A centrally located townhouse, perfectly positioned for access to Ashford Town & mainline station.

The very well presented accommodation comprises an entrance hall, cloakroom, kitchen/dining room, sitting room, four bedrooms, en suite and family bathroom/WC. Gas central heating and double glazing are installed, allocated parking and an enclosed rear garden.

NO ONWARD CHAIN

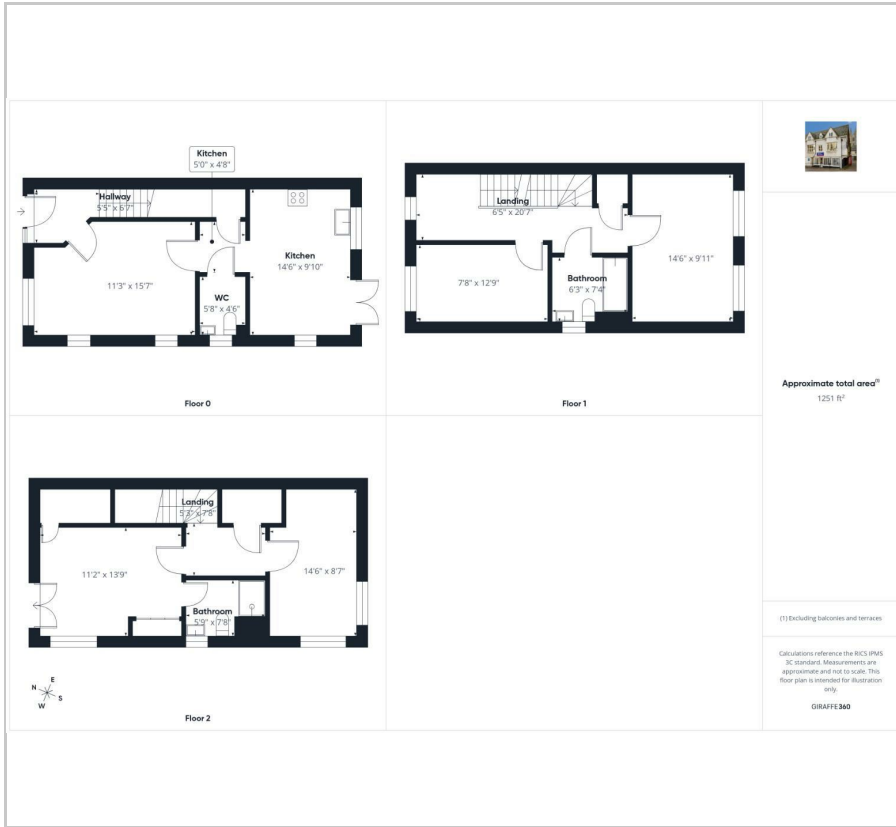
- MODERN TOWNHOUSE
- FOUR BEDROOMS
- EN SUITE & FAMILY BATHROOM
- CENTRAL LOCATION SHORT WALK FROM TOWN & MAINLINE STATION
- ALLOCATED PARKING
- EASY TO MAINTAIN REAR GARDEN
- KITCHEN/DINING ROOM
- GROUND FLOOR CLOAKROOM
- NO ONWARD CHAIN

Viewing

Please contact our Ashford Office on 01233 646411 if you wish to arrange a viewing appointment for this property or require further information.



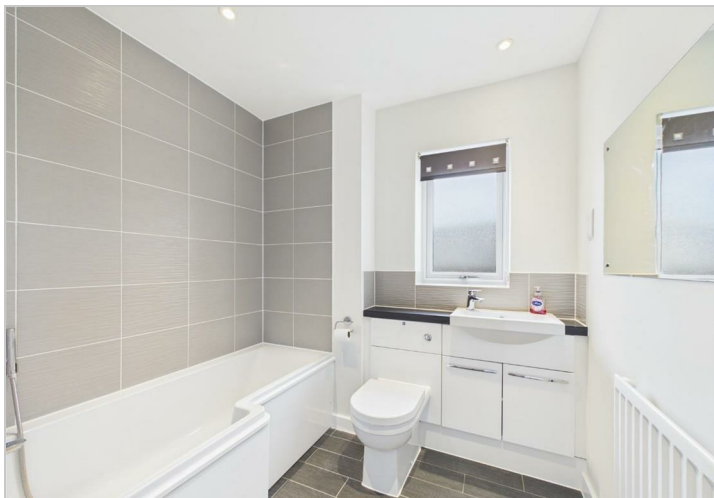
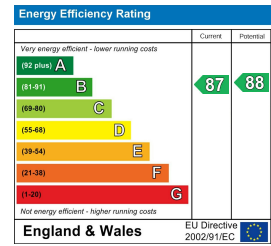
Floor Plan



Area Map



Energy Efficiency Graph



These particulars, whilst believed to be accurate are set out as a general outline only for guidance and do not constitute any part of an offer or contract. Intending purchasers should not rely on them as statements of representation of fact, but must satisfy themselves by inspection or otherwise as to their accuracy. No person in this firm's employment has the authority to make or give any representation or warranty in respect of the property.