



SCAN ME



21 Course Park Crescent, Titchfield Common,  
Fareham, Hampshire, PO14 4DW.

For more information

**01489 570019**  
[www.sbk4homes.com](http://www.sbk4homes.com)

# 21 Course Park Crescent

Titchfield Common, Fareham, PO14 4DW.

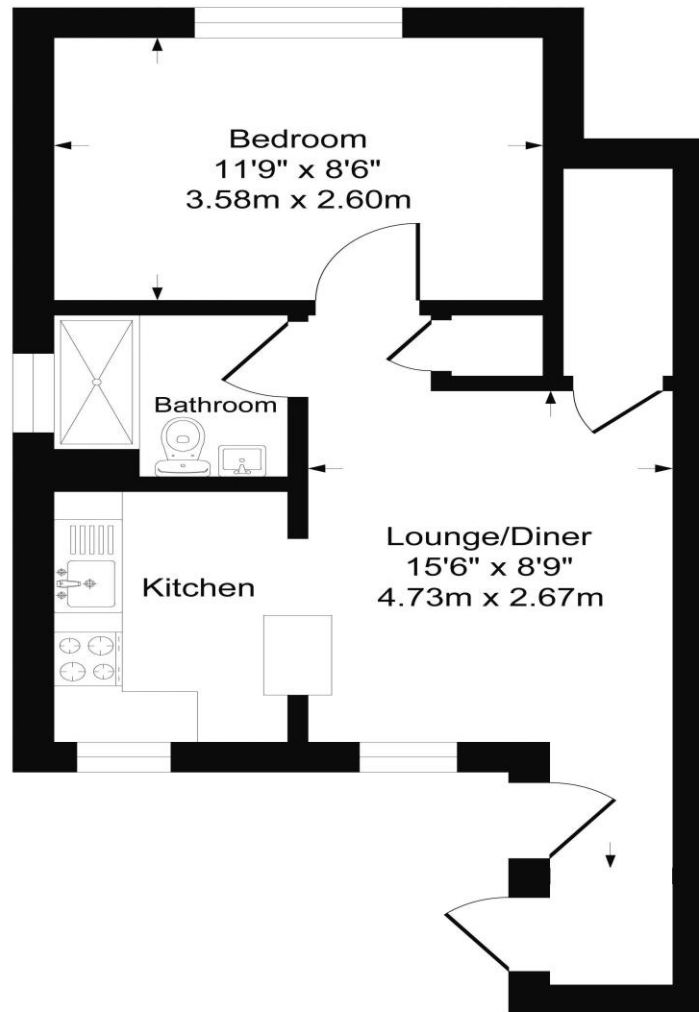
£975 PCM

- Ground Floor Flat
- Completely Refurbished Throughout
- One Double Bedroom
- New Fitted Kitchen
- Shower Room With Good Sized Cubicle
- Tiled Floor Throughout Living Area
- Newly Fitted Electric Heaters
- Double Glazing
- Own Private Garden Area
- Allocated Parking Nearby



21 Course Park Crescent, Titchfield Common, Fareham, Hampshire, PO14 4DW. £975 PCM

**Approximate Gross Internal Area  
350 sq ft - 33 sq m**



Although every attempt has been made to ensure accuracy, all measurements are approximate.  
This floorplan is for illustrative purposes only and not to scale.  
Measured in accordance with RICS Standards.



#### ADDITIONAL INFORMATION

Council Tax Band

Band A which is payable to Fareham Borough Council.

The current charge for this is £1,513.70

Availability Date

The property is available from the beginning/middle of July.

Energy Performance Certificate

The rating for the property is E. To obtain a full report of the EPC please contact SBK.

Parking

The property has one allocated parking space and additional on road parking on a first come, first served basis.



For more information

**01489 570019**

**www.sbk4homes.com**