

# 3 CRANESWATER GATE

SOUTHSEA | HAMPSHIRE | PO4 0NZ



£920,000

Freehold

- Substantial Five Bedroom Home
- Spacious and Welcoming Entrance Hall
- Lounge, Dining Room, Family Room
- Wealth of Original and Period Features
- Contemporary Fitted Kitchen Units
- Master Bedroom With En-suite
- Two Further Family Bathrooms
- Basement with Three Storage Areas







## In Brief

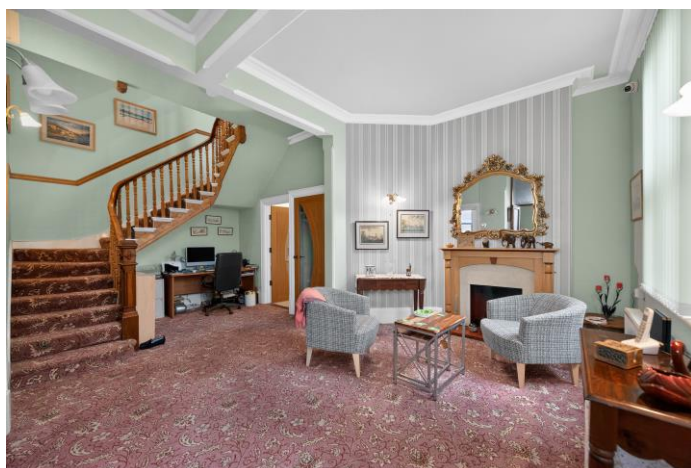
Set in the highly sought-after Craneswater Park area of Southsea, just moments from Canoe Lake and the seafront, this impressive Edwardian semi-detached home offers generous accommodation, beautiful period character and a superb family layout. A large and welcoming entrance hall sets the tone for the space within. The elegant lounge features a striking period fireplace, while the rear of the house opens into a stunning open-plan dining/family room, flooded with natural light and fitted with wide doors that open directly onto the south-facing garden — perfect for modern family living and entertaining. The property offers five bedrooms, including a spacious master with en-suite, complemented by two further family bathrooms. The kitchen provides access to a useful basement area, divided into three separate storage rooms. To the front, the house benefits from off-road parking for two vehicles, a rare advantage in this desirable location. A wonderful opportunity to acquire a substantial and beautifully presented Edwardian home in one of Southsea's most prestigious residential settings.

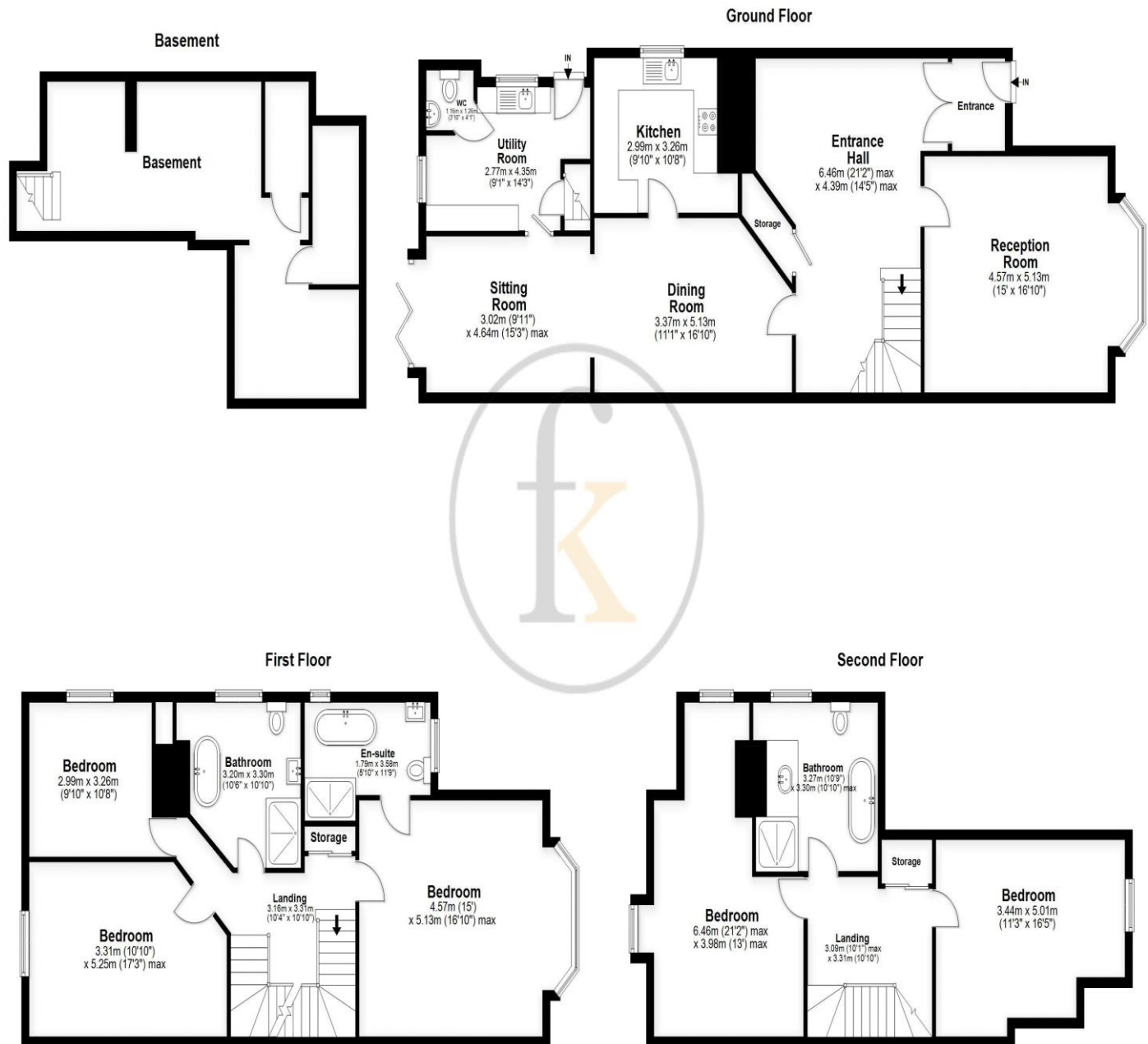




# 3 CRANESWATER GATE

SOUTHSEA | HAMPSHIRE | PO4 0NZ





**Southsea**  
Sales & Lettings  
7/9 Stanley Street,  
Southsea, PO5 2DS  
Tel: 023 9281 5221

**Old Portsmouth & Gunwharf Quays**  
Sales & Lettings  
The Seagull, 13 Broad Street,  
Old Portsmouth, PO1 2JD  
Tel: 023 9281 5221

**Drayton & Out of Town**  
Sales & Lettings  
139 Havant Road,  
Drayton, PO6 2AA  
Tel: 023 9221 0101

**London**  
Sales & Lettings  
Mayfair Office, Cashel House,  
15 Thayer Street, W1U 3JT  
Tel: 0870 112 7099

**Southsea**  
Admin Centre  
12 Marmion Road,  
Southsea, PO5 2BA  
Tel: 023 9282 2300

[www.fryandkent.com](http://www.fryandkent.com)