



The Mill
Loughborough

1 Bed 2nd Floor Apartment • LE11 1FU • £975 pcm • £1,125 Deposit



The Mill, Loughborough

Set in the highest specification development that Loughborough has to offer. This premium, one-bed, second-floor apartment is almost ready for occupation. In the developers own words "The Mill offers a prestigious collection of luxury apartments with residents gym, communal 'hot desk' area and meeting room, parking, daily concierge service. This new 'Waterside Village' offers the perfect live, work and play living experience". Underfloor heating throughout.

Lounge / Diner

A bright living and dining space, open to the kitchen. Exposed brickwork and high ceilings complete the look.

Kitchen

A contemporary kitchen in grey with matching worktop. Hidden away behind the smart cabinets there are all the integrated appliances you'll need including fridge freezer, dual oven, washer-dryer, easy clean hob and a dishwasher. Open plan to the dining and living area.

Bedroom

A contemporary double bedroom with high ceilings and exposed brickwork to complete the look.

Bathroom

This beautiful three piece bathroom comes complete with a, heated towel rail, shaving point and underfloor heating. Classic, brick-bond tiling completes the look.

Parking

Allocated parking for one car within the Waterside Village carpark, with visitor parking available.

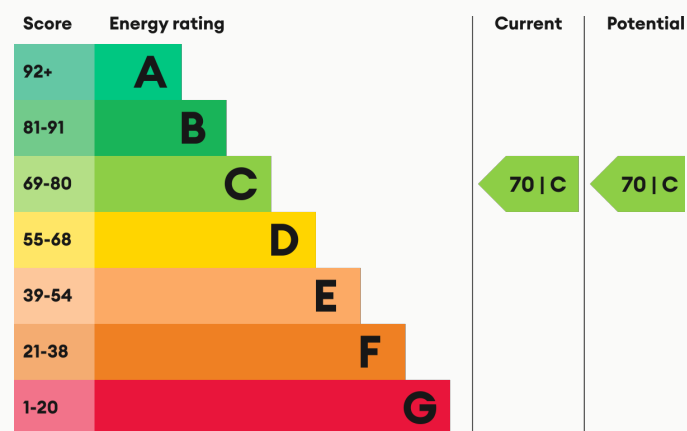
Underfloor Heating

Underfloor heating throughout.

Glazing

Modern, good quality, uPVC double glazing.

Energy Performance



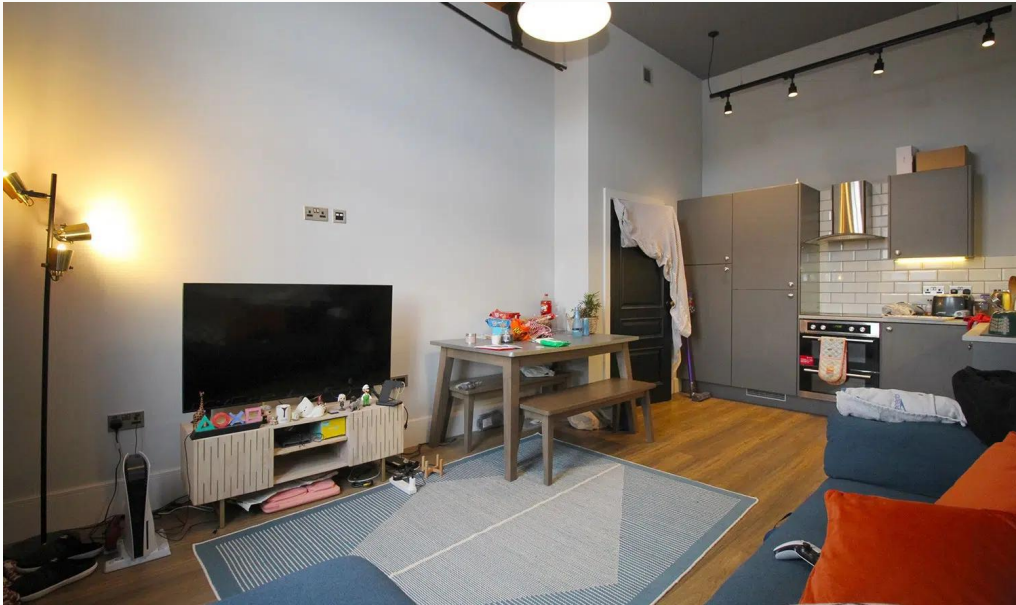
We aim to make our particulars both accurate and reliable. However they are not guaranteed; nor do they form part of an offer or contract. If you require clarification on any points then please contact us, especially if you are traveling some distance to view. All measurements are to widest point.



Lounge / Diner



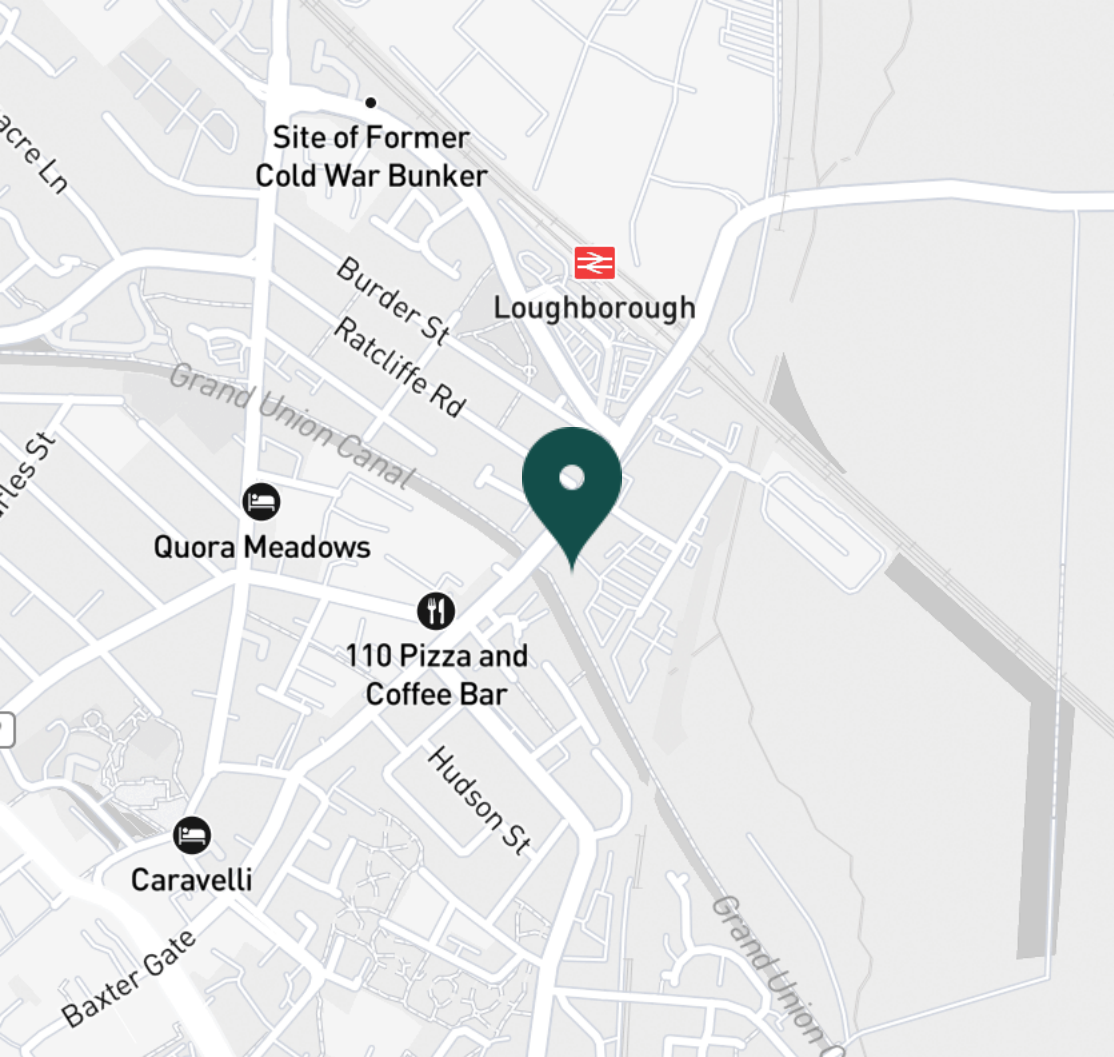
Lounge / Diner



Lounge / Diner



Lounge / Diner



SUPERMARKETS

Tesco Superstore Loughborough	0.9 mi
Marks & Spencer	1.0 mi
Aldi Loughborough	1.0 mi
Lidl Loughborough	1.1 mi
Sainsburys Loughborough	1.2 mi

GYMS

CrossFit Loughborough	0.5 mi
PureGym Loughborough	0.7 mi
Anytime Fitness Loughborough	0.8 mi
Dynamite Gym Ltd	0.9 mi
NPC Performance Centre	1.0 mi

TRAIN STATIONS

Loughborough	0.4 mi
Barrow upon Soar	5.3 mi
Sileby	6.0 mi
Syston	10.3 mi
East Midlands Parkway	10.5 mi

NURSERY SCHOOLS

Cobden Childrens Centre	0.7 mi
Babblebrooke Day Nursery	0.7 mi
Lime Tree Nursery	0.9 mi
Small World Nursery	1.1 mi
Emmanuel PS	1.2 mi

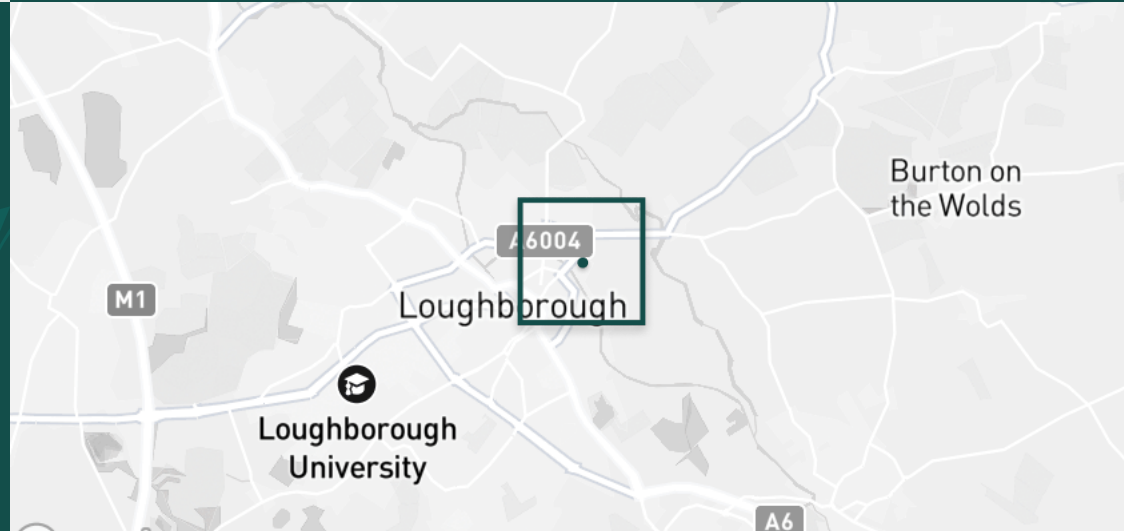
PRIMARY SCHOOLS

Rendell Primary School	0.5 mi
Cobden PS	0.9 mi
Fairfield Preparatory Sch	1.0 mi
St Marys Catholic PS	1.3 mi
Our Lady's Convent Sch	1.4 mi

HIGH SCHOOLS

Limehurst Academy	0.6 mi
Our Lady's Convent Sch	1.4 mi
Loughborough High Sch	1.4 mi
RNIB College Loughborough	1.5 mi
Loughborough Grammar Sch	1.7 mi

Discover
Loughborough



- ✓ Converted Mill
- ✓ Appliances Included
- ✓ Communal Gym
- ✓ Concierge Service
- ✓ Second Floor
- ✓ One Bed Apartment





Bedroom



Bedroom



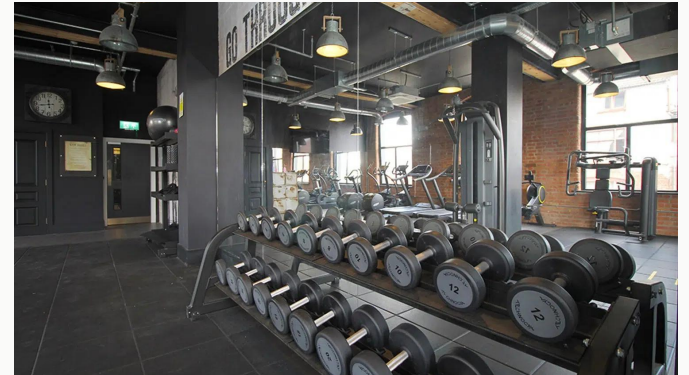
Bedroom



Bathroom



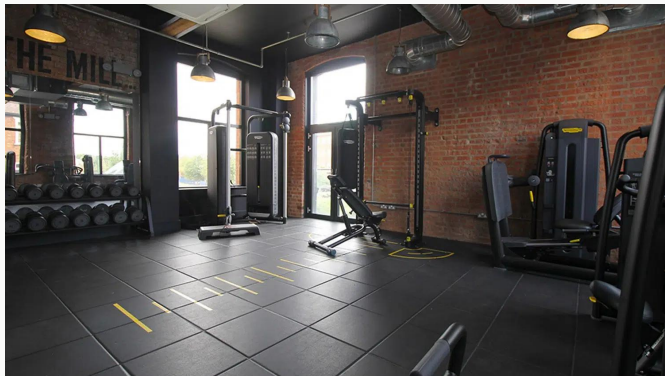
Entrance



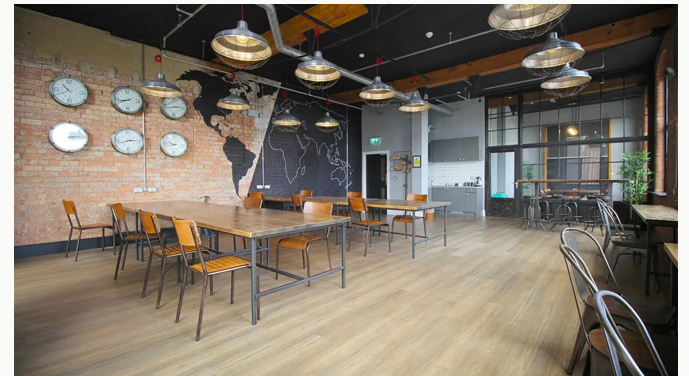
Gym



Gym



Gym



Office Area



Office Area



The Mill

Available
From 26/03/2026

Comes
Unfurnished

Bedrooms
1

Receptions
1

Bathrooms
1

Parking
Allocated

Postcode
LE11 1FU

Rent
£975 pcm

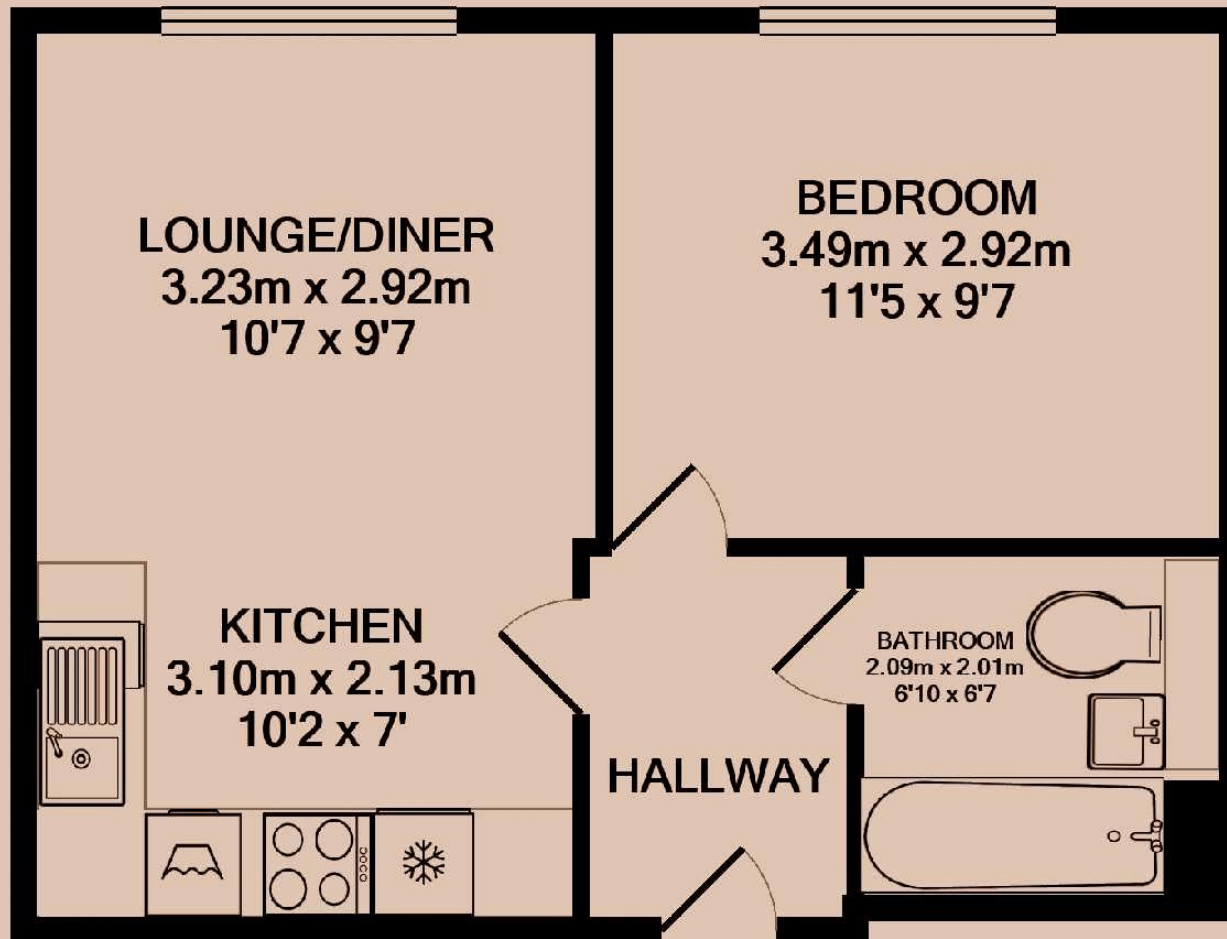
Deposit
£1,125

EPC
70 | C

Council Tax Band
B

ID
#8470

Updated
23/04/2026



Have a property like this? Let's work together.

Design and marketing are at the heart of our approach. With most people now looking for property online, we can get our clients' properties in front of as many people as the most prominent national agents. Where we differ is in the quality of our work. We create stunning digital particulars that highlight the individual attributes of every property we market, with videos and floor plans as standard.



OUR OFFICE
7 Biggin Street
Loughborough, LE11 1UA

CONTACT US
01509 320 320
let@huntleys.net



Huntleys

