



Jordan fishwick

Apt 404 Charcoal 1 Lockgate Square,
£1,425 Per Calendar Month



1 Lockgate Square Salford M5 4YU

£1,425 Per Calendar Month



The Property

Available Start of April. Jordan Fishwick presents this 4th floor FURNISHED two bedroom apartment of the ever popular Middlewood Locks development. Two Double bedrooms with built in wardrobes, fully furnished with extensive storage and high spec integrated appliances in the kitchen. The apartment also features a balcony off the Living room.

Residents of Middlewood Locks benefit from a great canalside community, supermarket and bar, as well as the 10-minute walk into Spinningfields. Close to Regent Road Retail Park, for convenience for gym & retail. No Pets allowed. No Parking. Tax Band C. EPC Rating B. Additional separate Hot Water Charge.


Reposit (Nil Deposit Option) Available on this property.

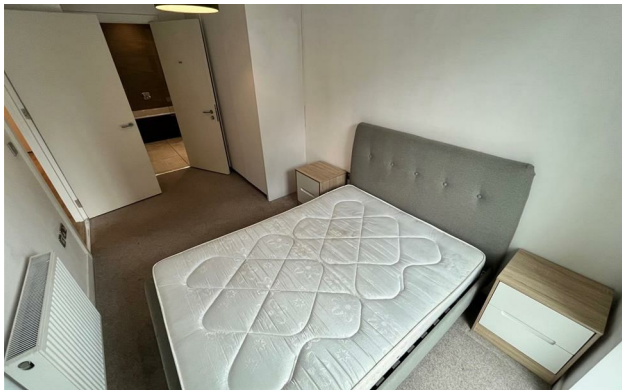
VIDEO/ PHOTO OFFERS NOT ACCEPTED - PLEASE CALL TO BOOK A VIEWING



- Available Start of April.
- 4th Floor Apartment
- Two Double Bedrooms
- Tax Band C
- EPC Rating B
- Balcony
- No Parking
- Close to Retail & supermarkets
- Short walk into the City Centre



Energy Efficiency Rating		
	Current	Potential
Very energy efficient - lower running costs		
(92 plus) A		
(81-91) B	86	86
(69-80) C		
(55-68) D		
(39-54) E		
(21-38) F		
(1-20) G		
Not energy efficient - higher running costs		
England & Wales	EU Directive 2002/91/EC 	





These particulars are believed to be accurate but they are not guaranteed and do not form a contract. Neither Jordan Fishwick nor the vendor or lessor accept any responsibility in respect of these particulars, which are not intended to be statements or representations of fact and any intending purchaser or lessee must satisfy himself by inspection or otherwise as to the correctness of each of the statements contained in these particulars. Any floorplans on this brochure are for illustrative purposes only and are not necessarily to scale.

Offices at: Offices at Chorlton, Didsbury, Disley, Hale, Glossop, Macclesfield, Manchester Deansgate, Manchester Whitworth Street, New Mills, Sale, Wilmslow and Withington