



## Old Ford Road, E3

£2,800 Per calendar month

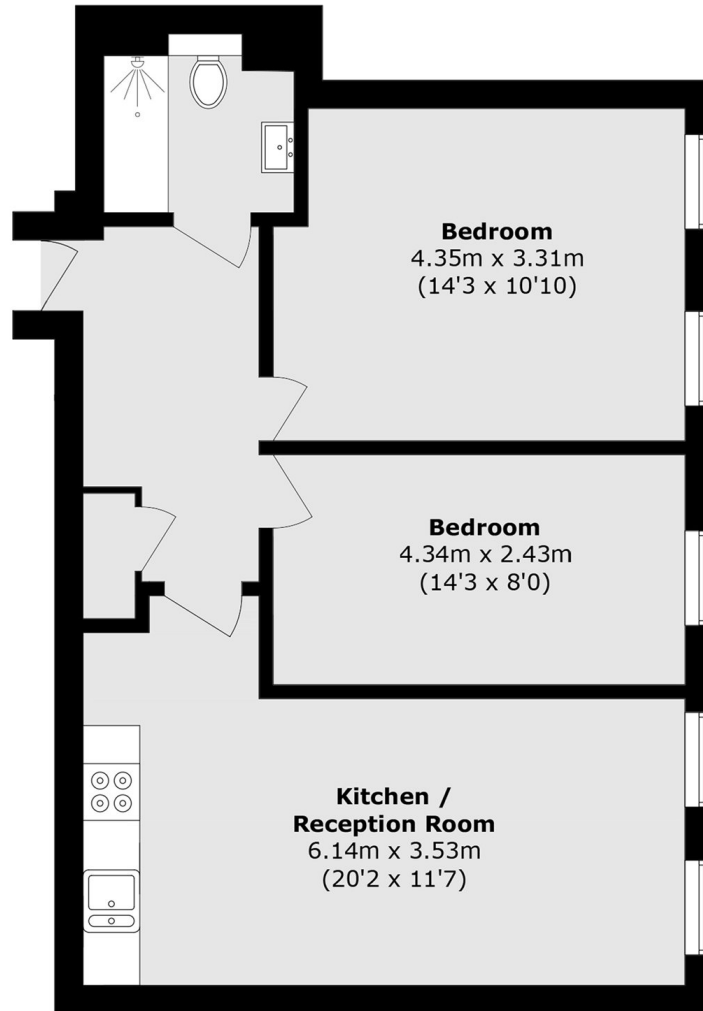
A stunning two double bedroom converted warehouse apartment in the Connaught Works. This second floor apartment has exposed brickwork throughout, open plan living space with wooden flooring throughout.

Amazing location close to Victoria Park, Hertford Union Canal, Victoria Park Village and Roman Road for all local shops, bars and restaurants.

### Features

- Two Double Bedroom
- Open Plan
- Warehouse Conversion
- Wooden Flooring
- Opposite Victoria Park
- Secure Building

Old Ford Road,  
London, E3



Total area (approx.): 60.5 sq. m (651.2 sq. ft)