



Connells

Gorse Rise
Grantham



Property Description

Connells are delighted to bring to the market this three bedroom home. Ideal for families, first-time buyers, or investors alike.

The ground floor comprises a welcoming entrance hall, convenient downstairs WC, a generous lounge providing an excellent space for relaxation and entertaining. To the front of the property is a kitchen/diner, ideal for everyday living.

To the first floor, the property offers three bedrooms. The bedroom one is a spacious double. A family bathroom completes the first-floor accommodation.

Externally, To the rear there is a good size garden.

Early viewing is highly recommended.

This property is in need of modernisation. Excellent investment opportunity offering a well-proportioned three-bedroom property arranged over two floors.

Ground Floor

Entrance Hall

With doors leading to the kitchen / diner, lounge and rear hall. Stairs leading to the first floor, understairs storage cupboard, radiator.

Kitchen / Diner

With double glazed window to the front and a radiator.

Lounge

Double glazed window to the rear, radiator, original floor boards, fire back boiler, gas fire.

Rear Hall

With doors leading to the downstairs W.C, door leading to the rear garden. Storage cupboard.

Downstairs W.C

Wash hand basin and W.C.

First Floor

Landing

With a window to the side, radiator, loft access. Doors leading to the bathroom and three bedrooms.

Bedroom One

Double glazed window to the rear, radiator, floor boards, two storage cupboards.

Bedroom Two

With a window to the rear, floor boards, wood effect decor.

Bedroom Three

Double glazed window to the front, radiator, floor boards.

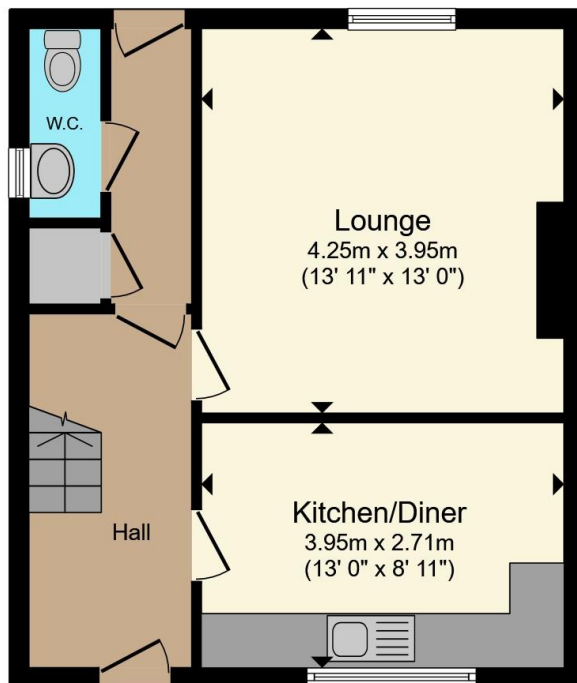
Bathroom

Double glazed window to the front, radiator, bath, wash hand basin, W.C.

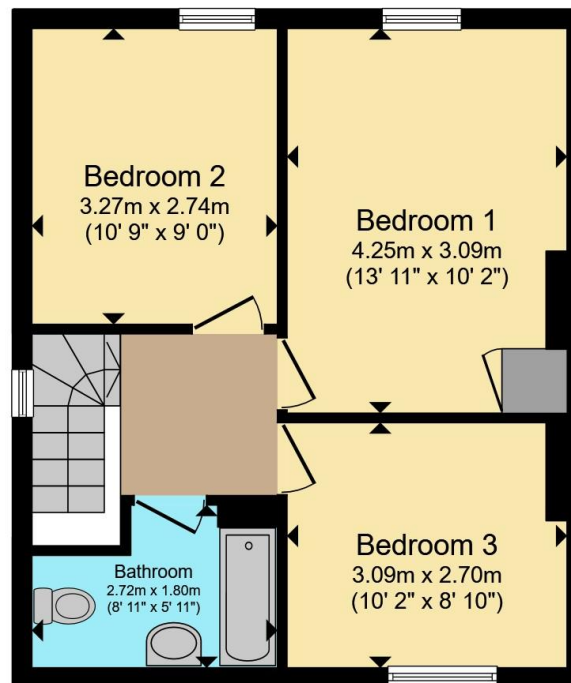








Ground Floor



First Floor

Total floor area 83.3 m² (897 sq.ft.) approx

This floor plan is for illustrative purposes only. It is not drawn to scale. Any measurements, floor areas (including any total floor area), openings and orientation are approximate. No details are guaranteed, they cannot be relied upon for any purpose and they do not form part of any agreement. No liability is taken for any error, omission or misstatement. A party must rely upon its own inspection(s). Powered by www.propertybox.io

Connells

To view this property please contact Connells on

T 01476 590 050
E grantham@connells.co.uk

2 Watergate
 GRANTHAM NG31 6PR

EPC Rating: D Council Tax
 Band: A

Tenure: Freehold

view this property online connells.co.uk/Property/GRM309331



1. MONEY LAUNDERING REGULATIONS Intending purchasers will be asked to produce identification documentation at a later stage and we would ask for your co-operation in order that there will be no delay in agreeing the sale. 2. These particulars do not constitute part or all of an offer or contract. 3. The measurements indicated are supplied for guidance only and as such must be considered incorrect. Potential buyers are advised to recheck measurements before committing to any expense. 4. We have not tested any apparatus, equipment, fixtures, fittings or services and it is in the buyers interest to check the working condition of any appliances.

Connells Residential is registered in England and Wales under company number 1489613, Registered Office is Cumbria House, 16-20 Hockliffe Street, Leighton Buzzard, Bedfordshire, LU7 1GN. VAT Registration Number is 500 2481 05.

See all our properties at www.connells.co.uk | www.rightmove.co.uk | www.zoopla.co.uk

Property Ref: GRM309331 - 0002