



St. Peters Court | | LS29 0RL

Asking price £599,000

TW TRANMER
WHITE
Trusted Estate Agents

TW
TRANMER
WHITE
TranmerWhite.co.uk
01943 661141
FOR SALE

23 St. Peters Court |
Addingham | LS29 0RL
Asking price £599,000

The definition of a 'turn key' home, this immaculately presented four bedroomed, two bathroom detached property stands within a generous plot that features a South West facing garden, off-street parking for several vehicles and a sizeable garage.

Standing at the top of a peaceful cul de sac, this ideal family home enjoys a beautiful outlook across Addingham and towards Beamsley Beacon. The ground floor features an abundance of living space with three reception rooms plus an inviting reception hall and cloakroom. A particularly useful feature is the fully boarded loft which includes radiators and two velux windows, therefore creating an excellent home working space.

- Three Reception Rooms
- Off-Street Parking For Four Cars
- Sizeable Garage
- Beautiful Private Rear Garden
- Cul De Sac Position
- Beautifully Appointed Throughout

With gas central heating, the accommodation comprises:

Ground Floor

Reception Hall

16'0 x 5'10 (4.88m x 1.78m)

An inviting reception hall including a recessed cloaks cupboard plus an understairs store cupboard.



Occupying a particularly good plot, the property features off-street parking for up to four cars as well as a beautiful, private rear garden.



Sitting Room

13'5 x 12'7 (4.09m x 3.84m)

Featuring a wood burning stove on stone hearth plus a bowed window offering a far reaching view.

Living/Dining Room

12'0 x 11'0 (3.66m x 3.35m)

With a high quality wood floor and a bowed window. This room connects to both the reception hall and the dining kitchen.

Dining Kitchen

30'9 x 8'10 (9.37m x 2.69m)

A very well-appointed dining kitchen comprises a good range of base and wall units with coordinating work surfaces and concealed lighting. Integrated appliances include an oven, microwave, four ring ceramic hob with hood over, dishwasher and a fridge/freezer. There is ample space for a dining table and chairs plus space to create an additional living area. French doors lead out to the rear garden.

Inner Hall

Connecting the front and rear of the property as well as providing internal access to the garage.

Cloakroom

7'1 x 3'7 (2.16m x 1.09m)

With a hand wash basin plus w.c.

First Floor

Principal Bedroom

15'1 x 10'11 (4.60m x 3.33m)

A spacious double bedroom enjoying a lovely dual aspect that offers a stunning outlook over the village. Also includes a walk-in wardrobe with hanging rails, shelving and a radiator.



En Suite

9'0 x 5'9 (2.74m x 1.75m)

With underfloor heating and comprising a walk-in shower with glass screen, hand wash basin within vanity unit, two heated towel rails and a w.c.

Bedroom

11'8 x 10'9 (plus entry recess) (3.56m x 3.28m (plus entry recess))

A second double bedroom, including a recessed wardrobe and enjoying a view of Beamsley Beacon.

Bedroom

10'9 (plus entry recess) x 10'4 (3.28m (plus entry recess) x 3.15m)

A further double bedroom, featuring a recessed wardrobe, recessed store cupboard and an outlook over the rear garden plus fields beyond.

Bedroom

8'8 x 7'9 (2.64m x 2.36m)

With a fitted store cupboard and again benefitting from a beautiful view across the village.

Bathroom

7'4 x 6'0 (2.24m x 1.83m)

Smartly presented and including a bath with shower over plus glass screen, hand wash basin within vanity unit, heated towel rail and a w.c.

Landing

With a loft hatch leading to:



Loft Room

Accessed via a drop-down ladder, the loft is fully boarded and carpeted with two velux windows, creating a useful home office space. A door leads through to a useful boarded storage area.

Outside

Driveway

A tarmacadam driveway provides ample off-street parking for four vehicles.

Garage

17'4 x 12'8 (5.28m x 3.86m)

Accessed either internally via the inner hall, via an electric roller door to the front or a single door to the rear. The garage includes light, power and water with a Belfast sink plus space for additional appliances.

Garden

A standout feature of this superb home is the South West facing garden, which includes a decked seating area as well as a lower seating area. Both of which overlook a beautifully maintained lawned area that features mature shrubs and flower beds, bordered by a dry stone wall.



Please Note

The extent of the property and its boundaries are subject to verification by inspection of the title deeds. The measurements in these particulars are approximate and have been provided for guidance purposes only. The fixtures, fittings and appliances have not been tested and therefore no guarantee can be given that they are in working order. The internal photographs used in these particulars are reproduced for general information and it cannot be inferred that any item is included in the sale.

Mobile Signal/Coverage

The mobile signal/coverage in this area can be verified via the following link:
<https://checker.ofcom.org.uk/en-gb/mobile-coverage>

Offer Acceptance & AML Regulations

In accordance with the Money Laundering, Terrorist Financing and Transfer of Funds (Information on the Payer) Regulations 2017, and to comply with the expanded Money Laundering Regulations, we are required to obtain proof of how the property purchase will be financed, as well as valid identification from all prospective buyers.

Buyers are kindly asked to provide this information promptly to avoid any delay in agreeing the sale. The cost for these checks is £30 per named buyer (inclusive of VAT), payable to the firm administering the money laundering ID checks, Movebutler. Please note that the property will not be marked as "sold subject to contract" until appropriate identification has been provided and all AML checks have been fully completed.



Nestled at the top of a cul de sac, 23 St Peters Court manages to feel peaceful and secluded while still being within walking distance of the village centre.



©2026 Airbus, Infoterra Ltd & Bluesky, Maxar Technologies



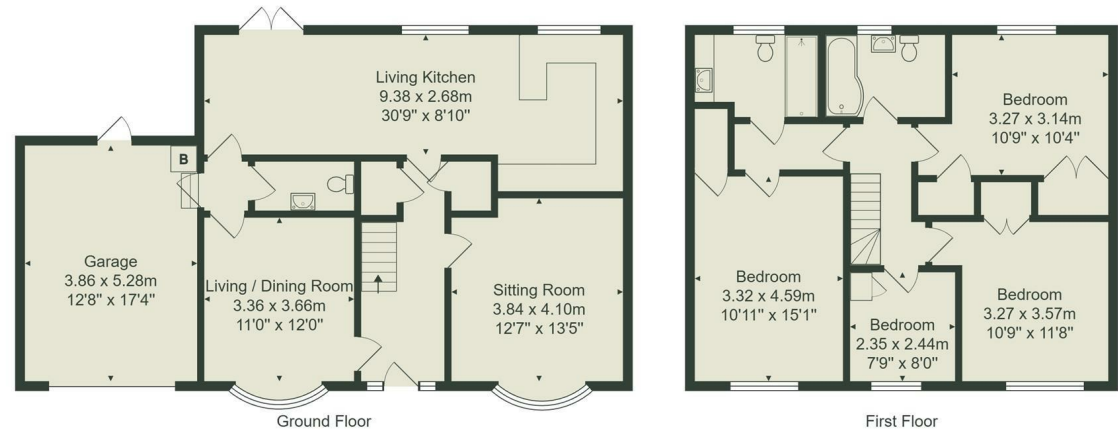
Google

Map data ©2026



Google

Map data ©2026 Google



Total Area: 145.8 m² ... 1570 ft² (excluding garage)
 All measurements are approximate and for display purposes only.
 No liability is accepted by either the agency or Box Property Solutions Ltd as to the exact measurements of the rooms.
 Box Property Solutions Ltd retains the copyright on this plan and allows agents to use it with agreed permission.

Energy Efficiency Rating		Current	Potential
Very energy efficient - lower running costs			
(92 plus) A			
(81-91) B			
(69-80) C			
(55-68) D			
(39-54) E			
(21-38) F			
(1-20) G			
Not energy efficient - higher running costs			
England & Wales		85	70
EU Directive 2002/91/EC			

139 Bolling Road
 Ben Rhydding
 Ilkley
 West Yorkshire
 LS29 8PN
 01943 661141
 ilkley@tranmerwhite.co.uk
<https://www.tranmerwhite.co.uk/>