



21 Owston Road, Annesley, NG15 0DW  
£180,000





## 21 Owston Road

Annesley, Nottingham

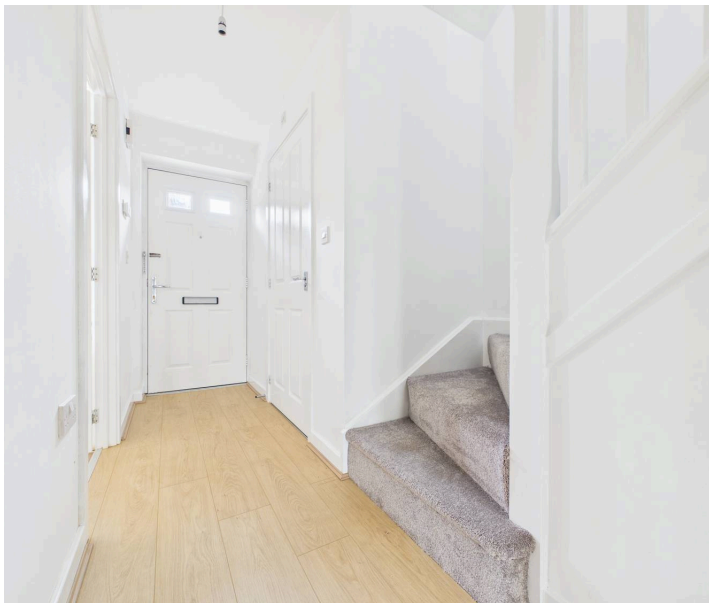
Modern 2-bed townhouse with no chain, lounge, conservatory, 2 double bedrooms, modern bathroom, rear garden, parking, gas central heating, double glazing, close to amenities and transport.

Council Tax band: A

Tenure: Freehold

EPC Energy Efficiency Rating: C

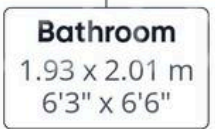
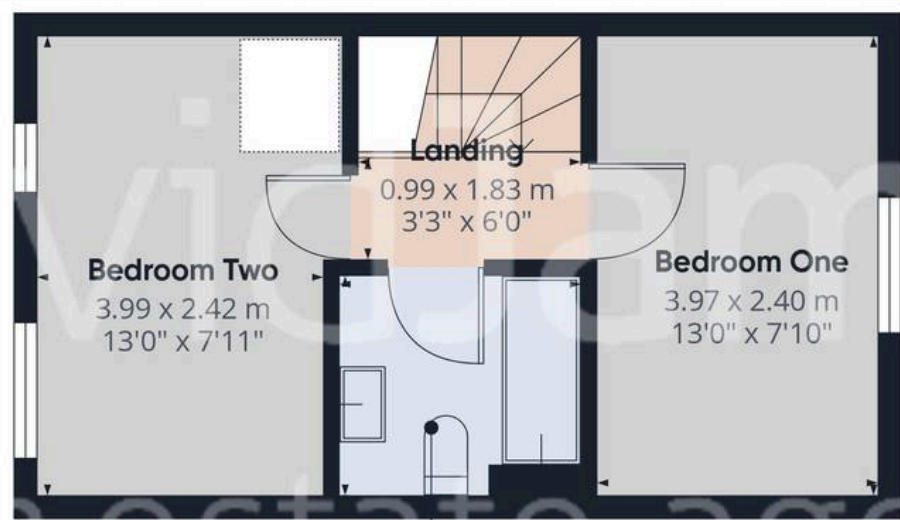
- Modern mid townhouse sold with no upward chain
- Newly decorated with new floor coverings throughout
- Two double bedrooms
- Entrance hall and adjoining ground floor Wc, both with laminate flooring
- Lounge with laminate flooring, storage cupboard and French doors to the conservatory
- UPVC double glazed conservatory with laminate flooring and French doors to the rear garden
- First floor bathroom/Wc with white suite and shower off mixer taps
- Gas central heating, UPVC double glazing
- Enclosed rear garden with paved patio area
- Single garage and parking space provide off road parking







Floor 0



Floor 1



**Approximate total area<sup>(1)</sup>**  
60.4 m<sup>2</sup>  
649 ft<sup>2</sup>

(1) Excluding balconies and terraces

Calculations reference the RICS IPMS 3C standard. Measurements are approximate and not to scale. This floor plan is intended for illustration only.

GIRAFFE360



## David James Estate Agents

43 Forest Street, Sutton-in-Ashfield - NG17 1DA

01623 554084 • [sutton@david-james.com](mailto:sutton@david-james.com) • [www.david-james.com](http://www.david-james.com)

These particulars are produced in good faith and are set out as a general guide only. Measurements are approximate and floor plans are for illustrative purposes only. Services have not been tested. We have established professional relationships with third-party suppliers for the provision of services to Clients, details of which can be found on the property listing page on our website.