



Heathlands Close, TW16

£625,000

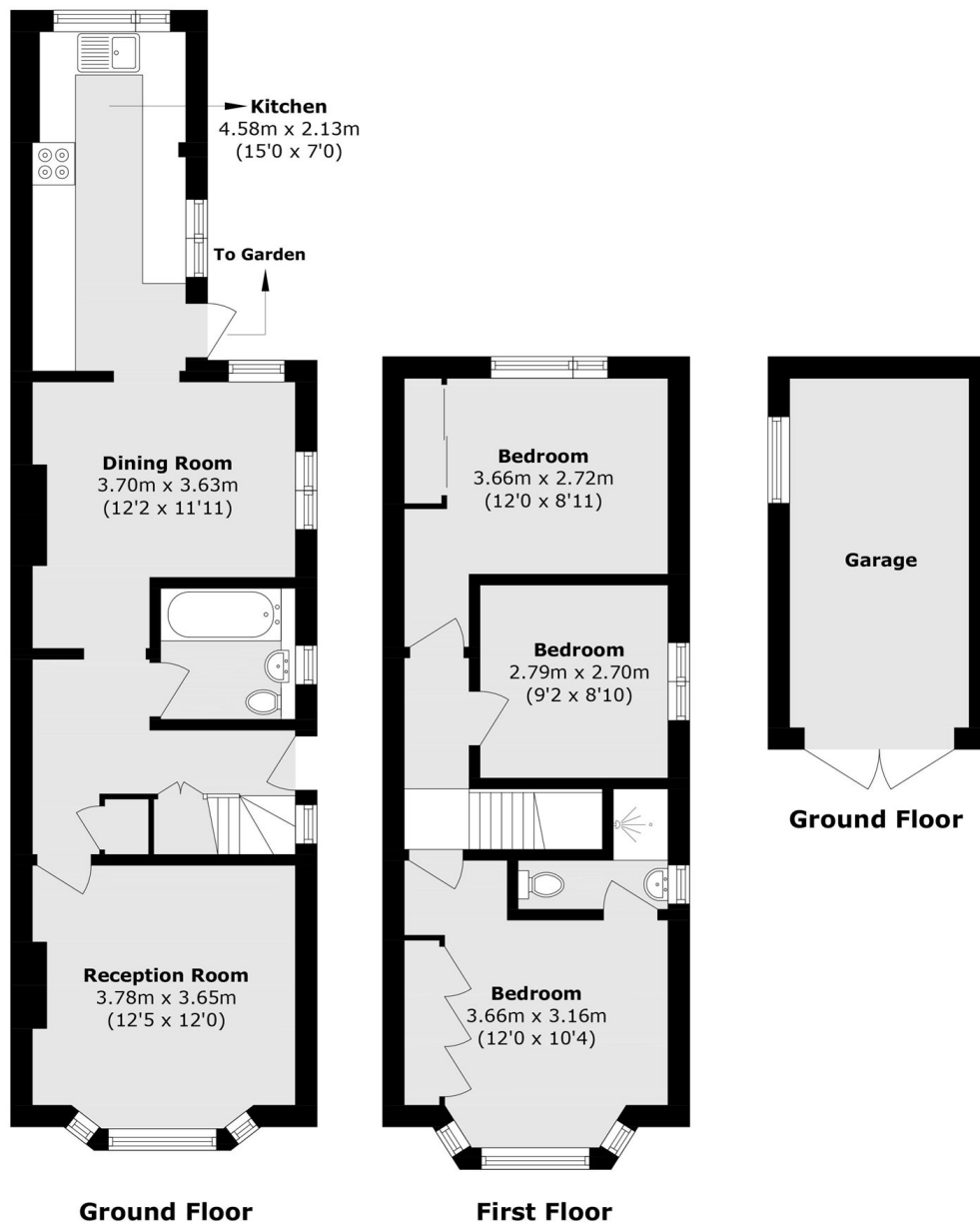
A three bedroom, two reception room and two bathroom house with a stunning landscaped rear garden. This light and spacious family home has the added bonus of off-street parking and a garage.

Heathlands Close is a wonderful location, this quiet cul-de-sac is tucked away off Green Street. Everything Lower Sunbury has to offer is close by including Sunbury Park, the River Thames and Sunbury Station which provides a direct service into Waterloo.

Features

- Semi-Detached
- Three Bedrooms
- Two Reception Rooms
- Landscaped Rear Garden
- Off-Street Parking
- Garage

Heathlands Close, Sunbury-On-Thames, TW16



Total area (approx): 85.8 sq. m (923.5 sq. ft)
Garage area (approx): 12.0 sq. m (129.1 sq. ft)