



## BEECHFIELD THE TERRACE

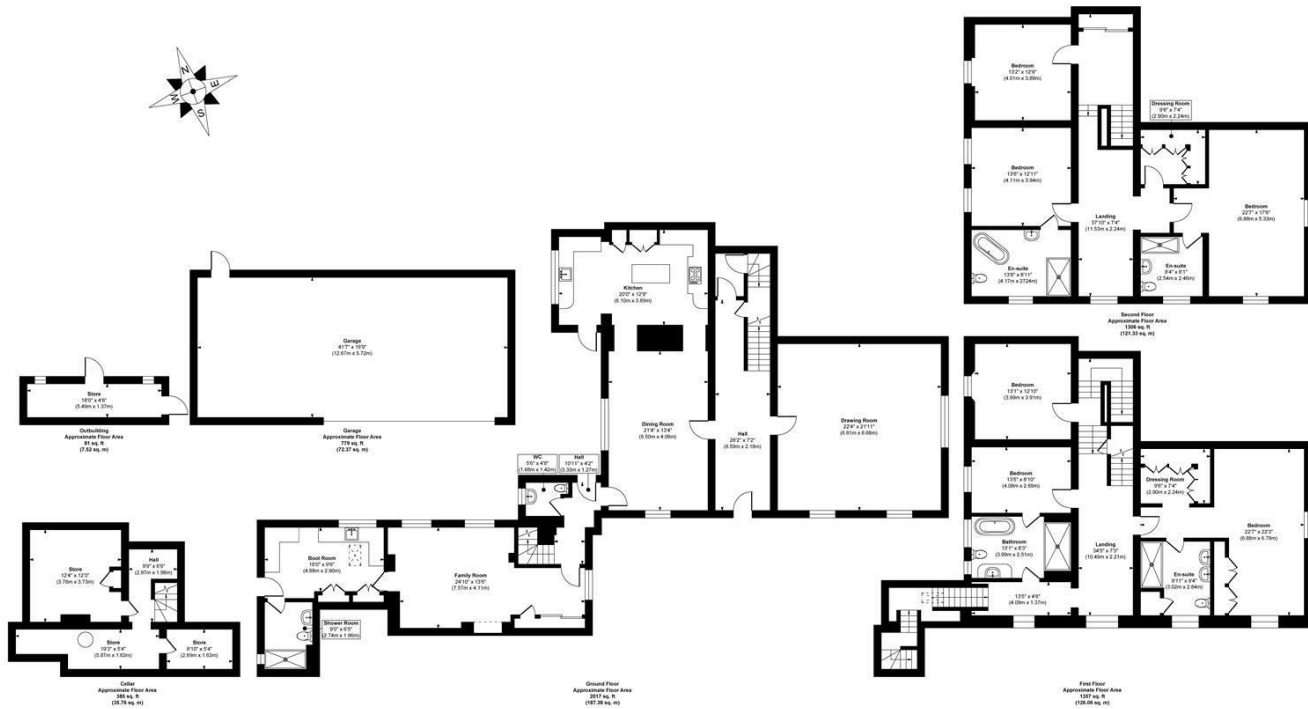
WETHERBY, LS23 6AH

£6,250 PER MONTH

The Terrace is an exceptional Grade II listed Georgian residence set within an exclusive and private development in the heart of Boston Spa. Offering six bedrooms and elegant, high-specification living throughout, this beautifully refurbished home combines period grandeur with modern luxury. Residents benefit from stunning communal grounds, private tennis courts and a distinguished sense of community, while the property itself features a landscaped walled garden, and extensive gated parking—creating a rare opportunity to enjoy refined village living at its finest.

MONROE

SELLERS OF THE FINEST HOMES



Approx. Gross Internal Floor Area 5925 sq. ft / 550.42 sq. m (Including Garage & Outbuilding)

Illustration for identification purposes only, measurements are approximate, not to scale.

Copyright © Show Home.



Energy Efficiency Rating		Current	Potential
Very energy efficient - lower running costs			
(92 plus) A			
(81-91) B			
(69-80) C			
(55-68) D		70	80
(39-54) E			
(21-38) F			
(1-20) G			
Not energy efficient - higher running costs			
England & Wales		EU Directive 2002/91/EC	

Agents Note: Whilst every care has been taken to prepare these particulars, they are for guidance purposes only. All measurements are approximate and are for general guidance purposes only and whilst every care has been taken to ensure their accuracy, they should not be relied upon and potential buyers/tenants are advised to recheck the measurements

Monroe Lettings and Property Management  
 Whitehall Road  
 Leeds  
 LS12 1FJ

0113 350 0866  
 hello@monroelettings.com  
 www.monroelettings.com

MONROE

SELLERS OF THE FINEST HOMES