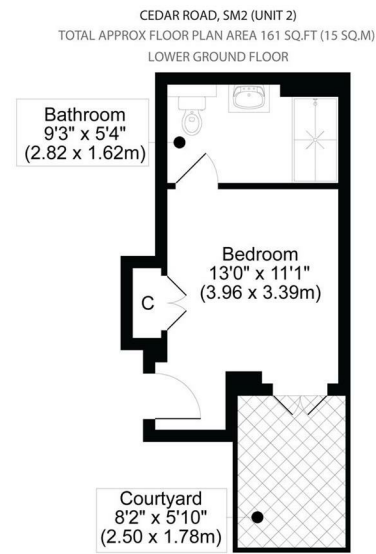




## Floor Plan



All measurements, walls, doors, windows, fittings and their appliances, their size and locations are shown conventionally and are approximate only and cannot be regarded as being a representation either by the seller or his agent.

optima  
optimedia.co.uk

For illustration purposes only



All dimensions and measurements are approximate and for guidance only.

### *Just Centro's Opinion...*

ROOM TO RENT WITH PRIVATE ENSUITE AND COURTYARD - SINGLE OCCUPANT ONLY

**\*\*DEPOSIT FREE OPTION AVAILABLE\*\***

A stunning room to rent in this nearly new development, offering modern, comfortable living in a beautifully designed building.

Set within an attractive development of just eight flats arranged over three floors, this lower ground floor room benefits from its own private en-suite shower room and direct access to a private courtyard area.

Residents also have access to a spacious, fully equipped shared kitchen on the lower ground floor, featuring a breakfast bar, two ovens, two hobs, two fridge freezers, a dishwasher, washing machine, and tumble dryer—perfect for both cooking and socialising.

Ideally located within easy walking distance of National Rail Sutton station and Sutton High Street, the property is perfectly positioned for commuters and

## Additional Photos

