



Asking Price Of £875,000

Thatcher Heights,
Torquay, TQ1 2PA

Set within an exclusive gated coastal community, this exceptional four-bedroom detached residence offers a rare blend of privacy, luxury, and breathtaking natural beauty. Positioned to capture uninterrupted views across the sea toward the iconic Thatcher's Rock, the property delivers a truly elevated lifestyle by the water. The home is thoughtfully designed with spacious, light-filled interiors that seamlessly connect to the surrounding coastal landscape. A generous open-plan living and dining area provides the perfect setting for both relaxed family living and elegant entertaining, while large windows and terraces frame the ever-changing sea views. Upstairs, four well-proportioned bedrooms include a refined principal suite, offering a peaceful retreat with stunning outlooks. High-quality finishes and attention to detail are evident throughout, creating a home that feels both sophisticated and welcoming. Externally, the property benefits from private parking and landscaped grounds, all within the security and tranquillity of this sought-after gated enclave. With direct access to coastal walks and the calming rhythm of the sea just moments away, this is a rare opportunity to enjoy luxury coastal living at its finest.



Door into hallway.

CLOAKROOM One window to front, low level W/C

LOUNGE – (Underfloor heating) Bay window to front, doors leading out to large balcony with uninterrupted sea views to Thatcher’s Rock, window to back

KITCHEN – underfloor heating. A large spacious unit with high gloss kitchen, ample drawers and cupboards under and over, integrated oven and grill, five burner hob, floor to ceiling fridge, floor to ceiling freezer, integrated dishwasher, window to side and sliding doors to back.

MASTER BEDROOM A spacious bedroom with sliding doors out to balcony, breathtaking sea views to Thatcher’s Rock, two built in wardrobes and radiator.

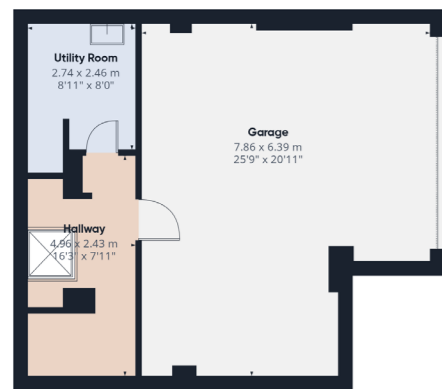
ENSUITE Corner shower cubicle, wash basin with vanity unit, low level WC, obscure window to side and radiator.

BEDROOM 2 A double bedroom with window to back and radiator.

BEDROOM 3 Another double bedroom, window to back and radiator.

BEDROOM 4 A single bedroom with radiator and window to front.

OUTSIDE Two large balconies, space at back, double garage and parking for two cars.



Floor 0



Floor 1

Approximate total area¹⁾

180.3 m²
 1940 ft²

Balconies and terraces

8 m²
 86 ft²

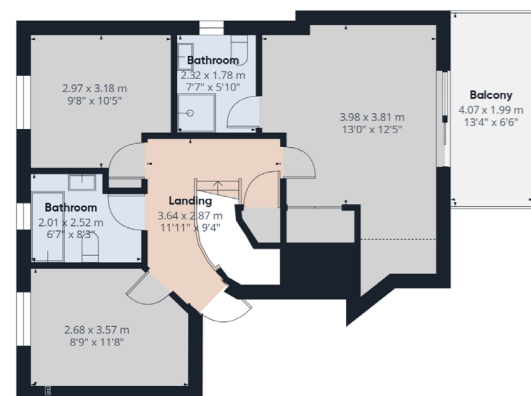
Reduced headroom

1.8 m²
 19 ft²

(1) Excluding balconies and terrace

Reduced headroom
 ----- Below 1.5 m/5 ft

Calculations reference the RICS IPM 3-C standard. Measurements are approximate and not to scale. This floor plan is intended for illustration



Address 'Thatcher Heights, Torquay, TQ1 2PA'

Tenure 'Freehold'

Council Tax Band 'G'

EPC Rating '63 | D'

Taylor's Estate Agents
 256 Torquay Road
 Paignton
 TQ3 2EZ