



For Sale £725,000



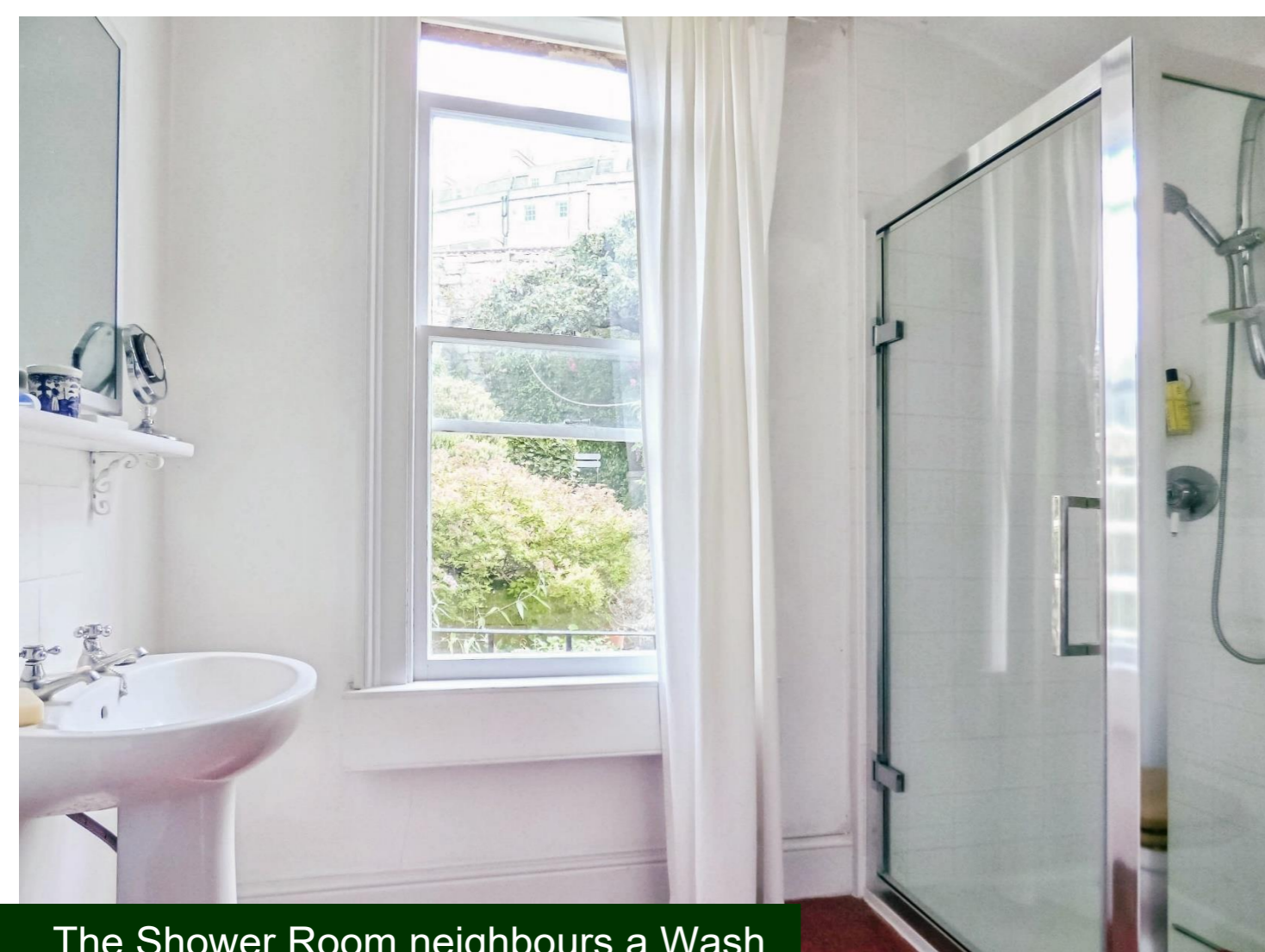
Gordon Road, Widcombe, Bath BA2 4NH

Centrally located three-storey Victorian townhouse in a quiet little street.

3 Beds | 2 Recepts | Gas CH | Period features throughout – fireplaces in principal rooms



Phone: 01225 443322 | Email: property@wildandlye.com



The Shower Room neighbours a Wash Room which is a clever use of space



Elegantly proportioned

Ground and first floor rooms have a bay window and the house has an attractive view of the city from its slightly elevated position near the top of the road

Location

Gordon Road is less than a ten minute walk into the city centre and about the same to Bath Spa Railway Station. Widcombe also has its own parade of shops which is an eclectic mix of amenities, businesses and eateries - connected to Southgate by a footbridge over the river.

Residents' parking

Zone 03. A first permit is £100 per year, with a second permit at £160 per year. Visitor Parking Permits cost £10 per 100 hours of parking.

Tenure

Freehold

Council Tax

Band E

Arrange a viewing

01225 443322

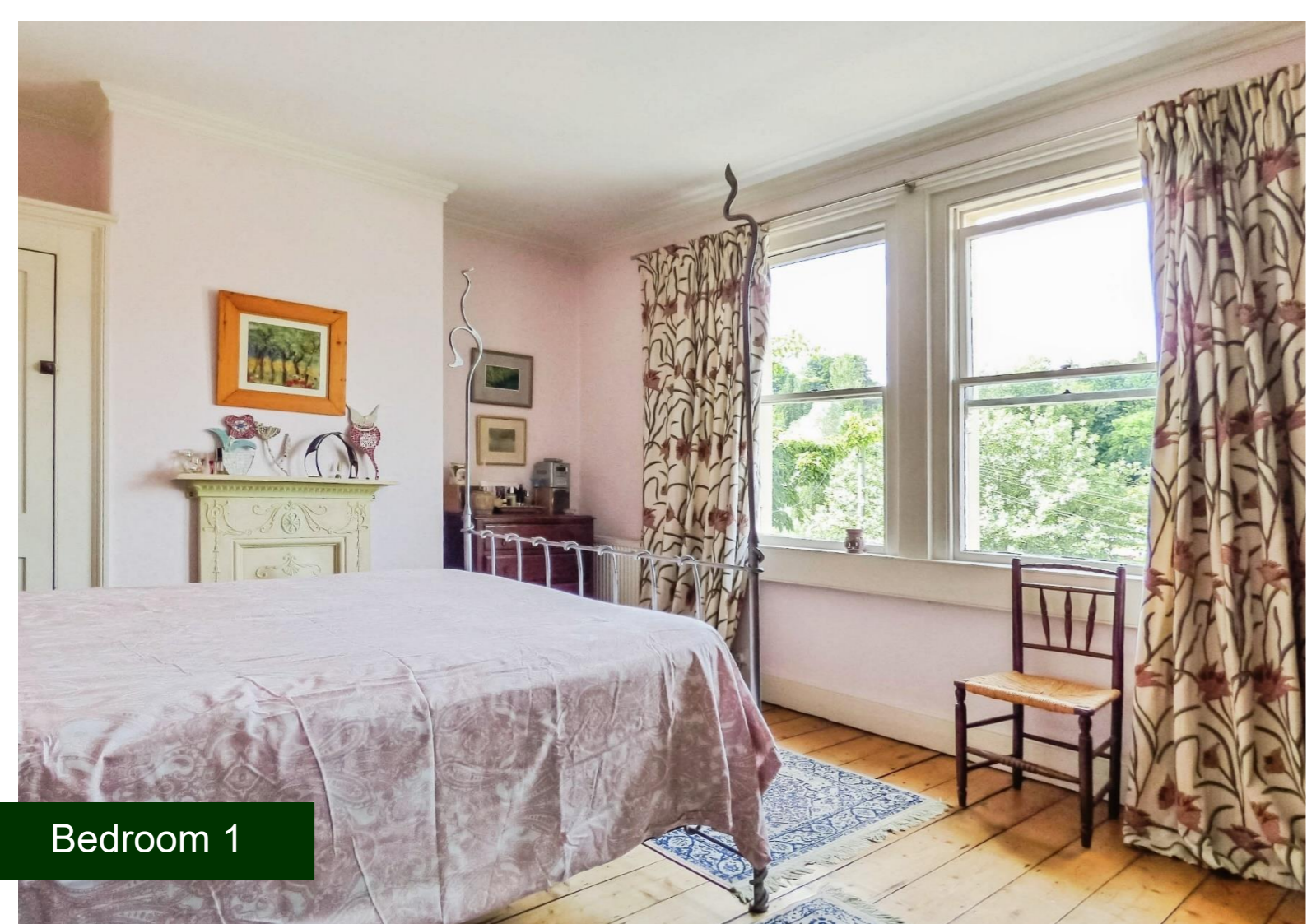
www.wildandlye.com

Important Notice 1. Particulars: These particulars are not an offer or contract, nor part of one. You should not rely on statements by Wild & Lye in the particulars or by word of mouth or in writing ("information") as being factually accurate about the property, its condition or its value. Neither Wild & Lye nor any joint agent has any authority to make any representations about the property, and accordingly any information given is entirely without responsibility on the part of the agents, seller(s) or lessor(s). **2. Photos etc:** The photographs show only certain parts of the property as they appeared at the time they were taken. Areas, measurements and distances given are approximate only. **3. Regulations etc:** Any reference to alterations to, or use of, any part of the property does not mean that any necessary planning, building regulations or other consent has been obtained. A buyer or lessee must find out by inspection or in other ways that these matters have been properly dealt with and that all information is correct.

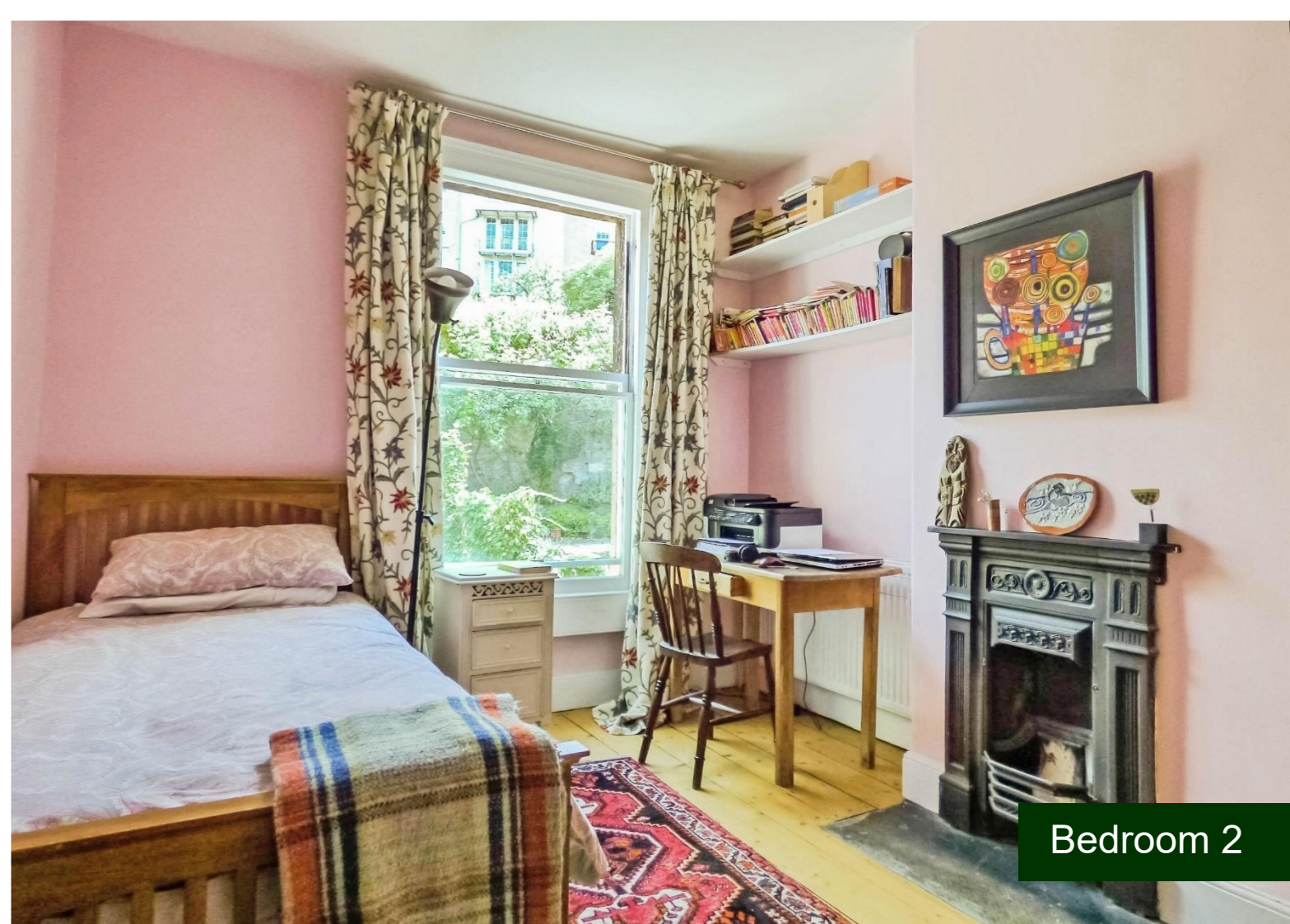


Total floor area 103.0 sq. m. (1,109 sq. ft.) approx

This Floor Plan is for illustration purposes only and may not be representative of the property. The position and size of doors, windows and other features are approximate. Unauthorized reproduction prohibited. © PropertyBOX



Bedroom 1



Bedroom 2



Study/Bedroom 3



Rear garden



Sitting Room