



Shepherds Bush Road, W6

£320,000

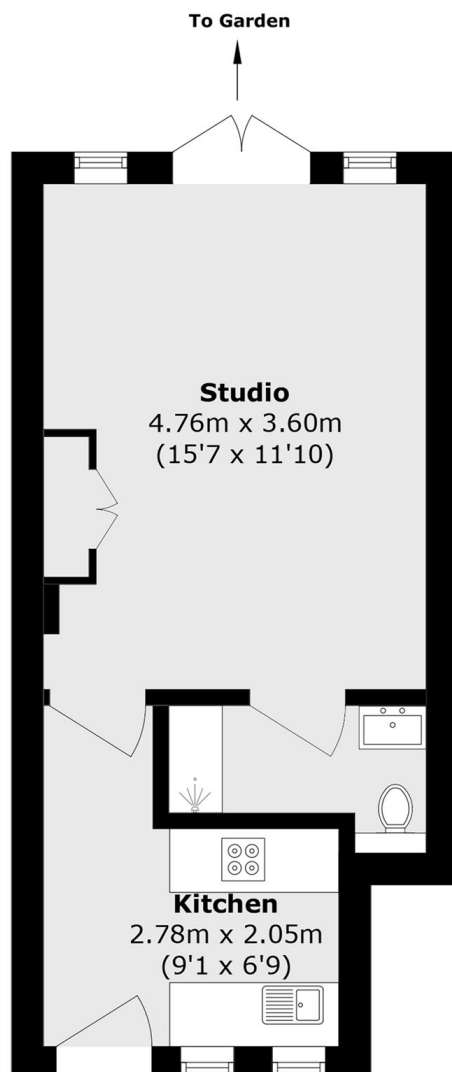
An elegant studio apartment set within a striking Art Deco building, finished to a high standard throughout. The property features original parquet flooring, a separate bespoke kitchen, and access to a sunny south-facing patio and communal gardens, offering a peaceful setting in the heart of W6.

The Grampians is a sought after Art Deco block located moments away from the local amenities of Westfield Shopping Centre and with easy access into Central London. The green space of Holland Park is nearby.

Features

- Studio Apartment
- Art Deco Block
- Separate Kitchen
- Communal Heating and Water
- Outside Space
- Westfields Shopping Centre

Shepherds Bush Road, London, W6



Total area (approx.): 27.7 sq. m (298.1 sq. ft)