

OVER 60?

Secure this property
for up to **59% less!**



Price

£575,000

Freehold

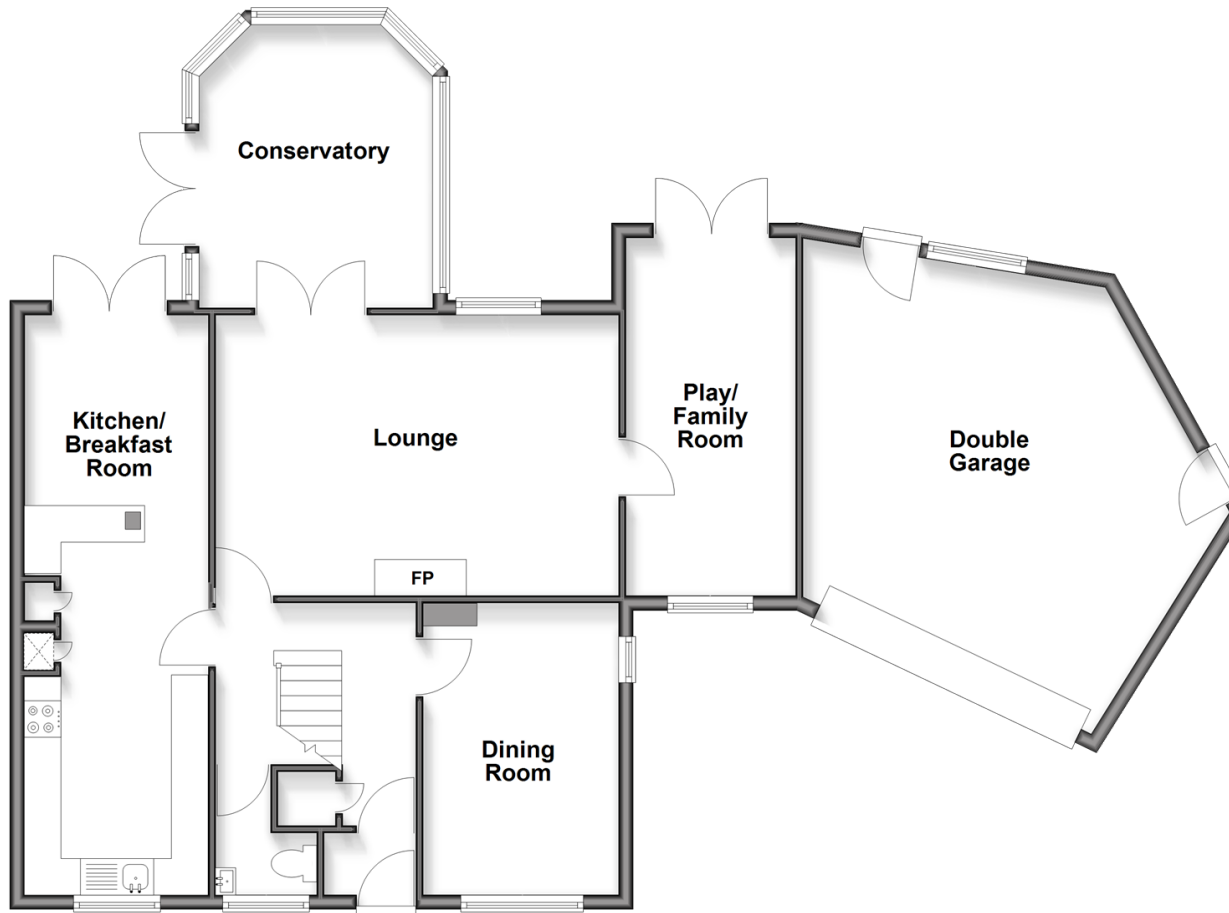
4x  2x  4x 

Heron Close, Lower Halstow,
Sittingbourne, Kent, ME9

Wards
Helping you move forwards

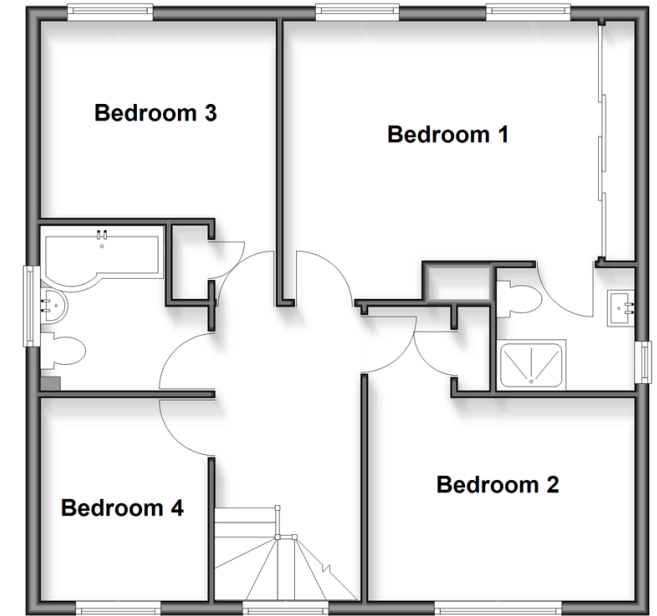
Ground Floor

Approx. 116.7 sq. metres (1255.8 sq. feet)



First Floor

Approx. 64.4 sq. metres (693.2 sq. feet)



Accommodation

GROUND FLOOR

Porch
Entrance Hall
Downstairs Cloakroom
Dining Room : 13'4 x 8'9 (4.07m x 2.67m)
Kitchen/Breakfast Room : 25'4 x 7'9 (7.73m x 2.36m)
Lounge : 18'1 x 11'7 (5.52m x 3.53m)
Conservatory : 12'4 x 8'6 (3.76m x 2.59m)
Play/Family Room : 16'2 x 7'7 (4.93m x 2.31m)

FIRST FLOOR

Landing
Bedroom 1 : 13'7 x 11'8 (4.14m x 3.56m)
En-Suite Shower Room
Bedroom 2 : 12'0 x 9'2 (3.66m x 2.80m)
Bedroom 3 : 11'0 x 8'1 (3.36m x 2.47m)
Bedroom 4 : 9'2 x 8'0 (2.80m x 2.44m)
Bathroom : 8'0 x 7'5 (2.44m x 2.26m)

OUTSIDE

Front Garden
Rear Garden
Double Garage: 27'1 x 16'8 (8.26m x 5.08m)
Driveway



Main features

- An attractive and extended property that would make a fantastic long term family home
- Spacious 18ft lounge with feature fireplace
- Impressive and modern 25ft kitchen/breakfast room
- Additional play/family room for the children
- Generous private rear garden
- Sought after village location
- No forward chain



Nearest Schools

Primary Schools: Lower Halstow Primary, Holywell Primary, Newington C of E Primary
Secondary Schools: Leigh Academy Rainham, Fulston Manor School, Rainham School for Girls, The Howard School



Transport Information

Train Stations: Newington 2.6 miles, Rainham 3.4 miles, Sittingbourne 3.6 miles



Address

Heron Close, Lower Halstow, Sittingbourne, Kent, ME9



Directions

For directions to this property please contact us.



Call Rainham Branch 01634 373531 ■ wardsofkent.co.uk



- Legal advice should be taken to verify fixtures/fittings, planning, alterations and/or lease details
- Appliances & services are untested, dimensions are approximate and floor plans are not to scale
- Through a Homewise Home For Life Plan people aged 60+ can secure this property for up to 50% less, by purchasing a Lifetime Lease.



11339095/20251006/CW/DW