



## Nightingale Lane, SW12

£2,700 Per calendar month

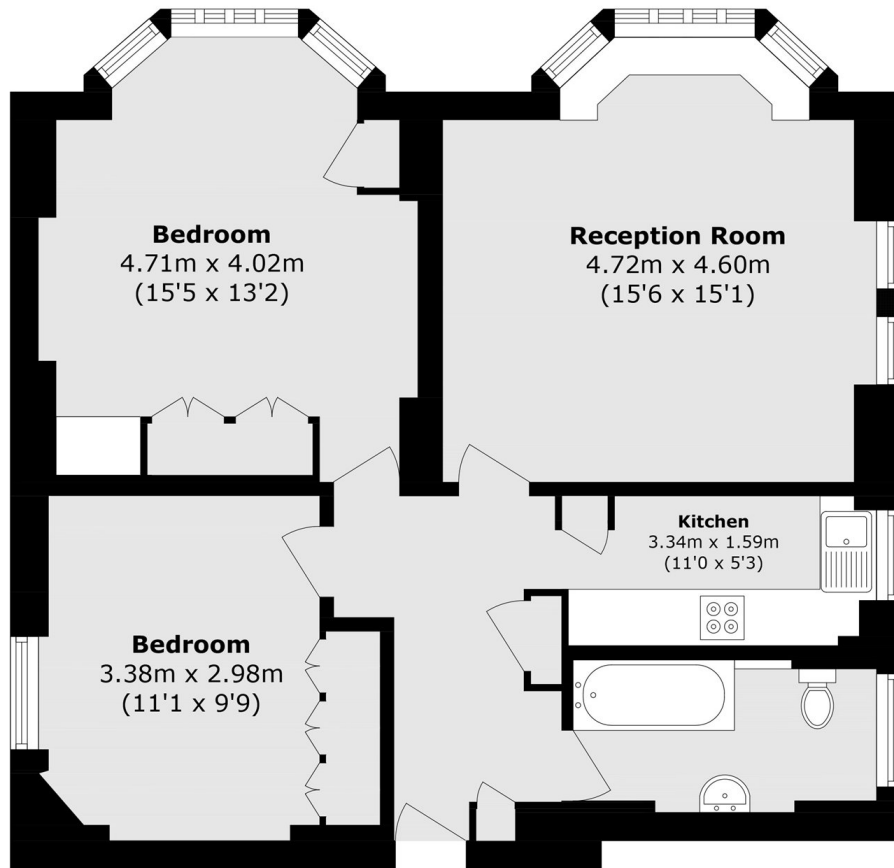
A spacious, well proportioned two double bedroom, first floor apartment in Hightrees House by Clapham South tube station. The property further benefits from a concierge, residents swimming pool/gym and communal roof terrace. The heating and hot water are included.

This wonderful art deco building is located on Nightingale Lane between both Clapham and Wandsworth Commons, so enviably located for easy access to everything that the area has to offer from restaurants, bars, green open spaces and excellent transport links

### Features

- Two Double Bedrooms
- Large Reception Room
- First Floor
- Fitted Wardrobes
- Concierge
- Gym and Swimming Pool
- Heating and Hot Water Included

# Nightingale Lane, London, SW12



Total area (approx.): 70.9 sq. m (763.1 sq. ft)