



Chapman Square, SW19

£725,000

Dexters



Chapman Square, SW19

A 1000 sq ft three bedroom apartment with two bathrooms, west facing balcony and secure underground parking located in a private gated development by Putney Heath & Wimbledon Common.

Chapman Square is a sought after development which is ideally located for easy access into Wimbledon Village, Wimbledon Common, the AELTC Tennis Club & Southfields station.

(*These photos have been virtually staged, please rely on the floorplan and your own measurements regarding exactly how furniture would fit in each room)

Features

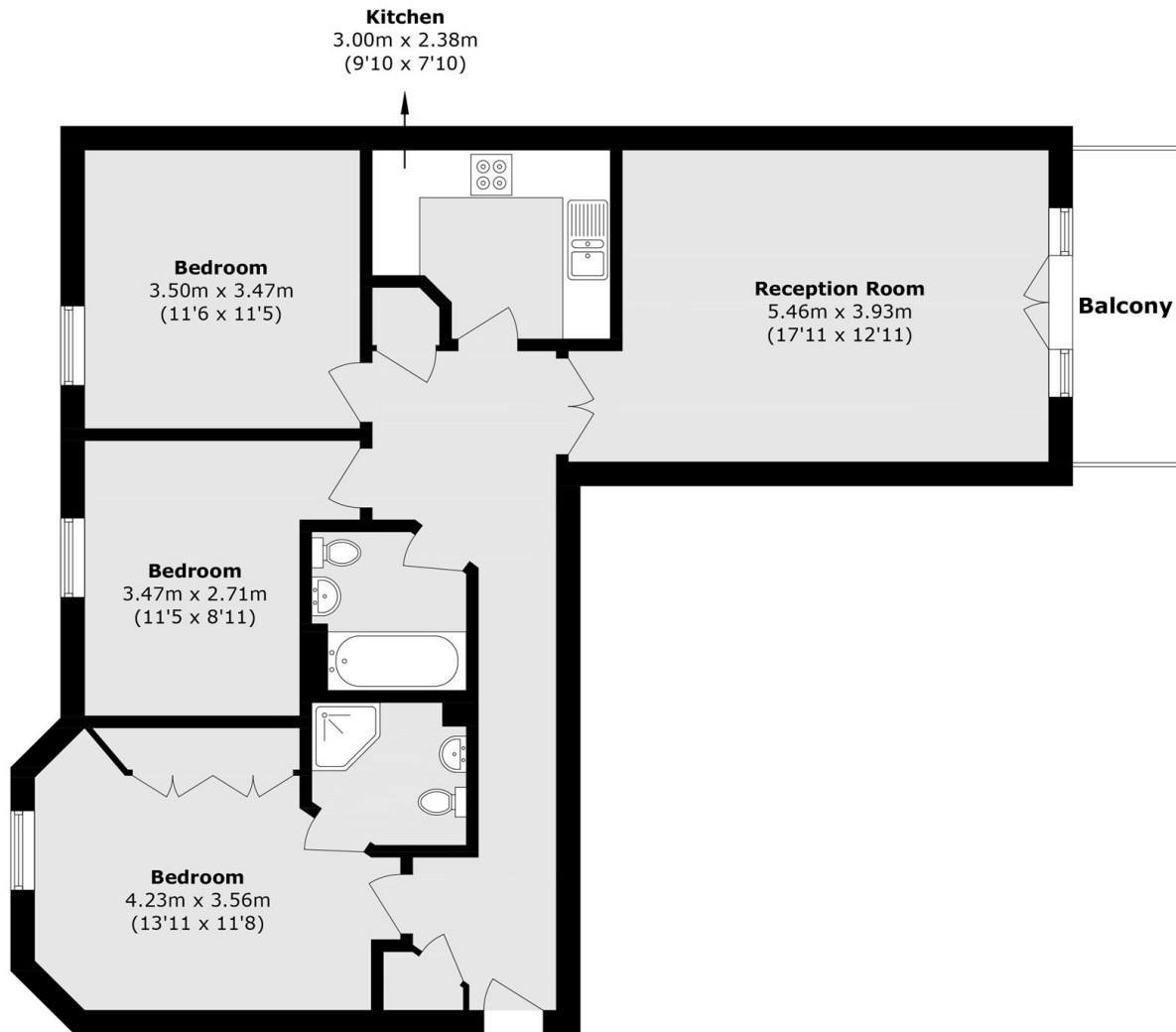
- Three Bedrooms
- Two Bathrooms
- Concierge Service
- Underground Parking
- Communal Gardens
- No Onward Chain







Chapman Square, London, SW19



Total area (approx.): 90.9 sq. m (978.4 sq. ft)
Balcony area (approx.): 5.2 sq. m (55.9 sq. ft)