

Flat 9 Alexandra Apartments 36-38 Alexandra Road South, Whalley Range, Manchester,
M16 8LW



JP&Brimelow
ESTATE AGENTS

Offers In The Region Of £210,000




VIDEO TOUR AVAILABLE A spacious and well-maintained first-floor apartment featuring TWO DOUBLE BEDROOMS, located in a modern development, opposite the beautiful 60 acre Alexandra Park with a lake, sports facilities and parkrun. In the green and desirable area of Whalley Range. Conveniently located near all local amenities on both Withington and Clarendon Road and in Chorlton, with excellent transport links on your doorstep, giving you direct access into the City Centre. This apartment features thoughtfully designed accommodation throughout, comprising of; A communal entrance with stairs and a lift giving access to all floors, a private entrance hallway, two double bedrooms, one of which includes a modern three-piece en-suite shower room, a separate three-piece family bathroom, and a spacious open-plan lounge, fitted kitchen, and dining area. The apartment benefits from secure gated allocated off-road parking, a lift and video intercom, excellent internal storage, is warmed by gas fired central heating with a Worcester combi-boiler and overlooks well-kept communal gardens and trees. The management company is resident owned meaning the service charges are reasonable and the apartments are well-maintained. NO VENDOR CHAIN. Early viewing is highly recommended to avoid disappointment.





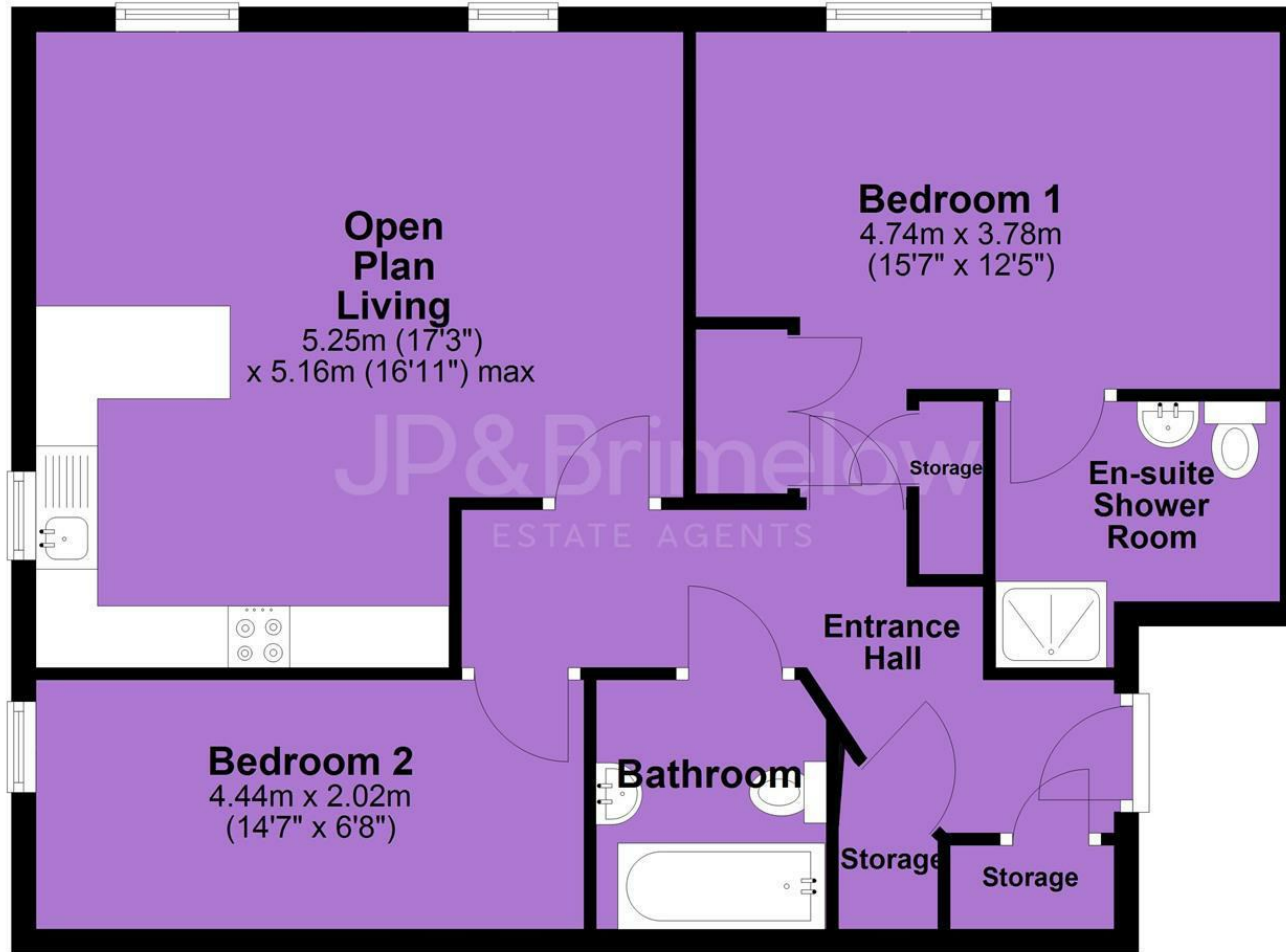
EPC Chart

Energy Efficiency Rating		
	Current	Potential
<i>Very energy efficient - lower running costs</i>		
(92 plus) A		
(81-91) B		
(69-80) C	80	80
(55-68) D		
(39-54) E		
(21-38) F		
(1-20) G		
<i>Not energy efficient - higher running costs</i>		
England & Wales	EU Directive 2002/91/EC 	



Tenure: **Leasehold** Council Tax Band: **B**

First Floor



JP & Brimelow Estate Agents Ltd
430 Barlow Moor Road, Manchester, M21 8AD
Tel: 0161 8822233
E: sales@jpbrimelow.co.uk www.jpandbrimelow.co.uk



JP & Brimelow
ESTATE AGENTS

NOTICE: JP & Brimelow Estate Agents Ltd for themselves and for the vendors or lessors of this property whose agents they are give notice that:

- (i) the particulars are set out as a general outline only for the guidance of intending purchasers or lessees, and do not constitute, nor constitute part of, an offer or contract;
- (ii) all descriptions, dimensions, references to the condition and necessary permissions for use and occupation, and other details are given in good faith and are believed to be correct but any intending purchasers or tenants should not rely on them as statements or representations of fact but must satisfy themselves by inspection or otherwise as to the correctness of each of them;
- (iii) no person in the employment of JP & Brimelow Estate Agents Ltd has any authority to make or give any representation or warranty whatever in relation to this property.

jpandbrimelowstateagents

@jpandbrimelow