

Christian Reid
Estate Agents



Cranleigh

£1,650pcm

Gingers Close, Cranleigh, GU6 7JL



3 Bedrooms



1 Receptions



1 Bathrooms

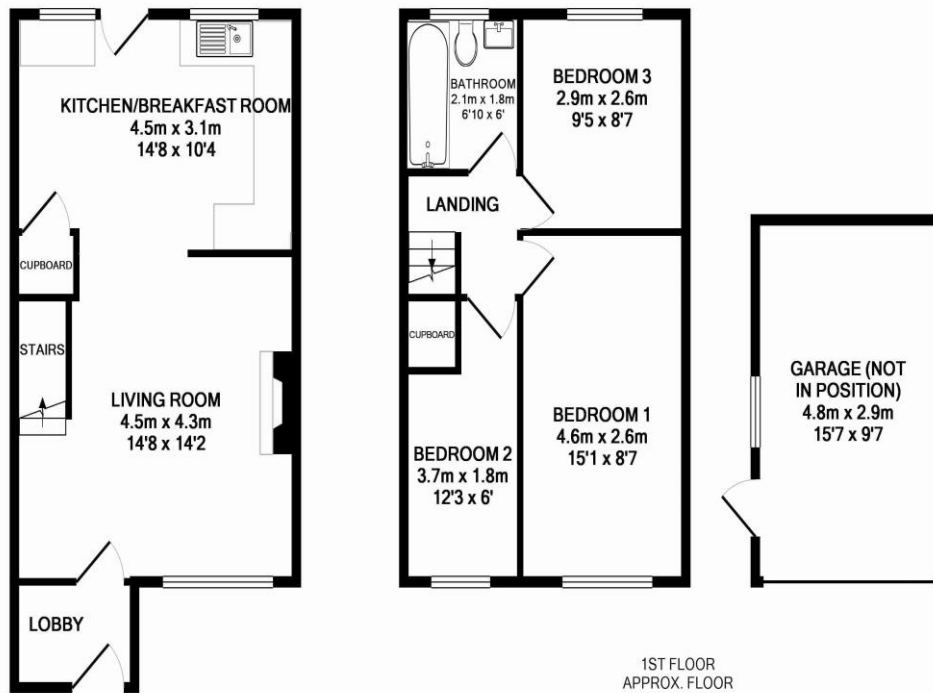


Terraced



EPC: D

A superb House | Situated in a quiet cul-de-sac Opening on to a Front Green | Three bedrooms | Modern New Kitchen/breakfast room | Modern Bathroom | Finished to a High Spec | Newly landscaped gardens | Garage | GCH | Available late March | Unfurnished



GROUND FLOOR
APPROX. FLOOR
AREA 35.9 SQ.M.
(386 SQ.FT.)

1ST FLOOR
APPROX. FLOOR
AREA 47.1 SQ.M.
(507 SQ.FT.)

TOTAL APPROX. FLOOR AREA 83.0 SQ.M. (893 SQ.FT.)

Whilst every attempt has been made to ensure the accuracy of the floor plan contained here, measurements of doors, windows, rooms and any other items are approximate and no responsibility is taken for any error, omission, or mis-statement. This plan is for illustrative purposes only and should be used as such by any prospective purchaser. The services, systems and appliances shown have not been tested and no guarantee as to their operability or efficiency can be given
Made with Metropix ©2016