



## Wymering Road, W9

£800,000

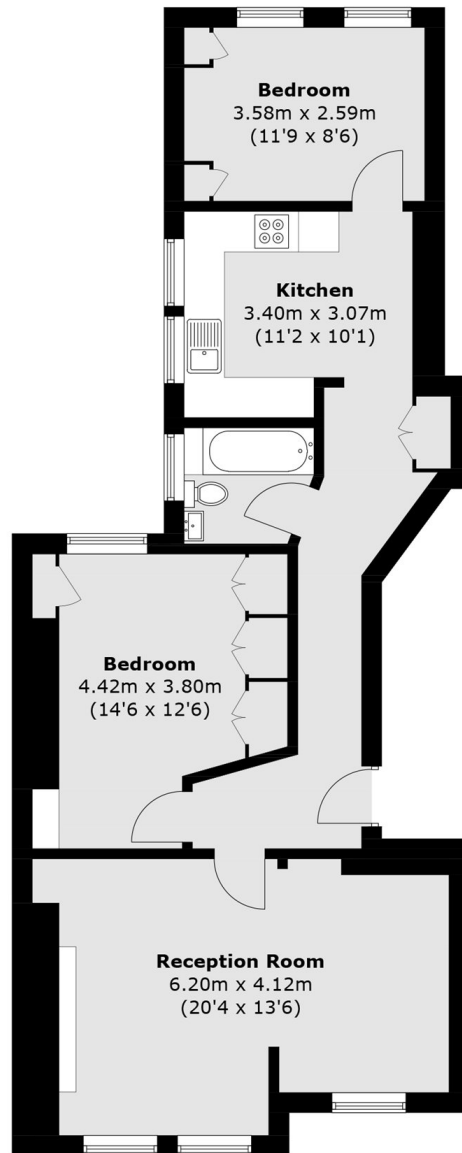
A top floor set in one of Maida Vale's iconic red brick mansion blocks, with approved planning permission for loft extension. This well-presented property comes complete with a spacious reception, two double bedrooms, modern separate kitchen and wooden flooring throughout.

Wymering Road is ideally located in the heart of Maida Vale, providing fantastic access for Maida Vale and Warwick Avenue underground stations (Bakerloo line), Paddington Recreation Ground as well as a number of local shops and cafés.

### Features

- Approved Planning Permission
- Communal Gardens
- Double Reception Room
- Wooden Flooring Throughout
- Great Transport Links
- Chain Free

# Wymering Road, Maida Vale, W9



## Fourth Floor

Total area (approx.): 74.4 sq. m (800.8 sq. ft)