



STEPHENSON BROWNE



## Minnie Close, Halmer End, Stoke-On-Trent

ST7 8BY



£475,000

## DESCRIPTION

An EXTENDED four bedroom detached family home with a STUNNING OPEN-PLAN KITCHEN/DINER, presented to an exceptional standard throughout!

An incredibly spacious family home which would perfectly suit the needs of a growing family, this gorgeous home has been meticulously upgraded and improved to an extraordinary specification, and is a real credit to our current owners.

An entrance hallway leads to the main lounge, with a separate sitting room, study and a useful downstairs W/C, but the main focal point of the home is the simply stunning open-plan kitchen diner. Benefitting from a host of integrated Neff appliances, a central island with a breakfast bar and Quartz work surfaces, the kitchen creates the perfect place to entertain and to accommodate large families, whilst remaining a light and airy room thanks to two large skylight windows. Completing the ground floor is a very useful utility room.

Upstairs, there is a spacious galleried landing accessing all four bedrooms and the family bathroom, with the principal bedroom benefiting from an en-suite shower room and several fitted wardrobes. Ample off-road parking for multiple vehicles is provided via a full-width brick paved driveway, whilst the landscaped rear garden features a porcelain tiled patio area, with a lawn, mature border shrubs and raised timber beds. A beautiful spot to relax and enjoy the best of the summer weather!

Situated in a quiet cul-de-sac position on Minnie Close, just off Cooperative Lane, the property is ideally placed retaining a fantastic semi-rural position, whilst remaining close to commuting links such as the A500, M6 and



A34. Schools such as Sir Thomas Boughy Academy and Wood Lane Primary School are nearby, whilst a number of walks within the local countryside are also available.

A stunning and spacious family home which must be seen to be fully appreciated! Please contact Stephenson Browne to arrange your viewing.



# ROOM DESCRIPTIONS

## Entrance Porch

Composite front door, UPVC double glazed windows, laminate flooring, wall light point, electric heater, space for coats etc, door leading into;

## Entrance Hall

Tiled flooring, ceiling light point, radiator, under stairs storage cupboard.

## Lounge

16'10" x 11'2"

Laminate flooring, UPVC double glazed window and French doors leading to the rear garden, ceiling light point, radiator, feature fireplace.

## Sitting Room

10'11" x 9'1"

Laminate flooring, UPVC double glazed window, ceiling light point, radiator. Potential to be a fifth bedroom if desired.

## Study

9'8" x 7'4"

Laminate flooring, UPVC double glazed window, ceiling light point, radiator.

## Downstairs W/C

5'3" x 3'3"

Tiled flooring, ceiling light point, radiator, W/C, wash basin with vanity unit, tiled splashback.

## Open-Plan Kitchen/Diner

18'6" x 17'8"

Minimum measurements - Amtico flooring, two UPVC double glazed windows and French doors leading to the rear garden, two large skylight windows, downlights and ceiling light points, two tall radiators. Wall and base units, central island with breakfast bar, Quartz work surfaces, one and a half bowl inset sink, Quooker tap (with cold water filter), integrated Neff appliances including five-ring induction hob, double oven, microwave oven with plate warmer, dishwasher, wine cooler, space for an American-style fridge/freezer.

## Utility Room

8'6" x 7'7"

Maximum measurements - Amtico flooring, UPVC double glazed window and rear door, downlights, radiator, Worcester combi boiler, inset sink, Quartz work surface, space and plumbing for appliances, airing cupboard.

## Landing

A galleried landing with fitted carpet, UPVC double glazed window, ceiling light point, radiator, loft access, airing cupboard with radiator.

## Bedroom One

13'5" x 8'11"

Fitted carpet, UPVC double glazed window, ceiling light point with ceiling fan, radiator, fitted wardrobes.



### **En-Suite**

8'3" x 3'11"

Minimum measurements - Vinyl laminate effect flooring, UPVC double glazed window, downlights, part tiled walls, chrome towel radiator, fitted unit with W/C, wash basin and vanity unit, shower cubicle.

### **Bedroom Two**

11'5" x 8'7"

Minimum measurements - Fitted carpet, UPVC double glazed window, ceiling light point with ceiling fan, radiator, two fitted wardrobes.

### **Bedroom Three**

10'10" x 9'1"

Fitted carpet, UPVC double glazed window, ceiling light point, radiator.

### **Bedroom Four**

8'6" x 8'1"

Fitted carpet, UPVC double glazed window, ceiling light point, radiator.

### **Bathroom**

7'1" x 6'1"

Tiled flooring, part tiled walls, UPVC double glazed window, ceiling light point, extractor fan, radiator, W/C wash basin with vanity unit, bath with overhead shower.

### **Outside**

To the front of the property is a full-width brick paved driveway, providing ample off-road cars for multiple vehicles. The beautifully landscaped rear garden features a porcelain tiled patio with a lawn and mature border shrubs, including timber beds - an idyllic setting to relax or entertain!

### **Garage**

A detached single garage with Up and Over garage door and a separate side access door.

### **Council Tax Band**

The council tax band for this property is E.

### **Freehold Tenure**

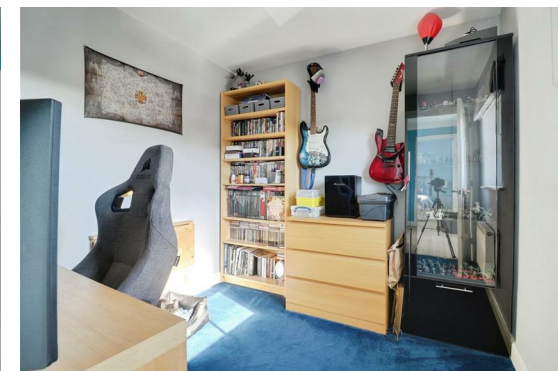
We have been advised that the property tenure is Freehold. We would advise any potential purchasers to confirm this with a conveyancer prior to exchange of contracts.

### **NB: Copyright**

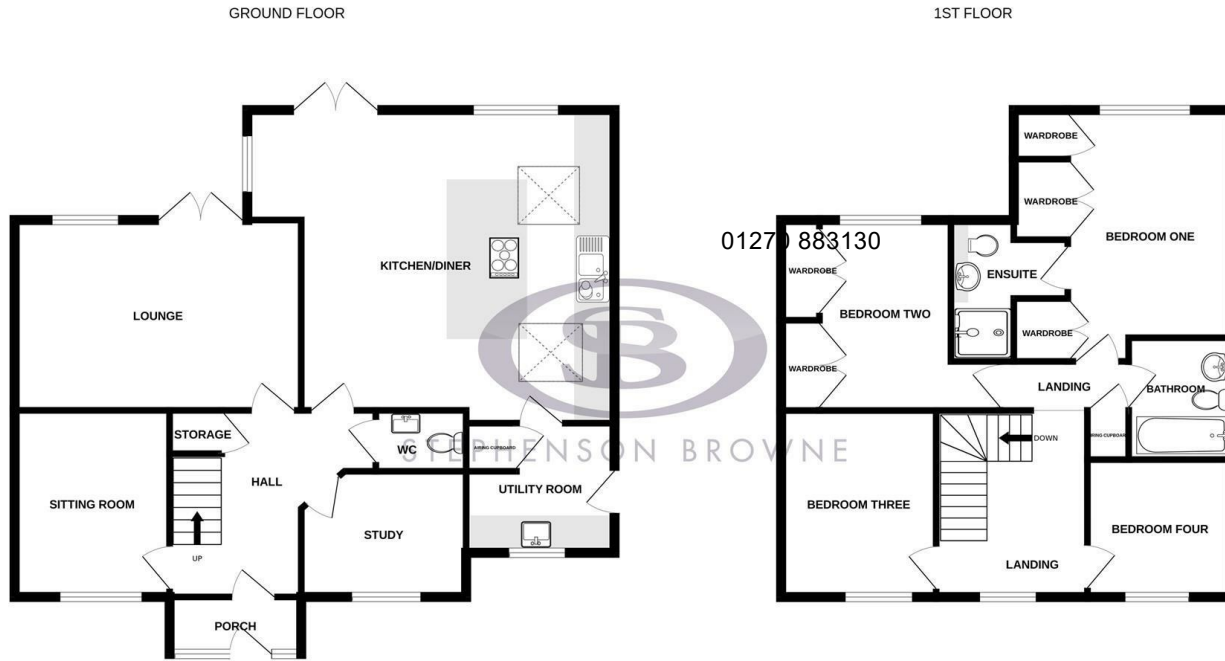
The copyright of all details, photographs and floorplans remain the possession of Stephenson Browne.

### **Alsager AML Disclosure**

Agents are required by law to conduct Anti-Money Laundering checks on all those buying a property. Stephenson Browne charge £49.99 plus VAT for an AML check per purchase transaction. This is a non-refundable fee. The charges cover the cost of obtaining relevant data, any manual checks that are required, and ongoing monitoring. This fee is payable in advance prior to the issuing of a memorandum of sale on the property you are seeking to buy.



# Floorplans

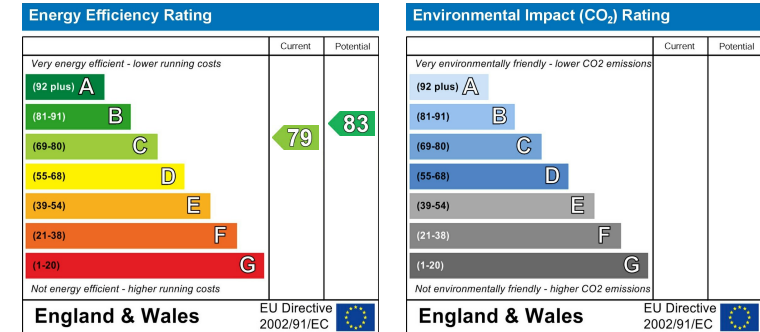


Whilst every attempt has been made to ensure the accuracy of the floorplan contained here, measurements of doors, windows, rooms and any other items are approximate and no responsibility is taken for any error, omission or mis-statement. This plan is for illustrative purposes only and should be used as such by any prospective purchaser. The services, systems and appliances shown have not been tested and no guarantee as to their operability or efficiency can be given.  
Made with Metropix ©2026

# Area Map



# EPC Rating



# Viewing

Please contact our office using the details provided on the final page if you are interested in booking a viewing or require further information.

NOTICE: Stephenson Browne for themselves and for the vendors or lessors of this property whose agents they are give notice that: (1) the particulars are set out as a general guideline only for the guidance of intending purchasers or lessees, and do not constitute, nor constitute part of, an offer or contract; (2) all descriptions, dimensions, references to condition and necessary permissions for use and occupation, and other details are given in good faith and are believed to be correct but any intending purchasers or tenants should not rely on them as statements or representations of fact but must satisfy themselves by inspection or otherwise as to the correctness of each theme; (3) no person in the employment of Stephenson Browne has any authority to make representation or warranty whatever in relation to this property. (4) fixtures & fittings are subject to a formal list supplied by the vendors solicitors. **Referring to: Move with Us Ltd Average Fee: £123.64**

**T: 01270 883130 E: alsager@stephensonbrowne.co.uk**

[www.stephensonbrowne.co.uk](http://www.stephensonbrowne.co.uk)