

Property ref: 143986



Lansdowne View, Reading, RG31 5DR

£1,500 PCM



A two bedroom semi-detached home offered to the market on an unfurnished basis. This stunning two bed two bath home is built at

https://v4.salesandlettings.online/pls/haslamss/e_agent_data.details_sheet_p

- Two double bedrooms; both with en-suites

Stoneham park by Darcliffe Homes. Stoneham Park enjoys a positively rural outlook, backing onto open fields with views of the popular Sulham Woods and beyond.

West Berkshire Council Tax Band D

Vans are not permitted on this development, against the terms of the head lease.

Available Now

- Gas central heating
- Fully fitted kitchen with appliances
- Off road allocated parking
- Unfurnished; EPC rating B
- Managed by HASLAMs

*Fees For Assured Shorthold Tenancies: when you rent a property from us you will be required to pay a sum equivalent to one weeks' rent for a holding deposit. Upon successful application, this amount will be off set against your first months' rent. You will also be required to pay a security deposit equivalent to 5 weeks' rent which will be held and protected in line with Deposit legislation. For more information about our fees please visit: www.haslams.net

Fees for all other tenancies (Non Housing Act Tenancies / Company Lets): when you rent a property from us we will charge you a one-off fee per property. This charge is the equivalent of 15 days of the monthly rental charge (+VAT) with a minimum fee of £450 (inc.VAT) up to a maximum of £650 (inc.VAT). Other fees may apply depending on your circumstances.

0118 960 1055

lettings@haslams.net www.haslams.net

Haslams Estate Agents Ltd, 159 Friar Street, Reading, Berkshire, RG1 1HE

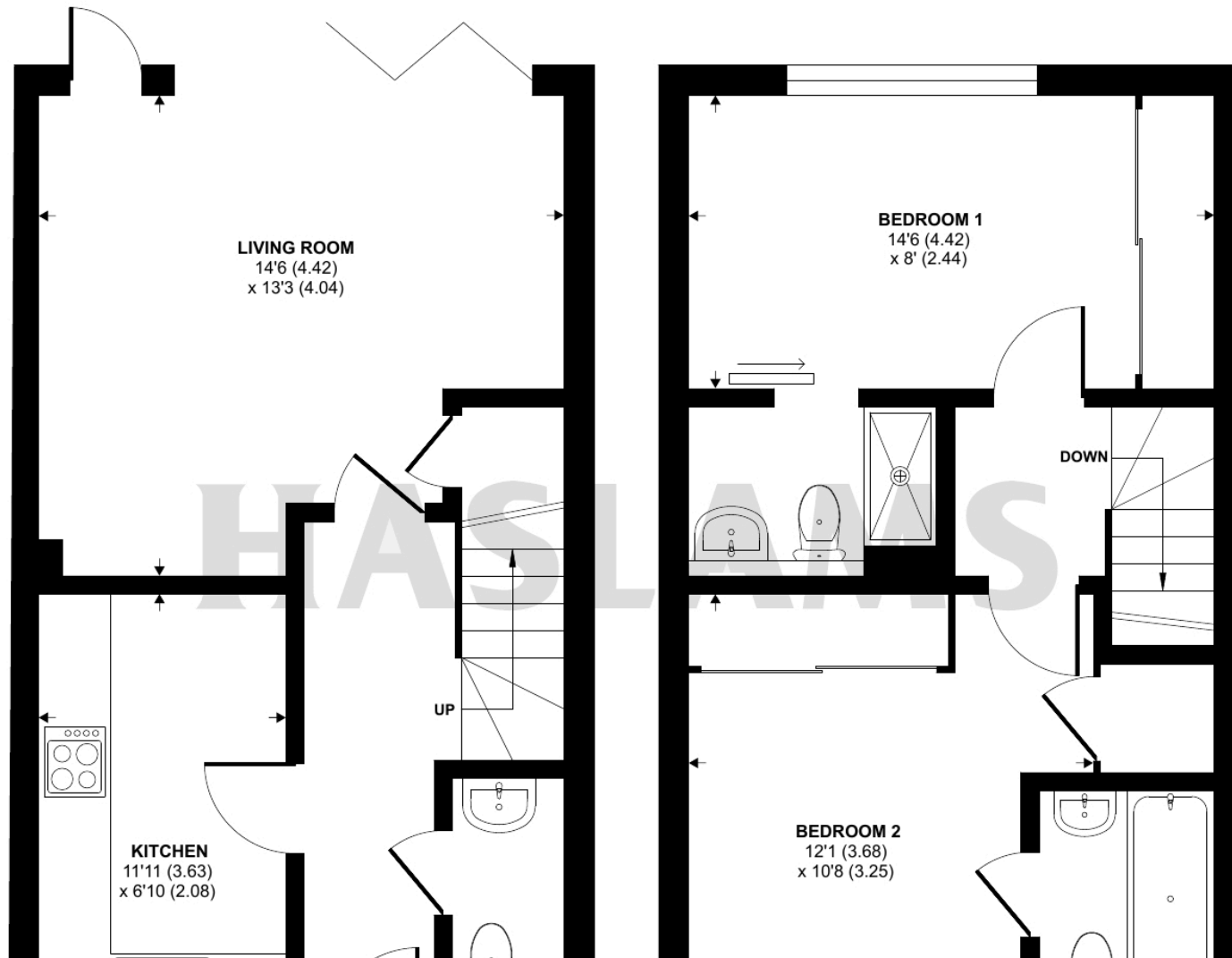


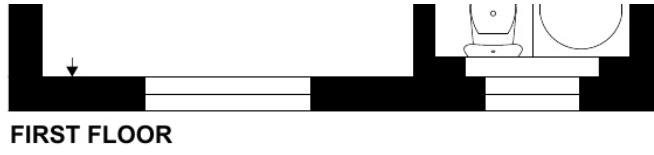
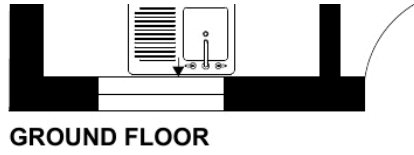


Lansdowne View, Tilehurst, Reading

Approximate Area = 744 sq ft / 69 sq m

For identification only - Not to scale





Floor plan produced in accordance with RICS Property Measurement Standards incorporating International Property Measurement Standards (IPMS2 Residential). © n1cheom 2022. Produced for Haslams. REF: 855504