



## West Hill, SW15

£2,600 Per calendar month

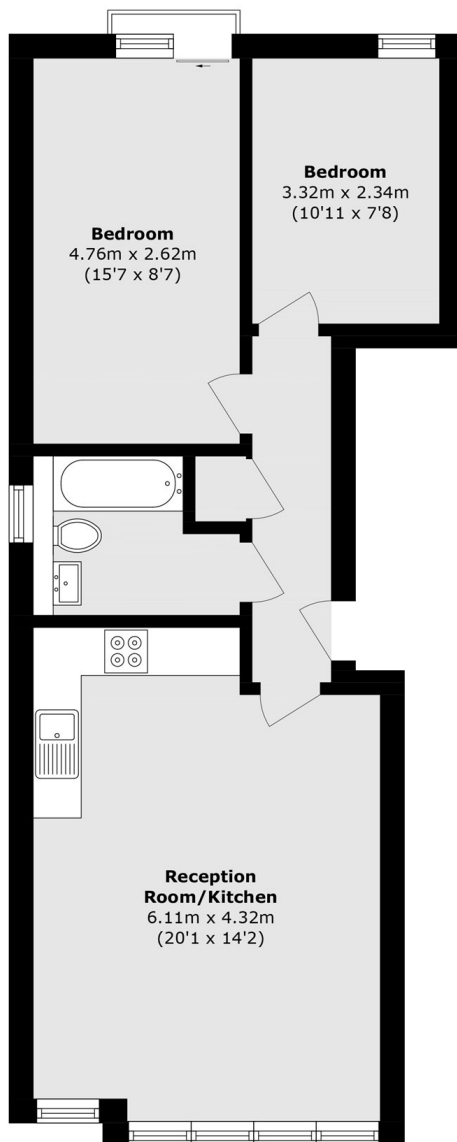
This first floor, two bedroom apartment is flooded with natural light and boasts premium appliances, underfloor heating, and access to a communal garden.

West Hill is beautiful road in Wandsworth, well located for buyers seeking the balance between a quiet location with great access to transport links. East Putney Tube station and bus links are close by as well easy access to the A3 and through to Wandsworth.

### Features

- Two Bedrooms
- Integrated Kitchen
- Modern Bathroom Suite
- Underfloor heating
- Open Plan Reception
- Communal Garden

West Hill,  
London, SW15



Total area (approx.): 56.8 sq. m (611.3 sq. ft)