

ROBERTSON PHILLIPS
Estate Agents, Valuers,
Lettings and Property Management

40 Station Road, North Harrow,
Middlesex, HA2 7SE
Tel: 0208 863 1122

Email: harrow@robertsonphillips.co.uk

Harrow Lettings: 0208 092 4045
Hatch End/Pinner Sales: 0208 428 7161



**ROBERTSON
PHILLIPS**

Est. 1991

WALTON DRIVE, HARROW



Four Bedroom Semi Detached House

£615,000



www.robertsonphillips.co.uk

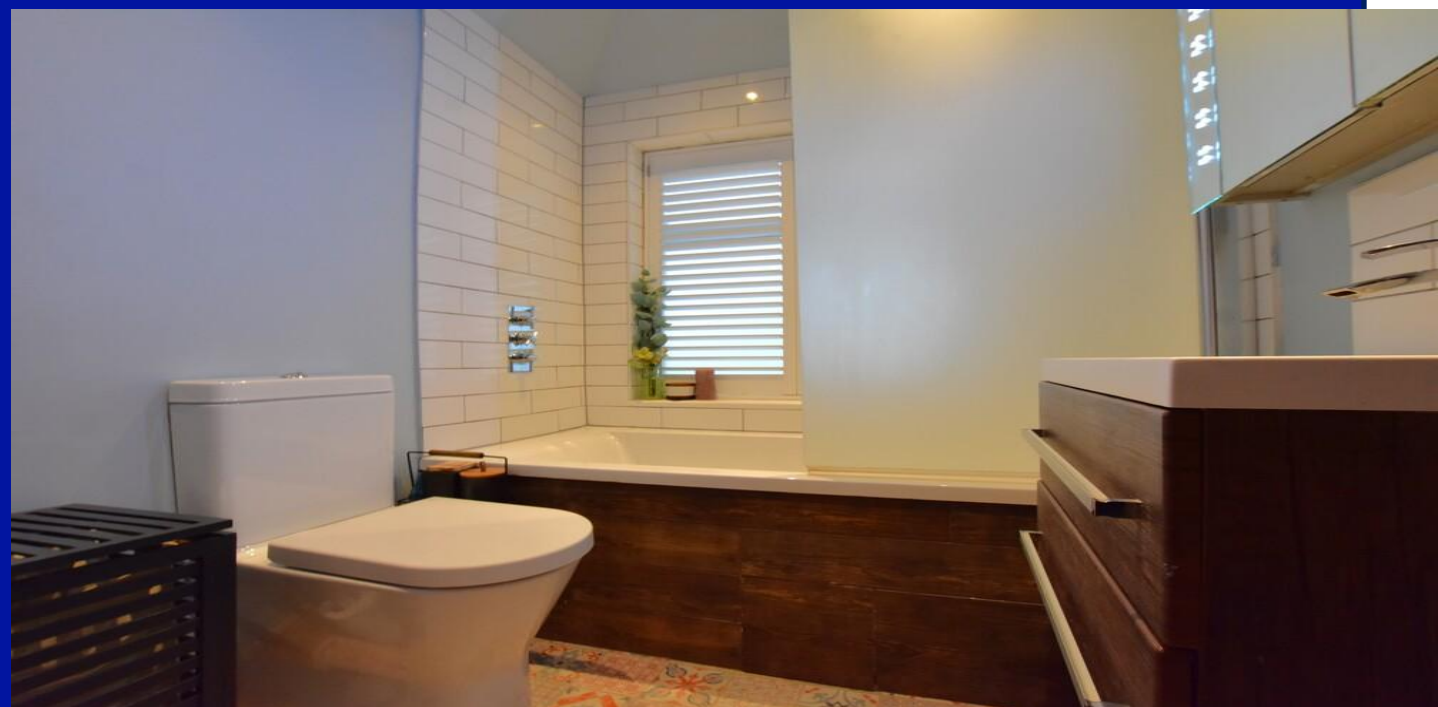


Description

An extended semi detached family house located within access to sought after schools and access into Central Harrow. The house, which is currently used as four bedrooms, benefits from gas central heating, double glazed windows, a through lounge, extended kitchen//diner, a ground floor fourth bedroom and ground floor shower/cloakroom. To the first floor there are three bedrooms and a family bathroom with shower cubicle as well as bath. To the front there is off street parking with side access to the rear garden which is mainly laid to lawn with large patio area.



Location:



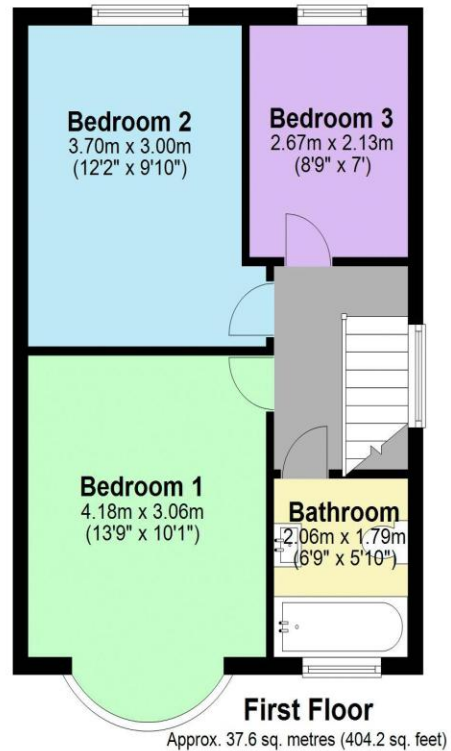


- *Extended semi detached house used as four bedrooms*
- *Offered for sale in very good order throughout*
- *Off street parking*
- *Fourth bedroom on the ground floor with shower facilities*
- *Gas central heating and double glazed windows*
- *South facing garden*
-



Additional Information

TENURE. FREEHOLD
LOCAL AUTHORITY. LONDON BOROUGH HARROW
ENERGY EFFICIENCY RATING. C



Total area: approx. 96.0 sq. metres (1033.5 sq. feet)



We have not sought to verify the legal title of the property, the existence of planning permissions and/or building regulation approvals and have been unable to check the working condition of any services or appliances.

Property layouts are for general guidance and are not drawn exactly to scale. Measurements are taken at the widest points and bays, alcoves, wardrobes etc. may not be shown.