



Morgans

PROPERTY

12, Whyte Street, Lochgelly, KY5 9DA

Offers Over £129,950











# Welcome

## DESCRIPTION

Early entry and keenly priced is this excellent starter home or would suit a growing family or indeed any buyer who is looking for a bedroom on the ground floor is this deceptively spacious mid terraced cottage style villa. The property is offered in nice condition and fresh throughout. It briefly comprises entrance hallway, spacious lounge/diner, kitchen with door to gardens and double bedroom. On the upper level there are two further good sized bedrooms and stylish bathroom. The property has an enclosed gardens with patio area, providing a child and pet safe environment. The subjects are double glazed with gas central heating.







### **EXTRAS INC. IN SALE/AGENTS NOTE**

All floor coverings, blinds, bathroom and light fittings together with integrated appliances.

From 1st February 2022, residential properties in Scotland are required by law to have installed a system of inter-linked smoke alarms, carbon monoxide detectors and heat detectors (the “inter-linked system”). No warranty is given that any interlinked system has been installed in this property and interested parties should make their own enquiries.







## Lochgelly

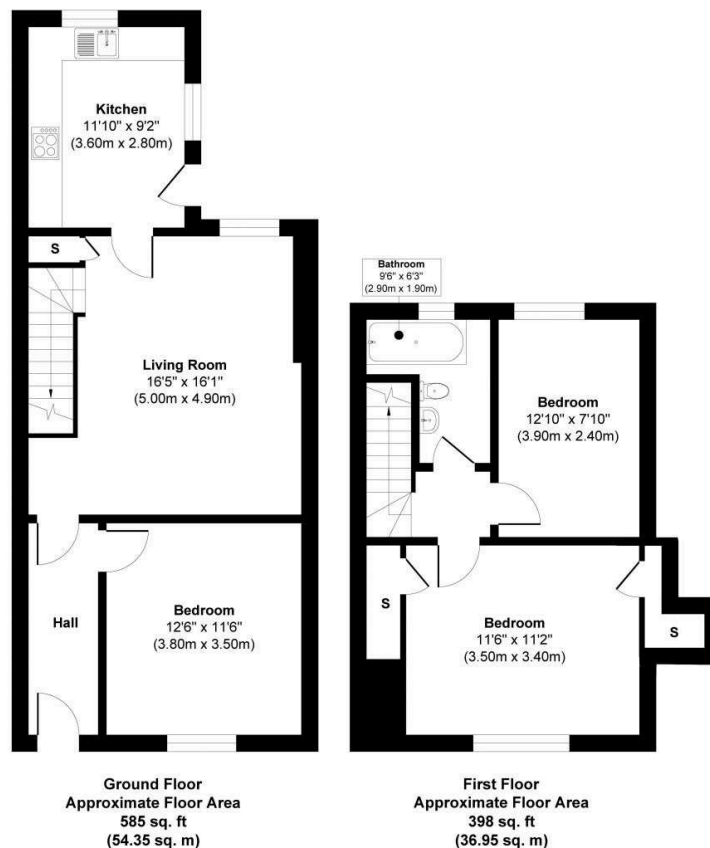
Lochgelly town is to the east of Dunfermline. The town has local amenities and recreational facilities, including The Lochgelly Centre, a hub for the community, primary and secondary schooling, are within easy reach, as is the railway station. There are also good transport links making this an ideal location for commuters, with the A92 and M90 a short distance away. The towns of Cowdenbeath, Kirkcaldy and Dunfermline have extensive amenities and are within easy reach.

## Morgans Property Package

We provide the complete buying and selling package including a comprehensive estate agency service and full legal service. We are also Mortgage and Financial Advisers. For a FREE PRE-SALE VALUATION, estimate and market appraisal without cost or obligation, contact us.







**Approx. Gross Internal Floor Area 983 sq. ft / 91.30 sq. m**

This floor plan is for illustrative and marketing purposes only and is to be used as a guide only. No details are guaranteed on measurements, floor areas, or orientation and do not form any agreement. No liability is taken for error, omission or misstatement. A party must rely upon its own inspection(s). Created by 9AM Media



**SOLICITORS | PROPERTY**  
 33 East Port, Dunfermline, Fife, KY12 7JE  
 Tel: 01383 620222 Fax: 01383 621213  
[www.morganlaw.co.uk](http://www.morganlaw.co.uk)



AGENTS NOTE These particulars do not form part of any contract and the statements or plans contained herein are not warranted nor to scale. Approximate measurements have been taken by electronic device at the widest point. Services and appliances have not been tested for efficiency or safety and no warranty is given as to their compliance with any Regulations. No movable items will be included in the sale.