



Connells

Foster Hill Road
Bedford



Property Description

****Well-Presented Two Double Bedroom Duplex Apartment | Central Bedford Location | Allocated Parking****

Situated on the sought-after Foster Hill Road in the heart of Bedford, this well-presented two double-bedroom duplex apartment offers spacious and versatile accommodation, ideally located within easy walking distance of Bedford Park, local shops, restaurants, and a wide range of everyday amenities.

The accommodation briefly comprises an inviting entrance hall leading to a modern open-plan kitchen and dining area, providing an excellent space for both everyday living and entertaining. In addition, there is a separate living room offering a comfortable and relaxing environment.

To the first floor, the property benefits from two well-proportioned double bedrooms and a contemporary family bathroom.

Externally, the property further benefits from allocated off-road parking, adding convenience for residents and visitors alike.

Ideally suited to first-time buyers, professional couples, investors, or those looking to enjoy a central Bedford lifestyle, this fantastic duplex apartment must be viewed to be fully appreciated.

Viewing is highly recommended to appreciate the spacious accommodation and excellent location on offer.

Entrance Hall

Kitchen/Dining Area

Lounge

Cloakroom W/C

First Floor

Bedroom One

Bedroom Two

Family Bathroom

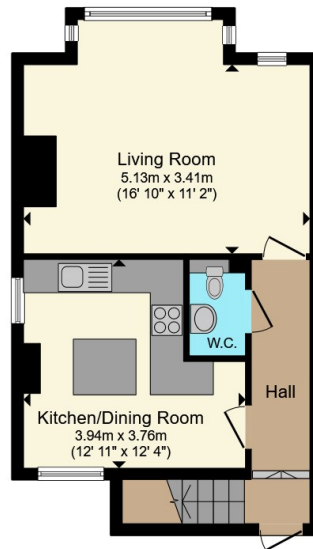
External

Allocated Parking Space

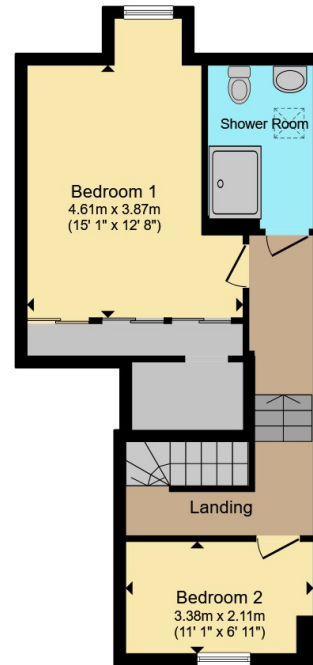








Ground Floor



First Floor

Total floor area 89.0 m² (958 sq.ft.) approx

This floor plan is for illustrative purposes only. It is not drawn to scale. Any measurements, floor areas (including any total floor area), openings and orientation are approximate. No details are guaranteed, they cannot be relied upon for any purpose and they do not form part of any agreement. No liability is taken for any error, omission or misstatement. A party must rely upon its own inspection(s). Powered by www.propertybox.io



To view this property please contact Connells on

T 01234 345 303
E bedford@connells.co.uk

42 Allhallows
BEDFORD MK40 1LN

EPC Rating: C Council Tax
Band: A

Service Charge:
1440.00

Ground Rent:
Ask Agent

Tenure: Leasehold

view this property online [connells.co.uk/Property/BED313185](https://www.connells.co.uk/Property/BED313185)

This is a Leasehold property. We are awaiting further details about the Term of the lease. For further information please contact the branch. Please note additional fees could be incurred for items such as Leasehold packs.



1. MONEY LAUNDERING REGULATIONS Intending purchasers will be asked to produce identification documentation at a later stage and we would ask for your co-operation in order that there will be no delay in agreeing the sale. 2. These particulars do not constitute part or all of an offer or contract. 3. The measurements indicated are supplied for guidance only and as such must be considered incorrect. Potential buyers are advised to recheck measurements before committing to any expense. 4. We have not tested any apparatus, equipment, fixtures, fittings or services and it is in the buyers interest to check the working condition of any appliances.

Connells Residential is registered in England and Wales under company number 1489613, Registered Office is Cumbria House, 16-20 Hockliffe Street, Leighton Buzzard, Bedfordshire, LU7 1GN. VAT Registration Number is 500 2481 05.

See all our properties at www.connells.co.uk | www.rightmove.co.uk | www.zoopla.co.uk

Property Ref: BED313185 - 0002