



18, Everton Road, Hordle, Lymington, SO41 0FF

£450,000

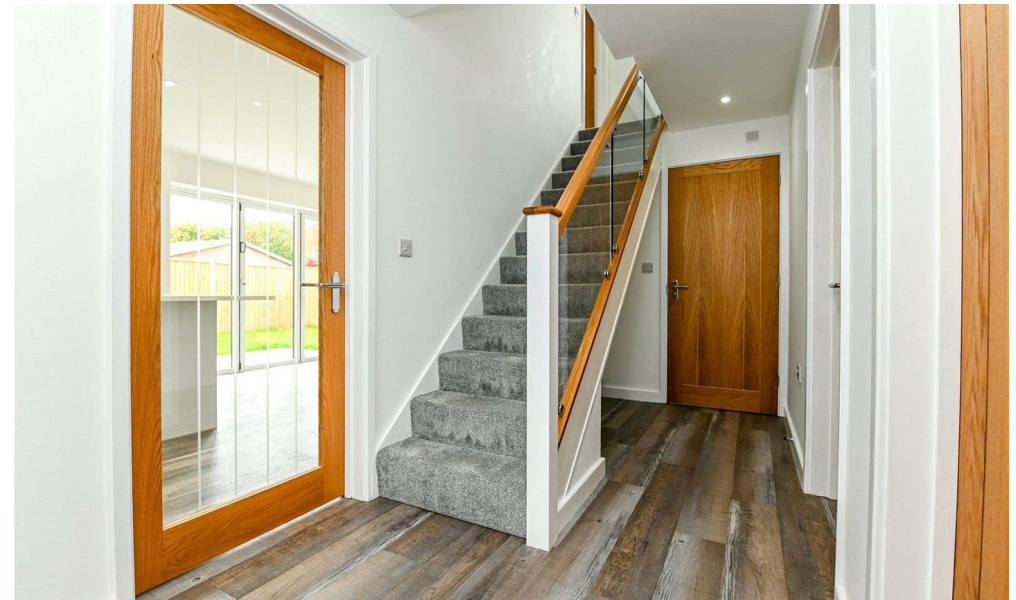
Mitchells
1963 — TODAY



*18 Everton Road
Hordle
Lymington
Hampshire
SO41 0FF*

A fantastic opportunity to purchase this brand new three bedroom chalet bungalow, situated in the heart of Hordle village and just a short walk from the local school and shops. The property has been finished to an exceptionally high standard, featuring a kitchen/family room, a separate reception room, a ground floor study/bedroom three, a ground floor cloakroom, secluded gardens, and a ten year building guarantee.

- Entrance Hall
- Kitchen/Family Room
- Reception Room
- Ground Floor Study/Bedroom Three
- Cloakroom
- Two First Floor Double Bedrooms
- Built-In Wardrobes
- Luxury Shower Room
- Driveway
- Secluded Gardens



The Property

Entrance hall with timber effect flooring that continues throughout the entire ground floor, stairs to the first floor landing, recessed ceiling spotlights, and an electrical consumer unit.

The kitchen/family room is fitted with high specification wall and base units, and a contrasting quartz worktop. Integrated Neff appliances include a tall stand up fridge/freezer, a washing machine, a dishwasher, a four burner induction hob with an extractor fan above, an under counter oven, a glass splashback, a stainless steel one and a half bowl sink unit with a mixer tap and drainer, and a breakfast bar.

This opens through to the family area, featuring bi-fold doors leading out to the patio and rear garden, along with a UPVC double glazed window overlooking the rear.

Reception room with a TV aerial point and a UPVC double glazed window with a rear outlook.

The ground floor study/bedroom three is situated at the front of the property, with a TV aerial point and a UPVC window.

The ground floor cloakroom is fitted with a luxury white suite comprising a WC, a wash hand basin with mixer tap and storage beneath, an extractor fan, and a UPVC window.

First floor landing with a window and a double radiator.

The family bathroom is fitted with a white suite, comprising a corner shower cubicle with thermostatic shower fittings and glass sliding doors, a wall hung wash hand basin with a mixer tap and storage beneath, a WC, a panel bath with handheld shower attachments, a chrome heated towel rail, and an extractor fan.

On the first floor, there are two double bedrooms. The master bedroom is particularly spacious, featuring an excellent range of built-in wardrobes, a bright double aspect, and a built-in airing cupboard housing the pressurised water cylinder and slatted shelving.

The property is offered with vacant possession, and viewing is highly recommended.



Gardens & Grounds

To the front of the property is a driveway providing off road parking for three to four vehicles, with a side gate granting access to the rear garden, which features a patio area, mature borders, and the remainder laid to lawn.



Services

Mains gas, electricity, water and drainage

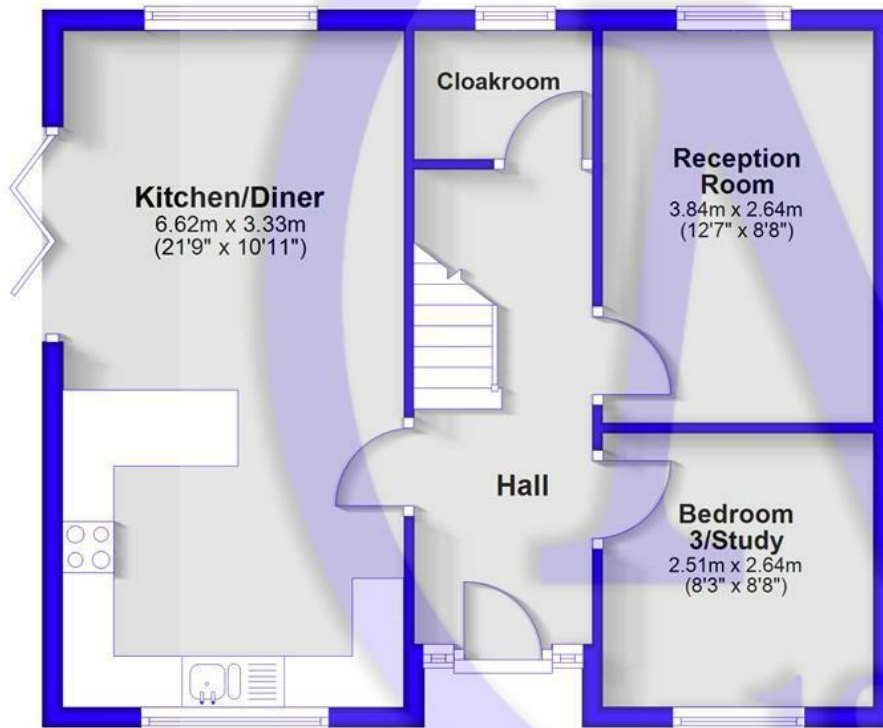
Council Tax Band:

Energy Performance Certificate (EPC) Rating:

EST.

Ground Floor

Approx. 51.3 sq. metres (552.0 sq. feet)



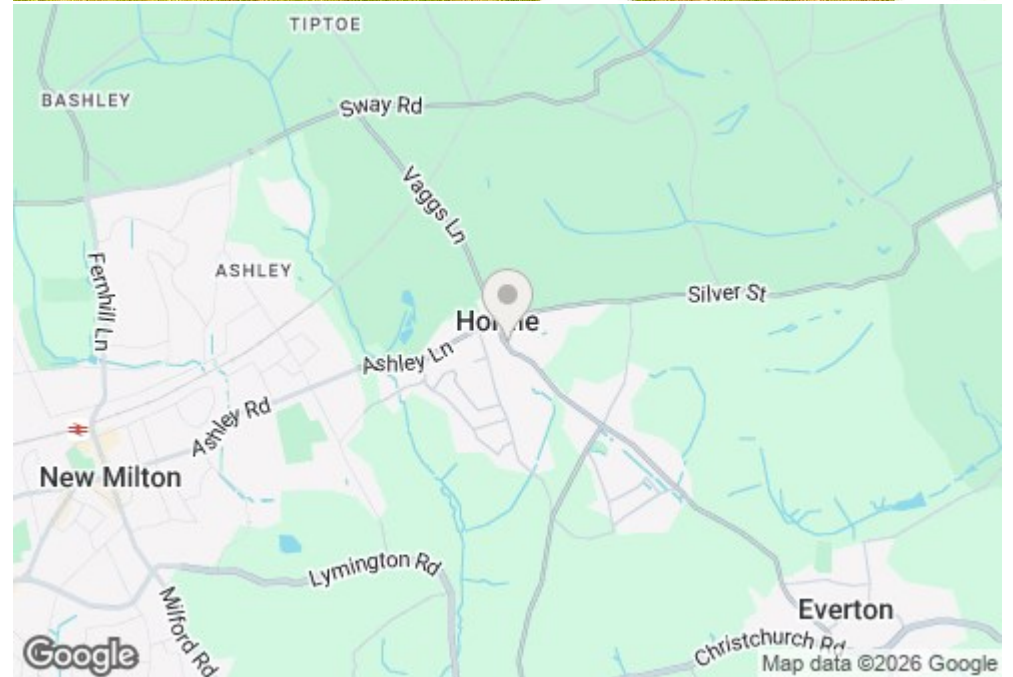
First Floor

Approx. 41.7 sq. metres (448.6 sq. feet)



1963

Total area: approx. 93.0 sq. metres (1000.6 sq. feet)



Situation

Hordle is a charming village located between the Georgian town of Lymington and the bustling New Milton. It boasts an Ofsted-rated 'Outstanding' primary school and excellent local amenities, including a pharmacy, a Co-Op, a village pub, and a sports ground. With easy access to New Milton's mainline railway station, the picturesque quay at Lymington, and nearby attractions like the New Forest National Park and the cliff-top Barton on Sea beach, Hordle is an ideal location for your new home.



Mitchells.uk.com
info@mitchells.uk.com
01425 616411

Centenary Buildings
8-10 Old Milton Road
New Milton
Hampshire
BH25 6DT

Mitchells
1963 — TODAY

