



77 Ebury Street  
Belgravia, SW1W

CHESTERTONS





This well-proportioned first-floor apartment extends to approximately 1,109 sq. ft and is set within an attractive period building positioned prominently on the corner of Ebury Street and Ecclestone Street, in the heart of SW1W.

The property offers a thoughtfully arranged layout, comprising two generous double bedrooms, including a principal bedroom with en-suite bathroom, alongside a second well-appointed bathroom. The accommodation is further enhanced by a bright and spacious reception area, ideal for both relaxing and entertaining.

Offered unfurnished, the apartment provides an excellent opportunity for tenants to personalise the space to their own taste and style.

Ideally located on a vibrant and sought-after high street, residents benefit from immediate access to an array of local amenities, including a wide selection of boutique shops, bars, cafés, and restaurants. The area is well-connected, making it a convenient base for both work and leisure.

This property combines period charm with practical modern living in one of London's most desirable neighbourhoods.

### £8,000 pcm

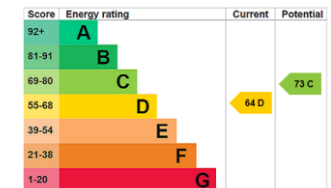
Additional tenant charges apply (fees apply to non-AST tenancies only)

Tenancy Agreement Fee: £300

References per Tenant/Guarantor: £60

Inventory check (approx. £100 – £250 inc. VAT)

[chestertons.co.uk/property-to-rent/applicable-fees](http://chestertons.co.uk/property-to-rent/applicable-fees)



**Minimum Term:** 12 months  
**Deposit Required:** 6 weeks  
**Local Authority:** City of Westminster  
**Council Tax Band:** F  
**EPC Rating:** D  
**Unfurnished**

### Chestertons Knightsbridge & Belgravia Lettings

31 Lowndes Street  
 London  
 SW1X 9HX

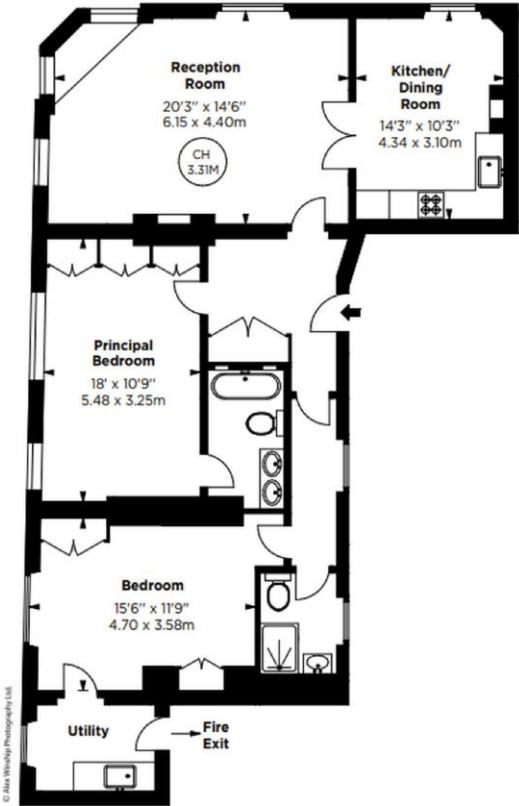
[knightsbridglettingsusers@chestertons.co.uk](mailto:knightsbridglettingsusers@chestertons.co.uk)  
 02072353530  
[chestertons.co.uk](http://chestertons.co.uk)

# Ebury Street, SW1

APPROX. GROSS INTERNAL AREA \*  
1137 Sq Ft - 105.63 Sq M

This floorplan is for GUIDANCE ONLY and NOT FOR VALUATION purposes.

Key :  
CH - Ceiling Height



FIRST FLOOR



Chesterton UK Services Limited trading as Chestertons for themselves and for the vendor of this property whose agents they are, give notice that (i) these particulars do not constitute any part of an offer or contract, (ii) all statements contained within these particulars are made without responsibility on the part of Chestertons or the vendor, (iii) whilst made in good faith, none of the statements contained within these particulars are to be relied upon as a statement or representation of fact, (iv) any intending purchasers must satisfy themselves by inspection or otherwise as to the correctness of each of the statements contained within these particulars, (v) the vendor does not make or give either Chestertons or any person in their employment any authority to make or give representation or warranty whatsoever in relation to this property. Wide angle lenses may be used. ©Copyright Chestertons | Chesterton Global Ltd | Registered Office 40 Connaught Street, Hyde Park, London W2 2AB Registered Company Number 05334580.

