



Lansdown Crescent, Cheltenham, GL50 2LF

£210,000

🛏 1 🚿 1 🚗 1

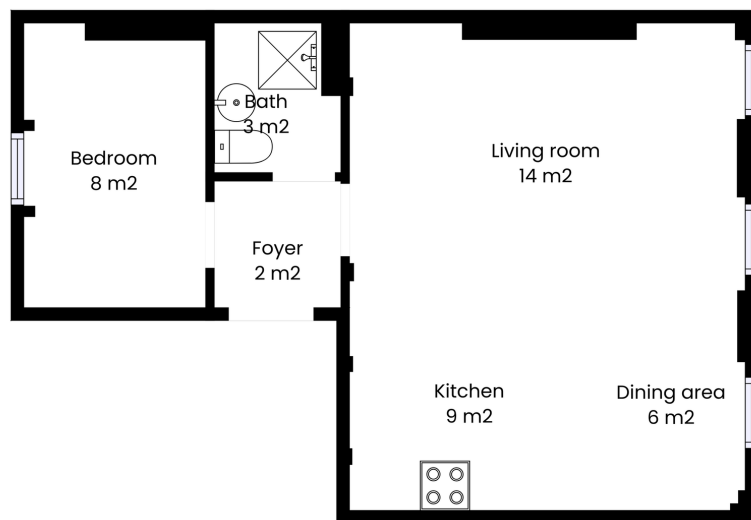


- Grade II listed
- Low service-charge
- Sash windows
- Prime Lansdown
- One double bedroom
- Balcony space
- 495 sq ft
- Long lease

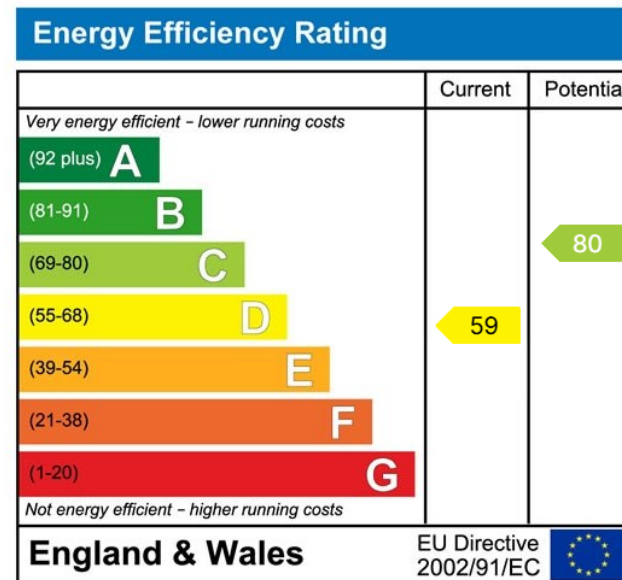


Nestled in sought-after Lansdown within Cheltenham Town, this Grade II listed first-floor apartment blends historic character with contemporary convenience. Offering 495 sq ft of thoughtfully arranged living space, the one-bedroom is ideal for professionals, couples, or investors seeking a stylish town residence. Residents benefit from immediate access to independent shops, cafes, dining, cultural attractions, and excellent transport links.

Leasehold: 956 years. Service charge: £115 pcm. Council Tax: Band A. EPC: D.



Sizes and dimensions are approximate, actual may vary.



Elliot Oliver Sales
 101 Promenade, Cheltenham GL50 1NW
 01242 321091
 www.eosales.co.uk

