



*jordan fishwick*

Overton Lane Whaley Bridge High Peak



## Overton Lane Whaley Bridge High Peak SK23 7GU

£595,000



### The Property

Situated on Overton Lane in the charming town of Whaley Bridge, this exquisite detached house offers a perfect blend of modern living and comfort. As a Barrett built new home, it boasts high-quality finishes and energy-efficient features, making it an ideal choice for those seeking a contemporary lifestyle. The property comprises five generously sized bedrooms, providing ample space for families or those who enjoy hosting guests. With three well-appointed bathrooms, ensuring convenience for families. The design of this home prioritises spacious modern living, allowing for a seamless flow between rooms. Natural light floods the interiors, creating a warm and inviting atmosphere throughout. The property is situated on the fringe of a popular development, offering a sense of community while still providing a tranquil retreat. For those with vehicles, the property includes parking for up to three cars. In summary, this stunning detached home on Overton Lane is a rare find, combining modern amenities with a desirable location in Whaley Bridge. It is an excellent opportunity for anyone looking to invest in a high-quality, energy-efficient home that caters to the needs of contemporary living. Viewings of this property are highly recommended to truly appreciate its potential.




- Barrett Built Home
- Detached Five Bedroom Residence
- Superbly Presented Throughout
- Bright Accommodation
- Open Plan Living, Dining/Kitchen
- Utility Room
- Downstairs W.C
- Low Maintenance Garden
- Garage

**Postcode** SK23 7GU

**EPC Rating** A

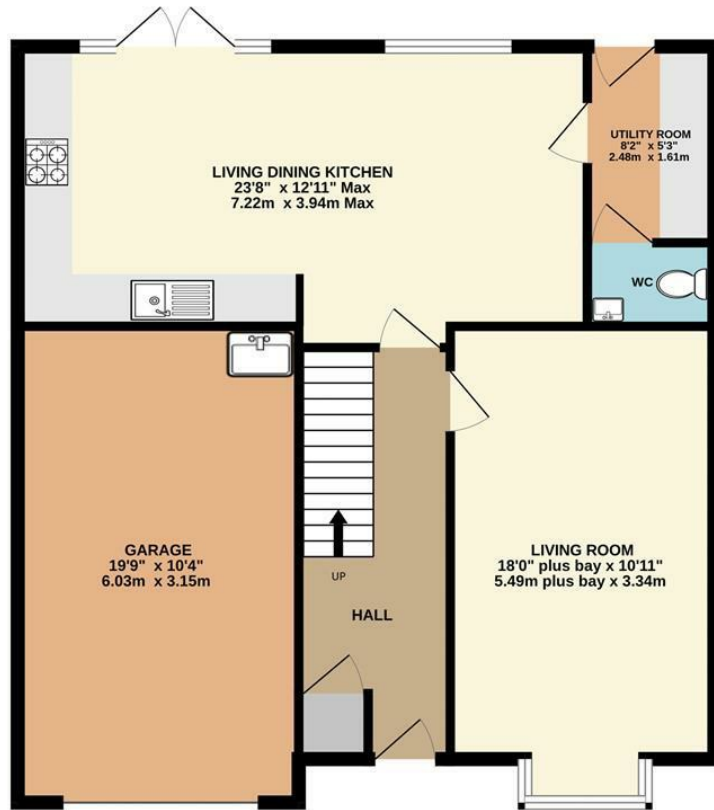
**Local Authority** High Peak

**Council Tax** F

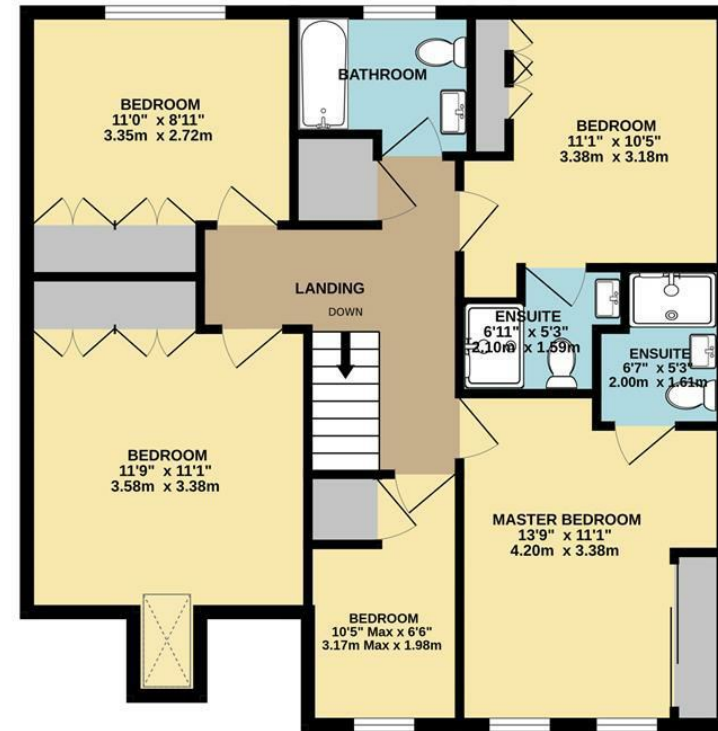
Energy Efficiency Rating		
	Current	Potential
Very energy efficient - lower running costs		
(92 plus) <b>A</b>	<b>93</b>	<b>94</b>
(81-91) <b>B</b>		
(69-80) <b>C</b>		
(55-68) <b>D</b>		
(39-54) <b>E</b>		
(21-38) <b>F</b>		
(1-20) <b>G</b>		
Not energy efficient - higher running costs		
<b>England &amp; Wales</b>	EU Directive 2002/91/EC 	



GROUND FLOOR



1ST FLOOR



Whilst every attempt has been made to ensure the accuracy of the floorplan contained here, measurements of doors, windows, rooms and any other items are approximate and no responsibility is taken for any error, omission or mis-statement. This plan is for illustrative purposes only and should be used as such by any prospective purchaser. The services, systems and appliances shown have not been tested and no guarantee as to their operability or efficiency can be given.  
Made with Metropix ©2026



These particulars are believed to be accurate but they are not guaranteed and do not form a contract. Neither Jordan Fishwick nor the vendor or lessor accept any responsibility in respect of these particulars, which are not intended to be statements or representations of fact and any intending purchaser or lessee must satisfy himself by inspection or otherwise as to the correctness of each of the statements contained in these particulars. Any floorplans on this brochure are for illustrative purposes only and are not necessarily to scale.

Offices at: Chorlton, Didsbury, Disley, Hale, Glossop, Macclesfield, Manchester Deansgate, Manchester Whitworth Street, New Mills, Sale, Wilmslow and Withington

14 Market St, Disley, Cheshire, Stockport SK12 2AA

01663 767878

disley@jordanfishwick.co.uk

www.jordanfishwick.co.uk