



**1 Hares Lane  
Scarisbrick, PR8 5LG, £340,000  
'Subject to Contract'**

This beautifully extended three-bedroom semi-detached bungalow, offering generous and flexible living spaces in a desirable semi-rural location on Hares Lane, Scarisbrick. This pre-war property has been thoughtfully updated, presenting a harmonious blend of classic charm and modern convenience, situated close to open fields for a tranquil lifestyle. With a refitted kitchen, three double bedrooms, and two contemporary bathrooms, this home is designed for comfortable living.

**Early Viewing A Must To Fully Appreciate This Exceptionally Spacious Bungalow.**

12A Anchor Street, Southport, Merseyside PR9 0UT  
01704 512121 F 01704 512122  
sales@christinsley.co.uk www.christinsley.co.uk

*Southport's Estate Agent*

Chris Tinsley Estate Agents is a trading name of ECT Consultancy Services Limited, Company number 05388167, registered in England and Wales

## Entrance Hall

UPVC outer door with etched, double glazed insert. Woodgrain, 'Supreme Layerboard Flooring' extending throughout the bungalow. Useful deep storage cupboard which is plumbed for an automatic washing machine.

## Living Dining Study - 6.83m x 3.23m (22'5" x 10'7" extending to 17' plus study area)

UPVC double glazed window to the front, UPVC double glazed double doors to the deck and rear garden. Woodgrain flooring.

## Fitted Kitchen - 4.19m x 2.9m (13'9" x 9'6")

Single bowl sink unit with mixer tap and adjoining quartz working surfaces incorporating drainer, base units with cupboards and drawers, bin cupboard and wall cupboards. Built in appliances include dishwasher, tall larder fridge and freezer, Zanussi five ring gas hob with cooker hood above and split level electric oven. Utility cupboard housing 'Intergas' gas central heating boiler.

## Inner Hall

Useful storage cupboard

## Bedroom 1 - 4.39m x 3.12m (14'5" x 10'3")

Woodgrain flooring, UPVC double glazed window.

## EnSuite Shower Room - 1.57m x 2.69m (5'2" x 8'10")

Large walk in shower enclosure with thermostatic hand held and waterfall showers. Pedestal wash hand basin, low level WC, part wall tiling, chrome towel rail/radiator, recessed spot lighting and extractor.

## Bedroom 2 - 4.42m x 3.68m (14'6" into bay x 12'1")

Woodgrain laminate flooring, UPVC double glazed window.

## Bedroom 3 - 3m x 3.02m (9'10" x 9'11")

UPVC double glazed window.

## Bathroom - 2.69m x 1.6m (8'10" x 5'3")

White suite including wash hand basin, low level WC, P shaped panelled bath and shower screen with mixer tap and shower attachment. Part wall tiling, part wall boarding, chrome towel rail/radiator, extractor and recessed spot lighting.

## Outside

The bungalow stands in established gardens to both the front and rear. The front garden having lawn and off road car parking and a driveway leads to a substantial L shaped garage at the rear, (measuring 19' by 11'2" extending to 17' and installed with electric light power supply and offering ample storage. The rear garden is enclosed with fencing having lawn, paved patio and decked patio.

## Council Tax

West Lancashire Borough Council Band A

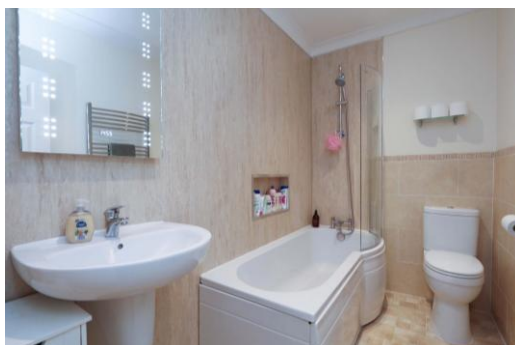
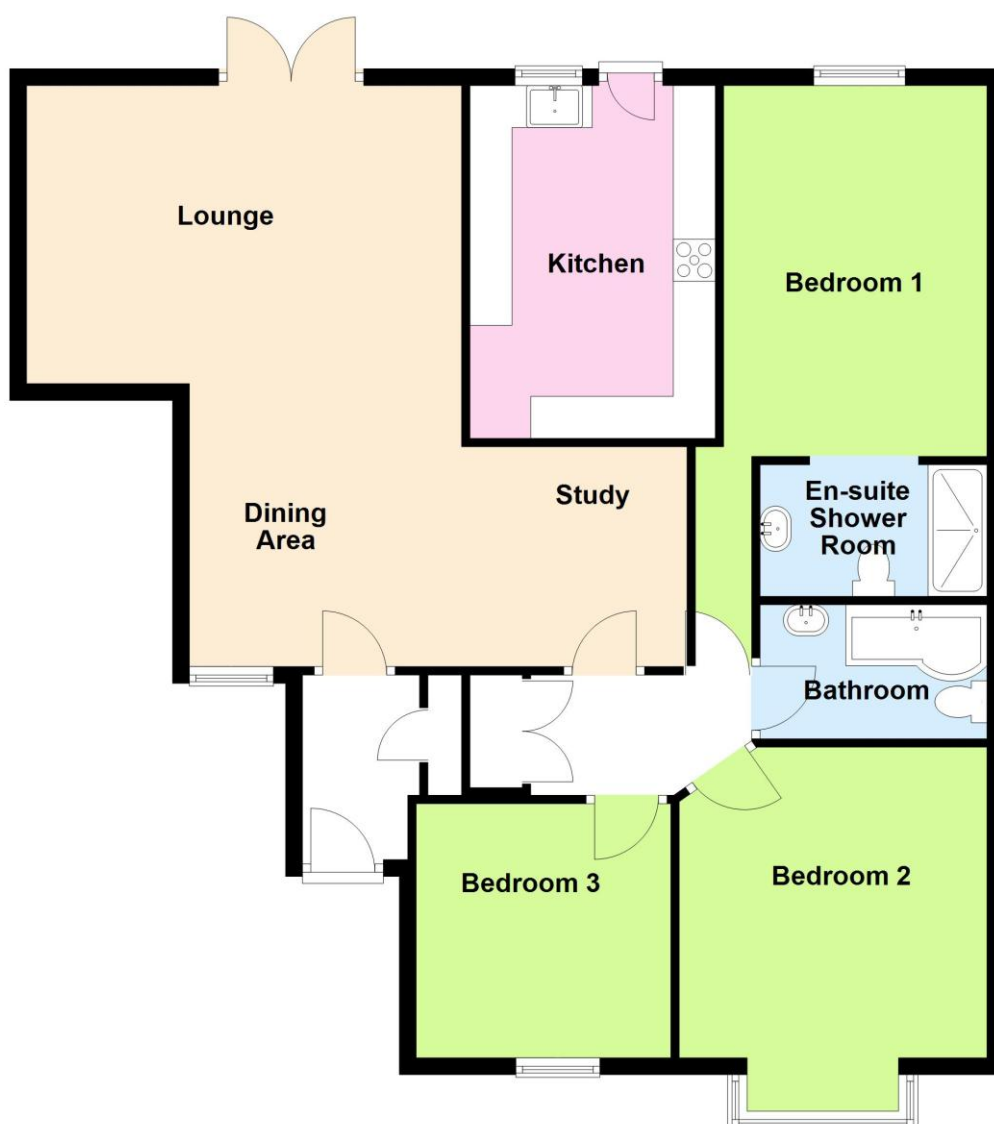
## Tenure

Freehold





## Ground Floor



Chris Tinsley Estate Agents confirm that they have not tested any appliances or services at the property and cannot confirm their working condition or status. Prospective purchasers are advised to carry out their own investigations. The agents also give notice that these details do not constitute an offer or a contract and that no person employed by the agents has any authority to make or give any warranty or representation in relation to this property. All information supplied is believed to be correct but prospective purchasers should satisfy themselves by inspection or otherwise as to the correctness of the statements contained in these particulars. Floor plans are for illustration purpose only and are not to scale.