



96D Estcourt Road

Watford, WD17 2PZ

£1,275 PCM

This well-presented ground floor maisonette offers a large double bedroom and is ideally located on Estcourt Road, within walking distance of Watford Junction and Central Watford. Accessed via secure gates, the property boasts a range of modern features including underfloor heating, double glazing, and integrated appliances. The accommodation comprises a welcoming entrance hallway, a bright and spacious lounge/diner open-plan to a modern fitted kitchen, and a contemporary three-piece bathroom suite.

Please note: There is no parking available with the property. Available mid-May. Early viewing is highly recommended.

Viewing

Please contact our Watford Office on 01923224030 if you wish to arrange a viewing appointment for this property or require further information.

- Ground Floor Maisonette
- Large One Bedroom
- Very Modern
- Minutes from Watford Junction
- Fully Fitted Kitchen
- No Parking
- Double Glazed
- Holding Deposit £294
- Security Deposit £1471
- Council Tax Band C



1



1

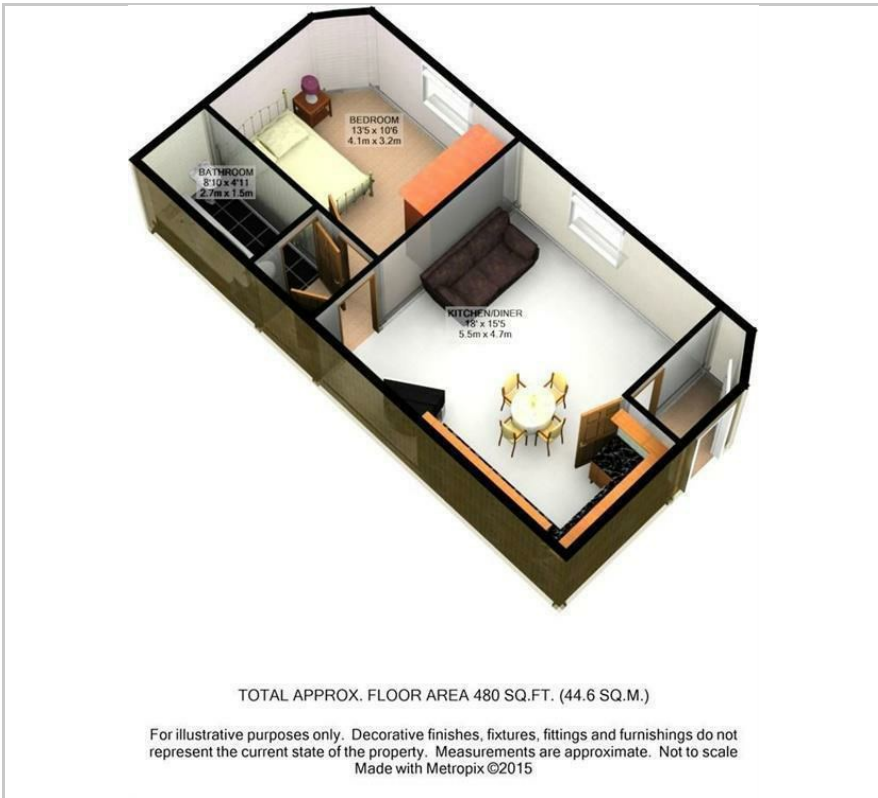


1



B

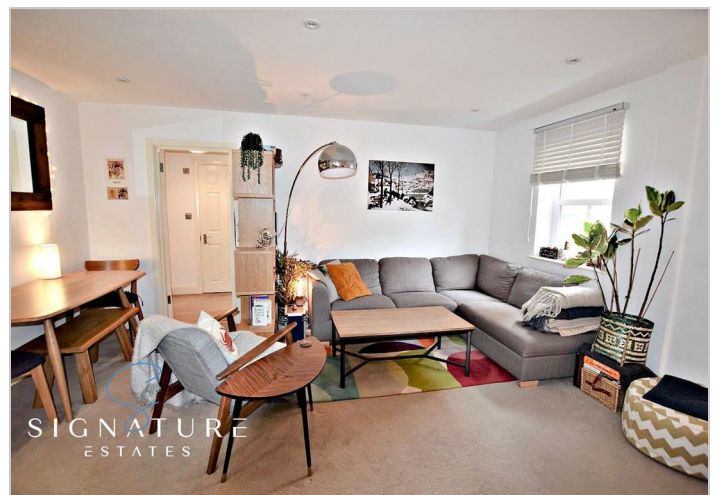
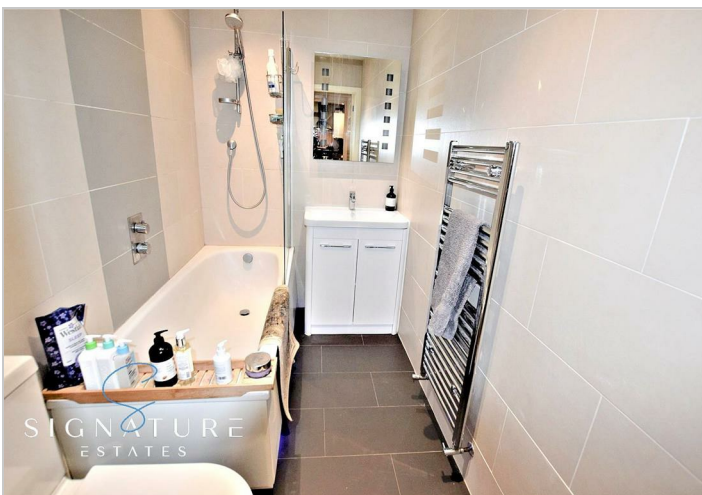
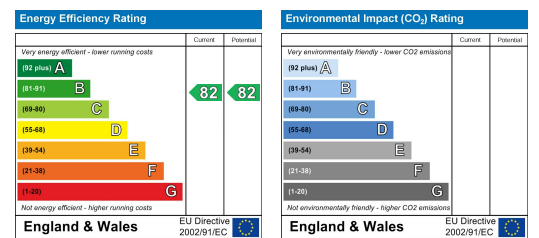
Floor Plan



Area Map



Energy Efficiency Graph



These particulars, whilst believed to be accurate are set out as a general outline only for guidance and do not constitute any part of an offer or contract. Intending purchasers should not rely on them as statements of representation of fact, but must satisfy themselves by inspection or otherwise as to their accuracy. No person in this firm's employment has the authority to make or give any representation or warranty in respect of the property.