

High Street

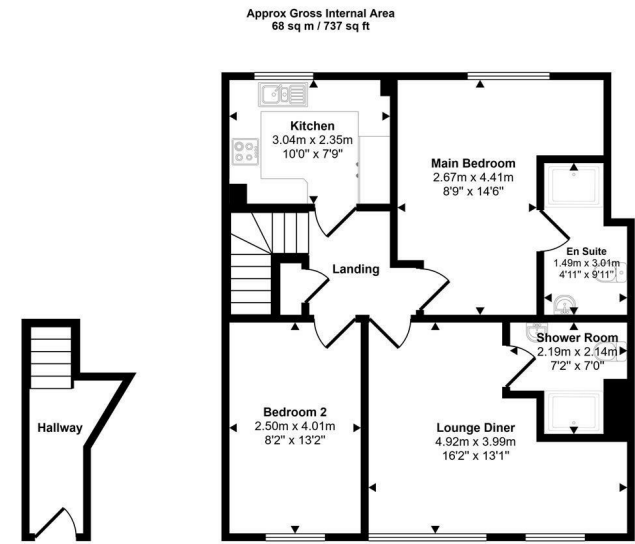
Ruislip • • HA4 7AU
PCM: £1,600 PCM



coopers
est 1986



A well-presented and spacious two-bedroom, two bathroom first floor maisonette ideally situated above shops in the heart of Ruislip High Street, offering excellent access to local amenities, restaurants, cafés, and transport links. Located just a short walk from Ruislip Station, the property benefits from convenient access to both the Metropolitan and Piccadilly lines, making it ideal for commuters travelling into Central London and surrounding areas. Residents will also enjoy the convenience of nearby supermarkets, leisure facilities, and green open spaces.



Ground Floor
Approx 4 sq m / 46 sq ft

First Floor
Approx 64 sq m / 691 sq ft

This floorplan is only for illustrative purposes and is not to scale. Measurements of rooms, doors, windows, and any items are approximate and no responsibility is taken for any error, omission or mis-statement. Icons of items such as bathroom suites are representations only and may not look like the real items. Made with Made Snappy 360.



Two Bedroom First Floor Maisonette

Two Bathrooms

Fantastic Condition

Modern Fitted Kitchen

High Street Location

Walking Distance To Ruislip Station

Metropolitan/Piccadilly Lines

Front Access

Available Date

23rd May 2026

coopers
est 1986

01895 625 625

**126-128 High Street, Ruislip,
Middlesex, HA4 8LL**

rl@coopersresidential.co.uk

CoopersResidential.co.uk

Energy Efficiency Rating		Environmental Impact (CO ₂) Rating	
Current	Potential	Current	Potential
A	A	A	A
B	B	B	B
C	C	C	C
D	D	D	D
E	E	E	E
F	F	F	F
G	G	G	G

England & Wales EU Directive 2002/91/EC

Important Notice: These particulars, whilst believed to be accurate are set out as a general outline only for guidance and do not constitute any part of an offer or contract. Intending purchasers should not rely on them as statements or representation of fact, but must satisfy themselves by inspection or otherwise has the authority to make or give any representation or warranty in respect of the property.