

Property ref: 118082



# Verto, Reading, RG1 3FS

£1,850 PCM



An executive two double bedroom apartment situated on eight floor in a sought after corner plot position. Property benefits from being furnished

- Two double bedrooms master with en-suite

to a high standard with a private balcony over the river.

Reading Borough Council Tax Band D.

Water supply: MAINS

Drainage info: MAINS

Electricity supply: MAINS

Broadband/Mobile Info: Connections available. For an indication of specific speeds and supply of Broadband and Mobile, we advise applicants go to the Ofcom website Broadband and Mobile Coverage Checker.

- Fully furnished to a high standard
- Private balcony over the river
- No Parking; EPC rating B
- Central location; Electric heating
- Managed by HASLAMs

### **Available 08/06/2026**

\*Fees For Assured Shorthold Tenancies: when you rent a property from us you will be required to pay a sum equivalent to one weeks' rent for a holding deposit. Upon successful application, this amount will be off set against your first months' rent. You will also be required to pay a security deposit equivalent to 5 weeks' rent which will be held and protected in line with Deposit legislation. For more information about our fees please visit: [www.haslams.net](http://www.haslams.net)

Fees for all other tenancies (Non Housing Act Tenancies / Company Lets): when you rent a property from us we will charge you a one-off fee per property. This charge is the equivalent of 15 days of the monthly rental charge (+VAT) with a minimum fee of £450 (inc.VAT) up to a maximum of £650 (inc.VAT). Other fees may apply depending on your circumstances.

---

**0118 960 1055**

**[lettings@haslams.net](mailto:lettings@haslams.net) [www.haslams.net](http://www.haslams.net)**

**Haslams Estate Agents Ltd, 159 Friar Street, Reading, Berkshire, RG1 1HE**

---



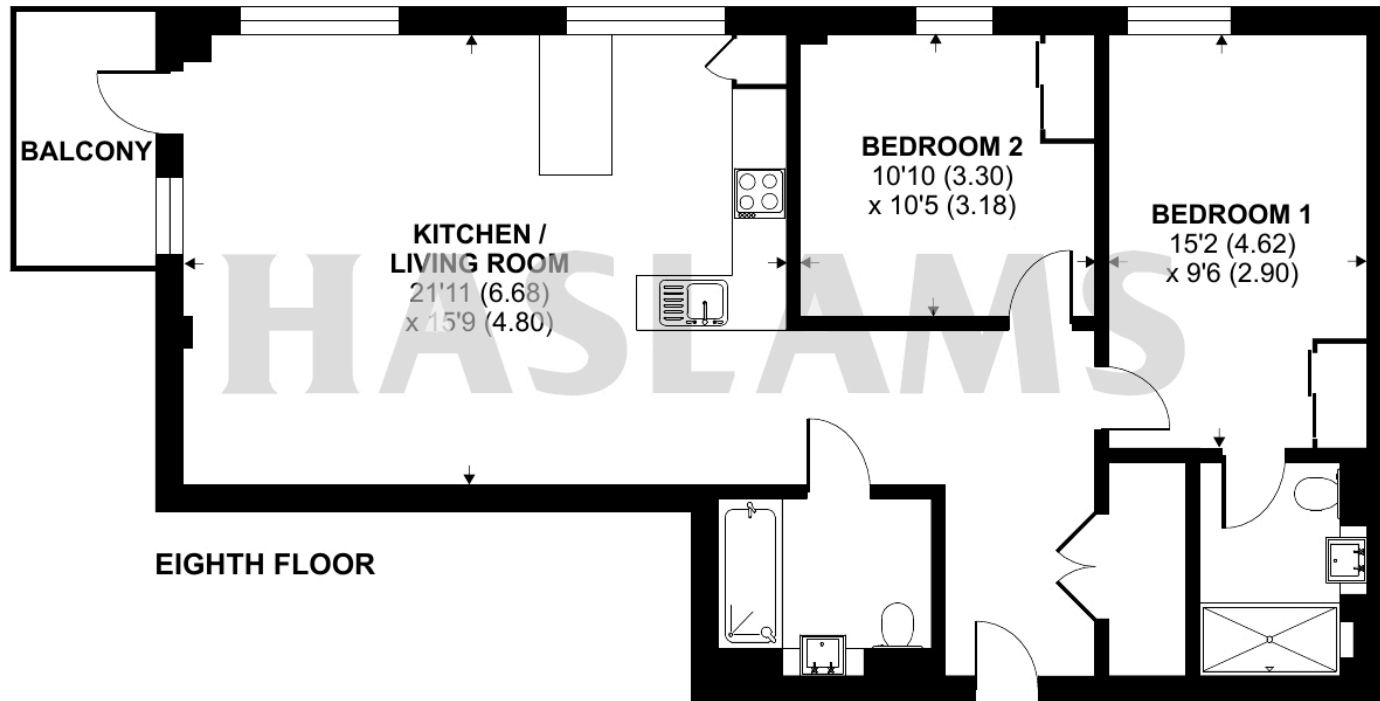




# Kings Road, Reading, RG1

Approximate Area = 884 sq ft / 82.1 sq m

For identification only - Not to scale





Floor plan produced in accordance with RICS Property Measurement Standards incorporating International Property Measurement Standards (IPMS2 Residential). © n1che.com 2024.  
Produced for Haslams. REF: 1122799