



Jordan fishwick

44 Derby Road, M14 6UX
Guide Price £2,500 Per Month



Derby Road Fallowfield M14 6UX

£2,500 Per Month

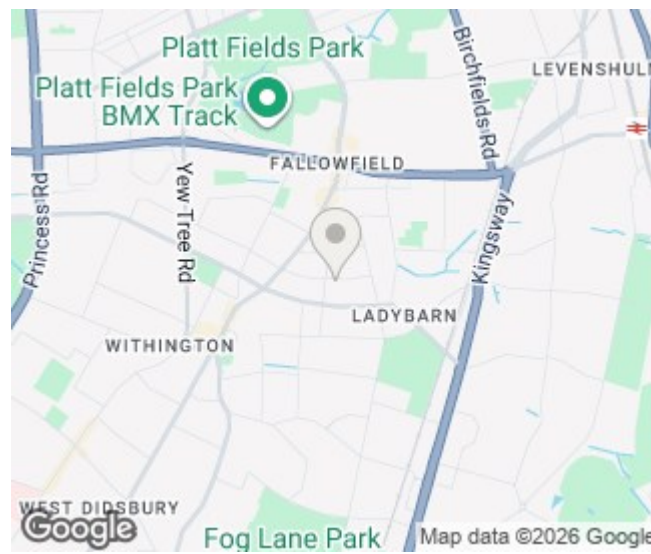


The Property

*** AVAILABLE 1st JULY 2026 *** STUDENT HOME *** HALF PRICE RENT FOR JULY *** A great sized five double bedroom semi-detached student home for the academic year 2026/27. The property has the following features; two vast sized ground floor double bedrooms, large open plan lounge / diner / kitchen with ample cupboard space and white goods. To the first floor a further three double rooms, a smaller study room, bathroom and separate shower room. Furnished. Half rent July only for no occupancy. To the outside is driveway parking and a garden. Contact our Didsbury office to arrange a viewing.

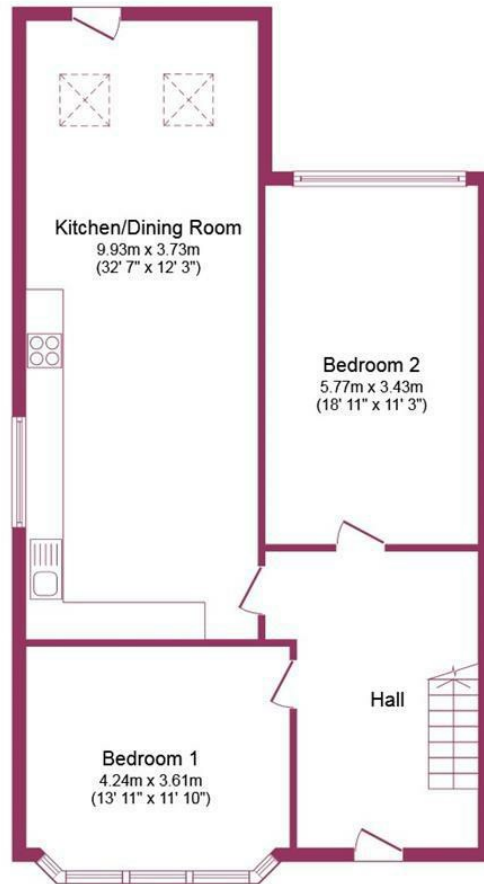
EPC Rating - C // Council Tax Band D

- Available July 2026
- £500.00 PP PCM
- Five Double Bedrooms
- Two Bathrooms
- Student Property
- Garden & Parking
- Fully Furnished
- Half price rent July
- Council Tax Band D
- EPC Rating - C



Energy Efficiency Rating		
	Current	Potential
Very energy efficient - lower running costs		
(92 plus) A		
(81-91) B		82
(69-80) C	69	
(55-68) D		
(39-54) E		
(21-38) F		
(1-20) G		
Not energy efficient - higher running costs		
England & Wales	EU Directive 2002/91/EC	





Ground Floor



First Floor

This Floor Plan is for illustration purposes only and may not be representative of the property. The position and size of doors, windows and other features are approximate. Unauthorized reproduction prohibited. © PropertyBOX



These particulars are believed to be accurate but they are not guaranteed and do not form a contract. Neither Jordan Fishwick nor the vendor or lessor accept any responsibility in respect of these particulars, which are not intended to be statements or representations of fact and any intending purchaser or lessee must satisfy himself by inspection or otherwise as to the correctness of each of the statements contained in these particulars. Any floorplans on this brochure are for illustrative purposes only and are not necessarily to scale.

Offices at: Chorlton, Didsbury, Disley, Hale, Glossop, Macclesfield, Manchester Deansgate, Manchester Whitworth Street, New Mills, Sale, Wilmslow and Withington