



**Guide Price**  
**£375,000**

**Freehold**

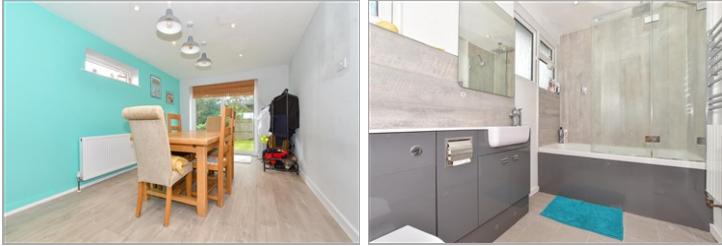
3x  1x  1x 

**St. Mildred's Court,  
Walmer, Deal, Kent,  
CT14**

**OVER 60?**

Secure this property  
for up to **59% less!**

*Wards*  
Helping you move forwards



## Main features

- Well positioned within a quiet and desirable close
- Extensive off road parking to front
- In good condition and ready to move into
- Generous side extension creating large kitchen/dining area
- Within a short distance to seafront and local amenities

## Accommodation

### GROUND FLOOR

Entrance Hallway  
 Kitchen: 18'1 x 9'6 (5.52m x 2.90m)  
 Dining area : 22'4 x 9'10 (6.81m x 3.00m)  
 Store - used as study : 5'7 x 4'7 (1.70m x 1.40m)  
 Lounge : 19'0 x 10'11 (5.80m x 3.33m)  
 Utility : 11'10 x 7'6 (3.61m x 2.29m)  
 Cloakroom

### FIRST FLOOR

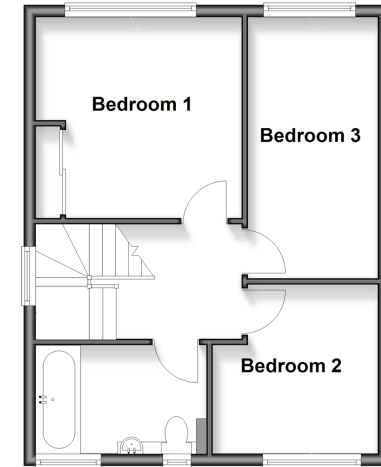
Landing  
 Bedroom 1: 15'3 x 7'4 (4.65m x 2.24m)  
 Bedroom 3: 9'5 x 8'8 (2.87m x 2.64m)  
 Bedroom 2: 11'5 x 11'4 (3.48m x 3.46m)  
 Bathroom

### OUTSIDE

Driveway  
 Front and Rear Gardens

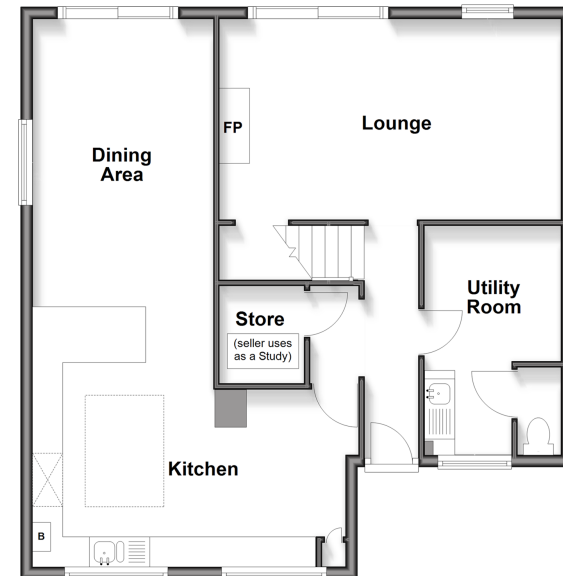
### First Floor

Approx. 41.0 sq. metres (441.7 sq. feet)



### Ground Floor

Approx. 73.1 sq. metres (786.7 sq. feet)



**Call Deal - 01304 361420 ■ [wardsof Kent.co.uk](http://wardsof Kent.co.uk)**

- Legal advice should be taken to verify fixtures/fittings, planning, alterations and/or lease details
- Appliances & services are untested, dimensions are approximate and floor plans are not to scale
- Through a Homewise Home For Life Plan people aged 60+ can secure this property for up to 50% less, by purchasing a Lifetime Lease.



10630065/20250926/WSM/WSM