



Connells

Walton Street
Aylesbury



Property Description

Stylish Two-Bedroom Penthouse Apartment
in Prime Aylesbury Location.

Discover elevated living in this beautifully presented two-bedroom penthouse apartment, ideally situated within walking distance of Aylesbury town centre, train station, and bus links—perfect for commuters and town explorers alike.

Step into a welcoming entrance hall with generous storage space, ideal for coats, shoes, and everyday essentials. The master bedroom offers built-in wardrobes and a sleek en-suite shower room, while the second double bedroom also features ample storage and is served by a spacious family bathroom with a full-size bath and overhead shower.

The heart of the home is a bright and airy living room that flows seamlessly into a contemporary kitchen, complete with integrated fridge-freezer and slimline dishwasher—designed for both style and practicality.

Additional highlights include :

Lift access to all floors

, secure gated parking with one allocated

space and access to a stunning communal rooftop terrace with panoramic views

. This penthouse combines comfort, convenience, and modern living in one of Aylesbury's most sought-after locations. Early viewing is highly recommended.

Entrance Hall

Door to side
Laminate underfoot
Storage cupboard

Lounge

10' 2" max x 14' 4" max (3.10m max x 4.37m max)
Window to front
Carpet underfoot
Radiator

Kitchen

17' 8" max x 8' 11" max (5.38m max x 2.72m max)
Window to front
Wall and base units
Integrated fridge/freezer and slim line dishwasher
Splashback tiling
Radiator
Laminate underfoot

Bedroom One

16' 5" max x 12' 4" max (5.00m max x 3.76m max)

Window to front

Radiator

Laminate underfoot

Built in wardrobe

En-Suite

WC,

Wash hand basin

Extractor fan

Towel radiator

Shaving point

Tiling underfoot

Part tiling

Shower cubicle

Bedroom Two

8' 10" max x 13' 3" max (2.69m max x 4.04m max)

Window to front

Carpet underfoot

Radiator

Built in wardrobe

Bathroom

WC

Wash hand basin

Shaving point

Bath with shower

Towel radiator

Extractor fan

Tiling underfoot

Part tiling

Rear Garden

Communal

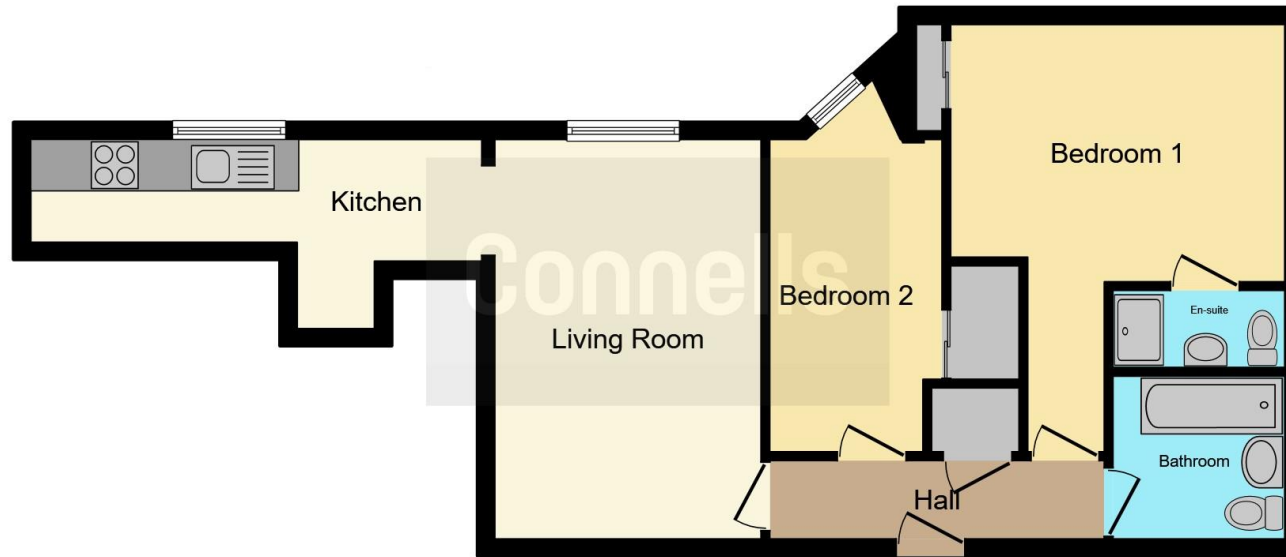
Parking

Allocated (BAY 34)









This floor plan is for illustrative purposes only. It is not drawn to scale. Any measurements, floor areas (including any total floor area), openings and orientation are approximate. No details are guaranteed, they cannot be relied upon for any purpose and they do not form part of any agreement. No liability is taken for any error, omission or misstatement. A party must rely upon its own inspection(s). Powered by www.focalagent.com

To view this property please contact Connells on

T 01296 395 111
E aylesbury@connells.co.uk

2 Temple Street
 AYLESBURY HP20 2RH

EPC Rating: C Council Tax
 Band: C

Service Charge:
 1560.56

Ground Rent:
 300.00

Tenure: Leasehold

view this property online connells.co.uk/Property/ALS312391

This is a Leasehold property with details as follows; Term of Lease 125 years from 01 Dec 2015. Should you require further information please contact the branch. Please Note additional fees could be incurred for items such as



1. MONEY LAUNDERING REGULATIONS Intending purchasers will be asked to produce identification documentation at a later stage and we would ask for your co-operation in order that there will be no delay in agreeing the sale. 2. These particulars do not constitute part or all of an offer or contract. 3. The measurements indicated are supplied for guidance only and as such must be considered incorrect. Potential buyers are advised to recheck measurements before committing to any expense. 4. We have not tested any apparatus, equipment, fixtures, fittings or services and it is in the buyers interest to check the working condition of any appliances.

Connells Residential is registered in England and Wales under company number 1489613, Registered Office is Cumbria House, 16-20 Hockliffe Street, Leighton Buzzard, Bedfordshire, LU7 1GN. VAT Registration Number is 500 2481 05.

See all our properties at www.connells.co.uk | www.rightmove.co.uk | www.zoopla.co.uk

Property Ref: ALS312391 - 0005