



WELLINGTON GARDENS, SE7

£450,000

Flat
Two bedrooms
One bathroom
Private garden
Private parking
Energy rating: D

@marshandparsons
marshandparsons.co.uk

MARSH &
PARSONS



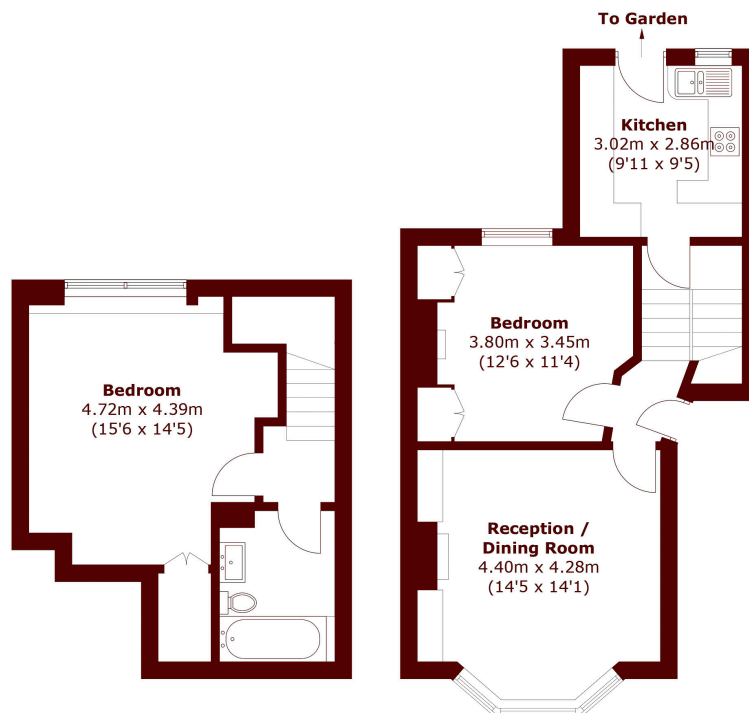
ABOUT THE PROPERTY

Exceptional two double bedroom split-level conversion flat with private parking and a large garden. Features include a stunning bay-fronted living/dining room with shutters, fireplace and wood floors, a double bedroom with fitted wardrobes, a well-fitted kitchen, and a lower ground floor double bedroom with storage and spacious bathroom. Rear garden with patio, side access, artificial lawn, and shed.

Charlton station, shops, and buses to North Greenwich tube station, Blackheath and Greenwich, are all just around the corner.



STEP INSIDE WELLINGTON GARDENS



Lower Ground Floor

Ground Floor

Total area (approx.): 76.1 sq. m (819.1 sq. ft)

Charlton
020 8293 0454

Energy Rating: D We aim to make our particulars both accurate and reliable. However, they are not guaranteed; nor do they form part of an offer or contract. If you require clarification on any points then please contact us, especially if you're traveling some distance to view. Please note that appliances and heating systems have not been tested and therefore no warranties can be given as to their good working order

**MARSH &
PARSONS**