



**OVER 60?**

Secure this property  
for up to **59% less!**

**Price**

**£90,000**

**Leasehold**

2x  1x  1x 

**Rostrevor Court,  
Sandown Road,  
Sandown, Isle of Wight,  
PO36**

**Pittis**   
Helping you move forwards



## Main features

- Chain free ground floor purpose built apartment
- In need of modernisation throughout
- Cash buyers only due to short term remaining on lease
- Allocated parking space to rear
- Beautiful Cliff Path walks only seconds from the apartment

## Accommodation

### GROUND FLOOR

#### Hallway

Lounge: 13'9 x 13'7 (4.19m x 4.14m)

Kitchen: 9'8 x 8'0 (2.95m x 2.44m)

Bedroom 1: 12'2 x 10'1 (3.71m x 3.08m)

Bedroom 2: 11'4 x 7'11 (3.46m x 2.41m)

#### Shower Room

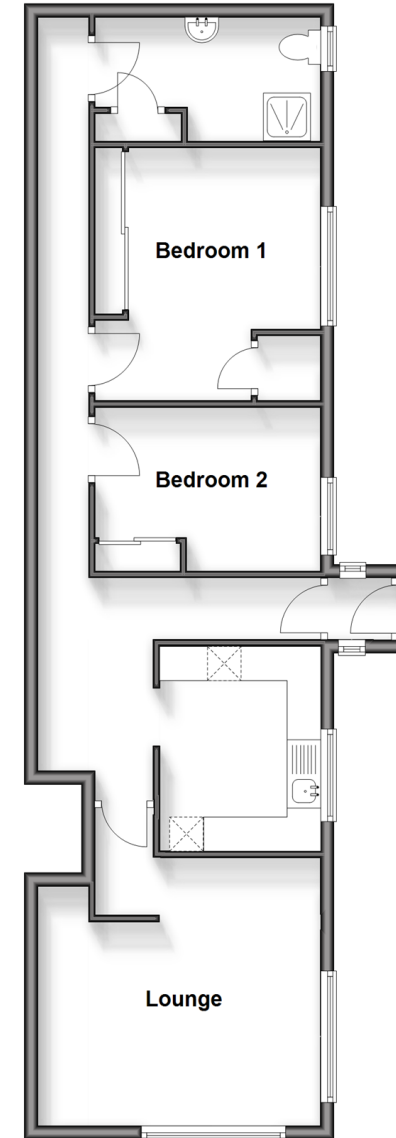
### OUTSIDE

Front Patio Area

Allocated Parking

## Ground Floor

Approx. 67.8 sq. metres (730.2 sq. feet)



**Call Sandown - 01983 407444 ■ [pittis.co.uk](http://pittis.co.uk)**

- Legal advice should be taken to verify fixtures/fittings, planning, alterations and/or lease details
- Appliances & services are untested, dimensions are approximate and floor plans are not to scale
- Through a Homewise Home For Life Plan people aged 60+ can secure this property for up to 59% less, by purchasing a Lifetime Lease.



60521128/20250603/BB/NR