



Jordan fishwick

Apt, 1, 32 Salisbury Road, M21 0SL
£1,400 Per Calendar Month



Salisbury Road Chorlton M21 0SL

£1,400 Per Calendar Month



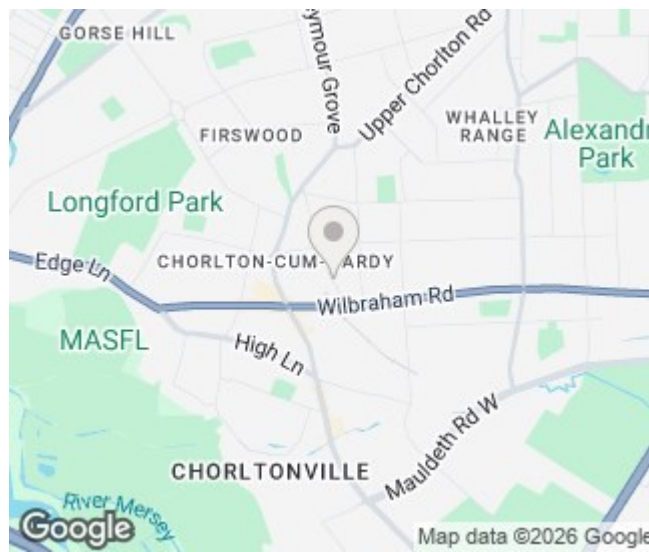
The Property


**** AVAILABLE NOW **** We are delighted to offer this stunning Three Bedroom Apartment which is one of four Apartments set within a Stunning Period conversion. The property is located close to the Chorlton Centre and on a highly regarded road. The apartment is on the lower ground floor and offers a large open plan Lounge & modern fitted Kitchen with Integrated appliances, two double bedrooms, one single/study, bathroom and secure off road parking. The finish and specification of the apartment is to the highest standard.

The development benefits from a large communal garden to the front, rear and side.

***** To arrange a viewing call 0161 860 4444 *****

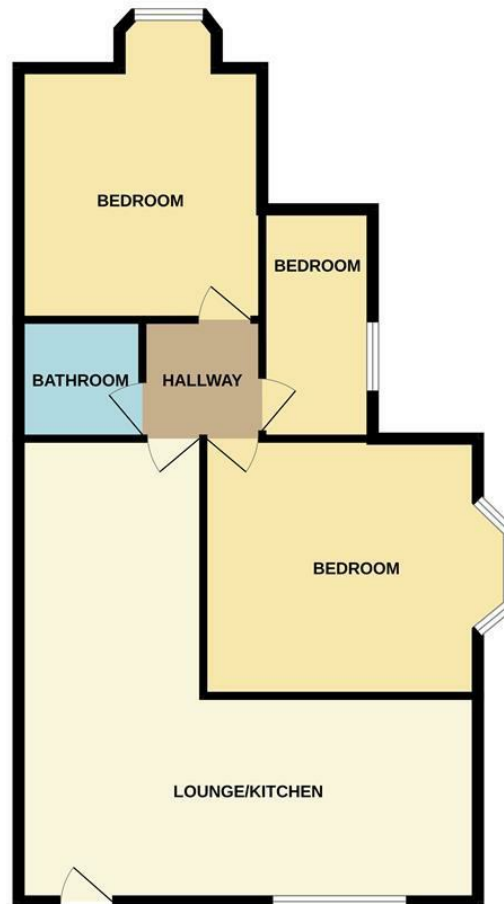
- Council Tax B - EPC C
- 3 Bedrooms
- Off Road secure parking
- Unfurnished
- Stunning Period conversion
- Highly regarded Road
- Available Now



Energy Efficiency Rating		
	Current	Potential
Very energy efficient - lower running costs		
(92 plus) A		
(81-91) B		
(69-80) C	69	79
(55-68) D		
(39-54) E		
(21-38) F		
(1-20) G		
Not energy efficient - higher running costs		
England & Wales	EU Directive 2002/91/EC 	



BASEMENT



Whilst every attempt has been made to ensure the accuracy of the floorplan contained here, measurements of doors, windows, rooms and any other items are approximate and no responsibility is taken for any error, omission or mis-statement. This plan is for illustrative purposes only and should be used as such by any prospective purchaser. The services, systems and appliances shown have not been tested and no guarantee as to their operability or efficiency can be given.
Made with Metropix ©2024



These particulars are believed to be accurate but they are not guaranteed and do not form a contract. Neither Jordan Fishwick nor the vendor or lessor accept any responsibility in respect of these particulars, which are not intended to be statements or representations of fact and any intending purchaser or lessee must satisfy himself by inspection or otherwise as to the correctness of each of the statements contained in these particulars. Any floorplans on this brochure are for illustrative purposes only and are not necessarily to scale.

Offices at: Offices at Chorlton, Didsbury, Disley, Hale, Glossop, Macclesfield, Manchester Deansgate, Manchester Whitworth Street, New Mills, Sale, Wilmslow and Withington