

Payton
Jewell
Caines



21a Depot Road, Cwmavon – SA12 9BA
Port Talbot

Offers Over £140,000



21a Depot Road

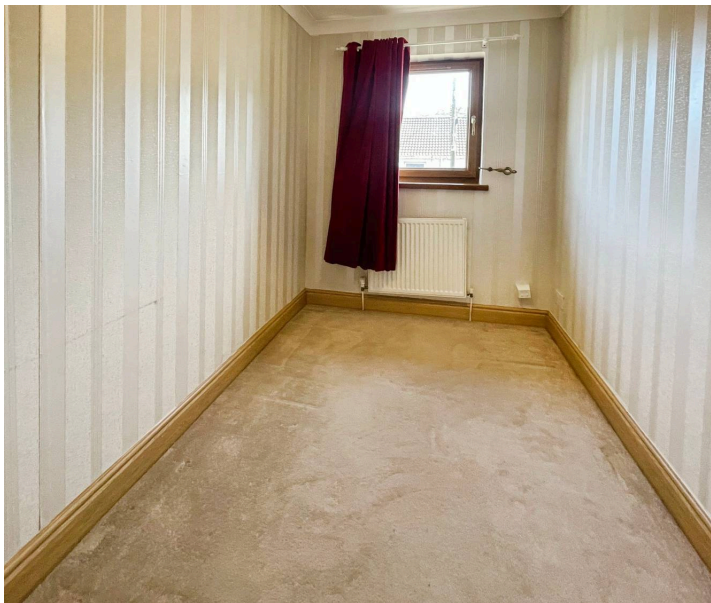
Cwmavon, Port Talbot

Introducing this modern style three bedroom mid terrace house set in the popular village of Cwmavon, comprising lounge, downstairs WC, kitchen with fitted appliances, three bedrooms, upstairs shower room, rear garden with off road parking. Close to local school and amenities Viewing highly recommended to fully appreciate this home suitable for first and second time buyers.





- 3 Bed Mid Terrace House
- Downstairs WC
- First Floor Shower Room
- Rear Garden With Parking
- Gas Central Heating



Entrance

Via PVCu double glazed opaque door with overhead canopy leading into the lounge.

Lounge

4.28m x 4.31m (14' 1" x 14' 2") Papered and emulsioned walls, PVCu double glazed window overlooking the front, radiator, stairs leading to first floor and laminate flooring. Door to kitchen. Door to WC.

WC

Part papered/part tiled walls, radiator and laminate flooring. Two piece suite comprising low level WC and pedestal wash hand basin.

Kitchen

3.61m x 4.31m (11' 10" x 14' 2") Emulsioned walls with one papered feature wall, PVCu double glazed opaque door leading to the rear of the property, PVCu double glazed opaque window overlooking the rear, wall mounted combination boiler, radiator and vinyl tiled flooring. A range of wall and base units with complementary work surfaces. Integrated electric hob, electric oven and cooker hood. Storage cupboard. Space for automatic washing machine. Stainless steel one and a half bowl sink with swan neck mixer tap.

First Floor Landing

1.84m x 3.20m (6' 0" x 10' 6") Via stairs. Coved ceiling, access to loft, wired smoke alarm, emulsioned walls and fitted carpet

Bedroom 1

2.39m x 4.29m (7' 10" x 14' 1") Coved ceiling, PVCu double glazed window overlooking the front of the property, radiator, emulsioned walls with one feature painted wall and fitted carpet.

Bedroom 2

1.84m x 3.62m (6' 0" x 11' 11") PVCu double glazed window overlooking the rear of the property, radiator, emulsioned walls with one papered feature wall and fitted carpet.

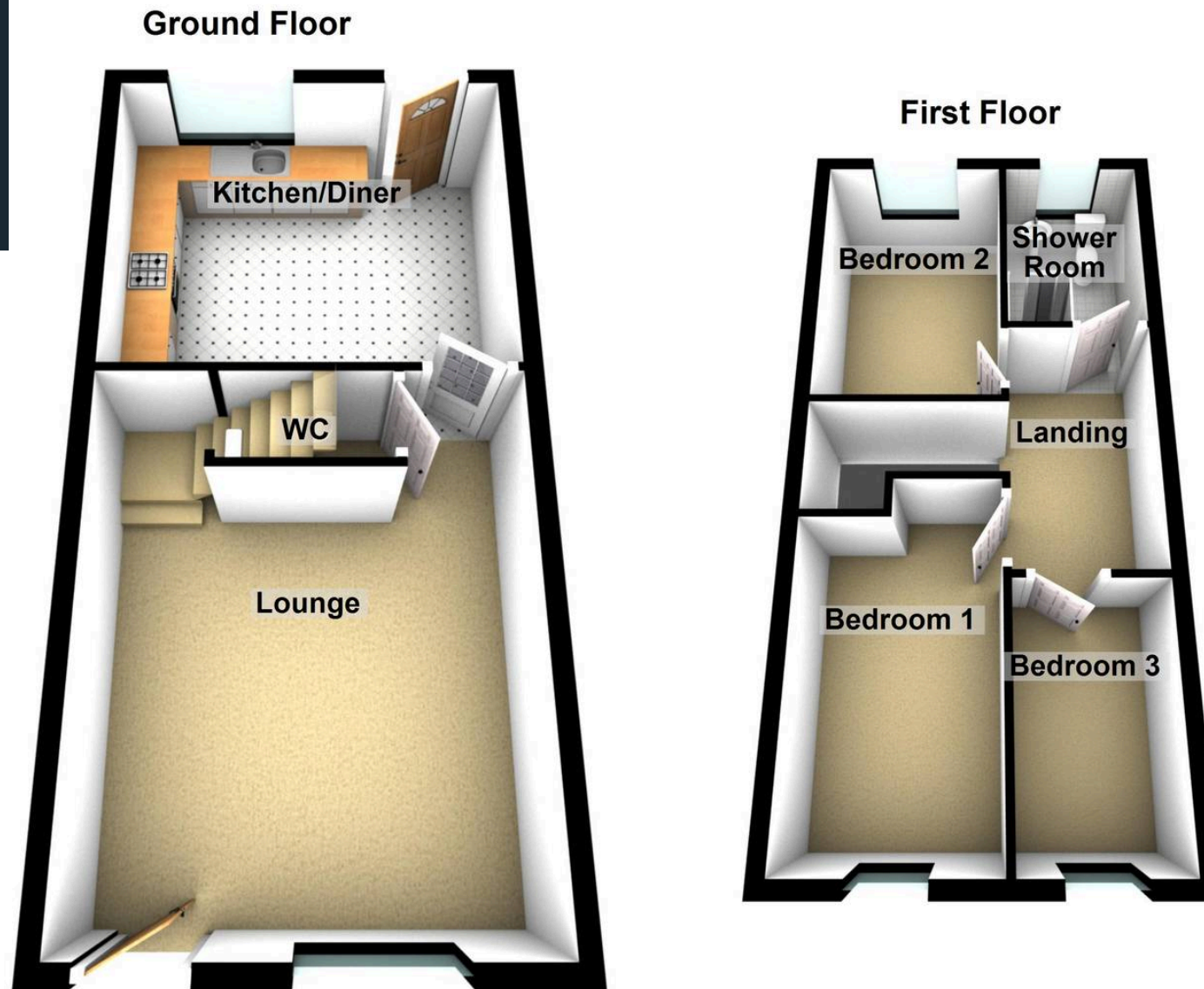
Bedroom 3

1.80m x 3.07m (5' 11" x 10' 1") Coved ceiling, PVCu double glazed window overlooking the front of the property, radiator, papered walls and fitted carpet.

Shower Room

1.81m x 2.54m (5' 11" x 8' 4") PVCu opaque double glazed window overlooking the rear of the property, tiled walls, radiator and vinyl flooring. Three piece suite comprising low level WC, vanity sink unit with mixer tap, shower cubicle with mains power shower and glass shower screen





21a Depot Road, Cwmavon

Payton Jewell Caines

Payton Jewell Caines, 53 Station Road – SA13 1NW

01639891268 • porttalbot@pjchomes.co.uk • pjchomes.co.uk/

These property details are provided as a general guide only. Whilst we aim for accuracy, measurements, photographs, floor plans, and descriptions should not be relied upon as statements of fact. Buyers should carry out their own checks regarding the property, services, and specifications. Fixtures and fittings are only included if specifically stated. Appliances and services have not been tested.