



Glebe Barn The Street, Mersham

Offers in Region of £595,000

Skippers

Glebe Barn The Street

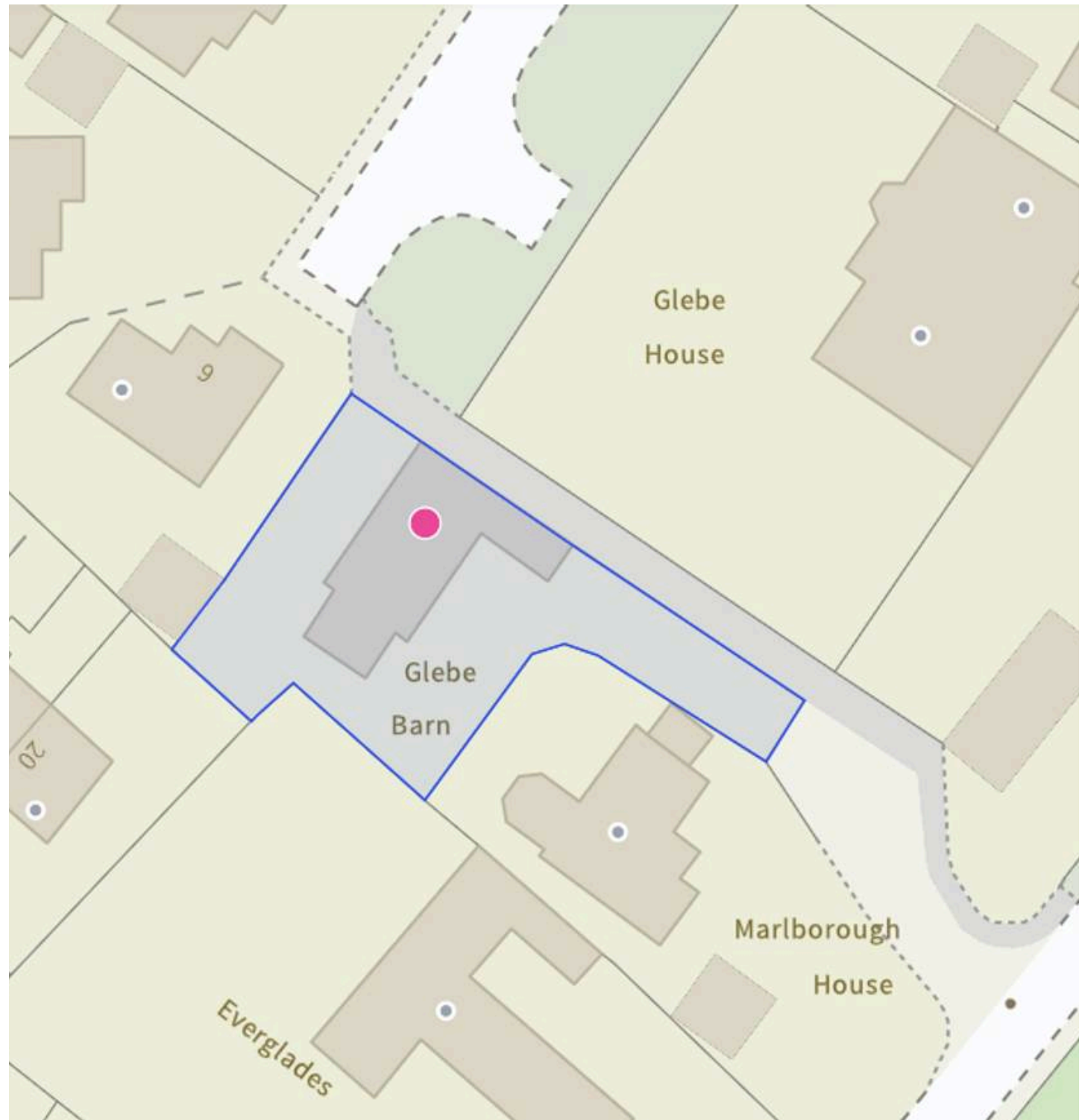
Mersham, Ashford

Glebae Barn is a secluded three-bed detached barn conversion in Mersham, with modern interiors, landscaped garden, garage, and easy access to village amenities and transport links.

Council Tax band: G

Tenure: Freehold

- Glebe Barn is a late 1990's Barn conversion offering plenty of character and charm
- Tucked Away in Secluded Mersham Village
Location which is a vibrant area with a wonderful community feel
- Three Bedrooms
- Modern Bathroom and Additional Shower Room
- Impressive Lounge with vaulted ceiling, log burner and mezzanine floor leading to Study/office/reading area
- Modern fitted Kitchen
- Dining Room
- Attached Single Garage with Driveway Parking providing parking for approx. 4 vehicles
- Landscaped Gardens
- Easy Access to A20 leading to Ashford, Hythe/Folkestone and surrounding villages
- Well Regarded Primary School



Dining Room

14' 9" x 13' 0" (4.50m x 3.96m)

Accessed via front door with windows to front, stripped wooden floor, exposed beams and brickwork to walls, coat storage cupboard. Doors through to inner hall, kitchen and bedroom with en-suite.

Living Room

16' 11" x 15' 0" (5.16m x 4.57m)

Vaulted ceiling, log burner, exposed beams and 2 windows to front with additional window the side. Stripped wooden floorboards, exposed brick and stone plinth to walls. Stairs to mezzanine floor/study area.

Study Area/Mezzanine Area

17' 3" x 7' 1" (5.26m x 2.16m)

Stripped wooden floorboards, overlooking living room with exposed beams.

Kitchen

19' 2" x 6' 7" (5.84m x 2.01m)

Range of white shaker style cupboards and drawers beneath work surfaces with 1½ bowl resin sink unit with mixer taps, wall mounted display and storage cabinets, Neff ceramic hob and oven with concealed extractor above. Integrated dishwasher and fridge freezer. Stable door to front. 2 x windows to side with tiled flooring, breakfast bar.

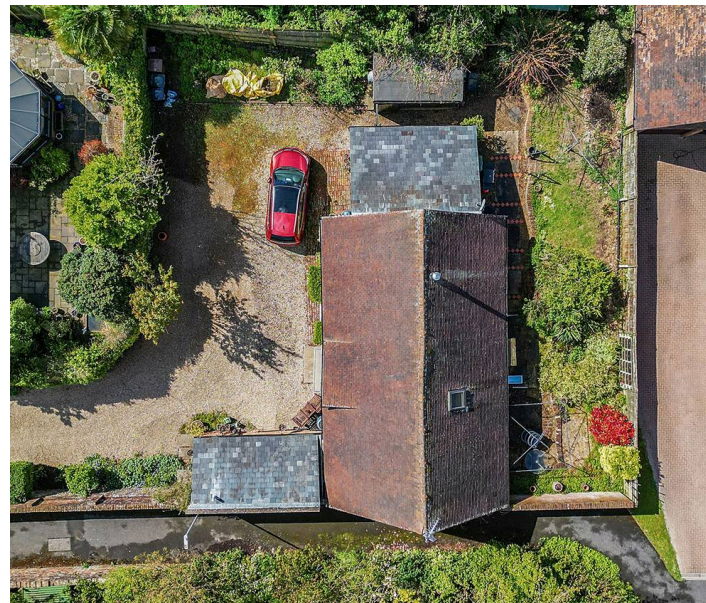
Bedroom

17' 10" x 9' 3" (5.44m x 2.82m)

Exposed beams, window overlooking the rear garden. Latched door leading to en-suite bathroom.

En-suite Bathroom

White suite comprising panelled bath with mixer tap & shower attachment and shower screen. low level W.C. Pedestal wash basin with vanity storage under, tiled flooring and walls.





Inner Hallway

With stairs leading to first floor, doors to rear garden, bedroom and shower room.

Bedroom

17' 0" x 8' 4" (5.18m x 2.54m)

Exposed beams, range of built in wardrobes, windows overlooking rear garden.

Shower Room

White suite comprising low level wc, wash hand basin with mixer tap and vanity storage under, tiled shower cubicle, heated towel radiator, tiled flooring and partially tiled walls.

Bedroom

22' 8" x 18' 0" (6.91m x 5.49m)

Arranged over two levels with a large dressing area to the lower level with possibility for bedroom area and high vaulted ceiling. There is a further short flight of stairs to the bedroom with beamed vaulted ceiling with apex windows to side.



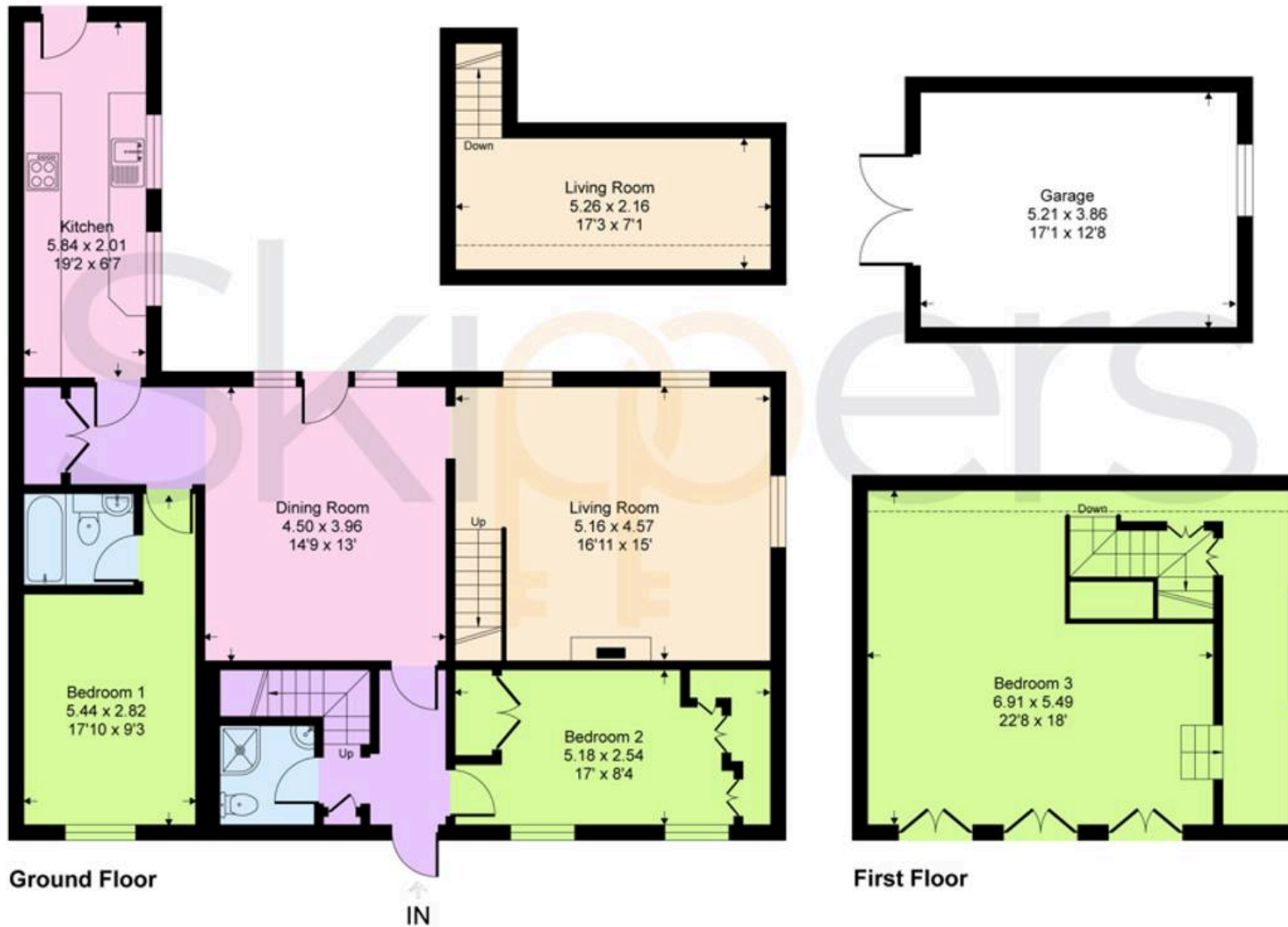
Glebe Barn The Street, TN25

Approximate Gross Internal Area = 146.2 sq m / 1574 sq ft

Approximate Garage Internal Area = 20 sq m / 216 sq ft

Approximate Total Internal Area = 166.2 sq m / 1790 sq ft

(excludes restricted head height)



This floor plan is for representation purposes only as defined by the RICS code of Measuring Practice (and IPMS where requested) and should be used as such by any prospective purchaser. Whilst every attempt has been made to ensure the accuracy contained here, the measurement of doors, windows and rooms is approximate and no responsibility is taken for any error, omission or mis-statement. Specifically no guarantee is given on the total area of the property if quoted on the plan. Any figure provided is for guidance only and should not be used for valuation purposes.



Skippers Estate Agents – Ashford

5 Kings Parade High Street, Ashford – TN24 8TA

01233 632383

ashford@skippers-ea.co.uk

skippers-ea.co.uk



