



Holcroft Court

Clipstone Street, W1W

£5,850 per month
(£1,350 per week)

Perfect for 4 sharers! This 4 bedroom flat in central Fitzrovia location is available immediately. Located within walking distance to all the amenities of Fitzrovia and Marylebone.



Holcroft Court

Clipstone Street, W1W

-

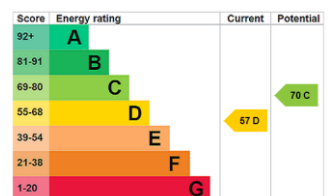


Perfect for 4 sharers! This 4 bedroom flat in central Fitzrovia location is available immediately. Located within walking distance to all the amenities of Fitzrovia and Marylebone. Just a short walk away from excellent cafes, dining, and shopping!

The flat is a duplex layout with 4 well proportioned bedrooms, 2 bathrooms, and one WC.

Holcroft Court is superbly located for public transport, with multiple Underground stations within very easy walking distance, including Great Portland Street, Warren Street, Regent's Park, and Oxford Circus.

Minimum Term: 12 months
Deposit Required: £8,100.00
Local Authority: City of Westminster
Council Tax Band: D
EPC Rating: D
Part Furnished

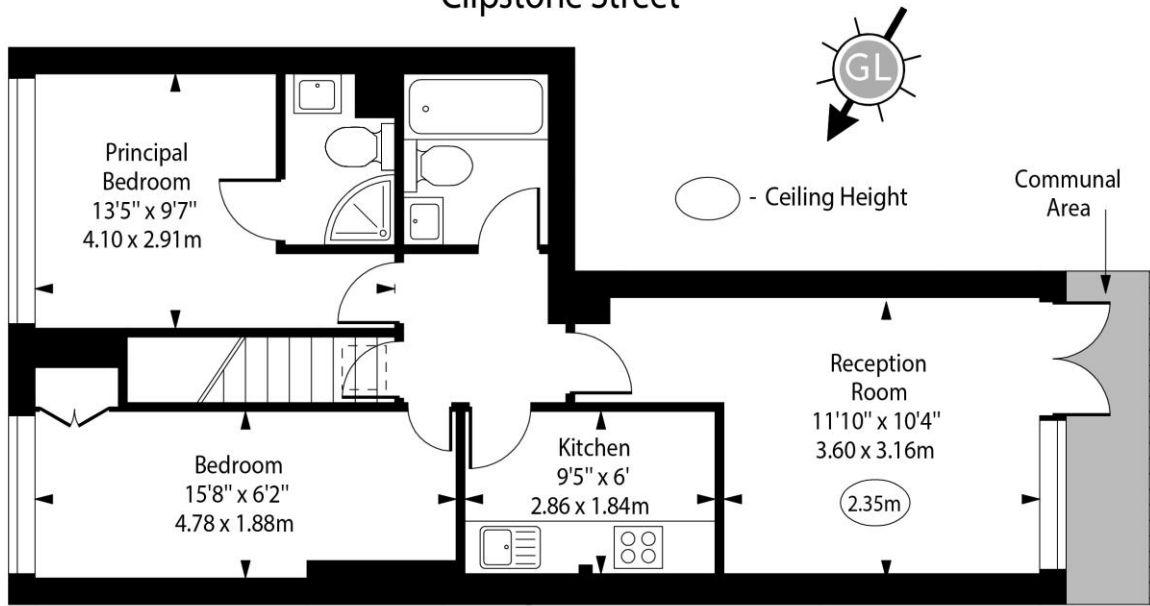


Chestertons Covent Garden Lettings

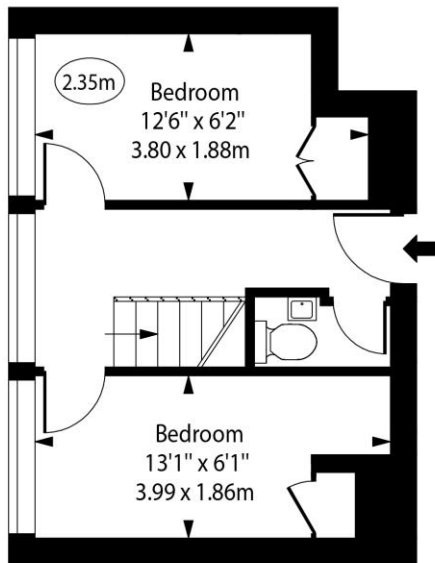
196 Shaftesbury Avenue
 Covent Garden
 London
 WC2H 8JF
 coventgardenlettingsusers@chestertons.co.uk
 02030408400
 chestertons.co.uk

Additional tenant charges apply (fees apply to non-AST tenancies only)
 Tenancy Agreement Fee: £300
 References per Tenant/Guarantor: £60
 Inventory check (approx. £100 – £250 inc. VAT)
 chestertons.co.uk/property-to-rent/applicable-fees

Holcroft Court, Clipstone Street



Fifth Floor



Fourth Floor

Approx Gross Internal Area 786 Sq Ft - 73.02 Sq M

Every attempt has been made to ensure the accuracy of the floor plan shown. However, all measurements, fixtures, fittings, and data shown are approximate interpretations and for illustrative purposes only. Measured according to the RICS. Not To Scale.

www.goldlens.co.uk

Ref. No. 029243D

