

shepherds  
A better home  
moving experience



44 Bengo Mews

Bengo, SG14 3TL

Price Guide £225,000



## 44 Bengo Mews

Bengo, SG14 3TL

EXTENDED LEASE WITH 150 YEARS REMAINING! A well presented one bedroom first floor purpose built maisonette situated in this highly popular mews development at the top of Bengo. Set within attractive grounds this double glazed and gas centrally heated property offers a superb opportunity for both first time buyers and investors with a spacious 22' lounge/diner, fitted kitchen and with the additional benefit of an allocated parking space for one car plus additional visitors spaces available.





- One bedroom first floor maisonette
- Popular new development in Bengoe
- Extended lease with 150 years remaining
- Allocated parking
- Attractive communal grounds

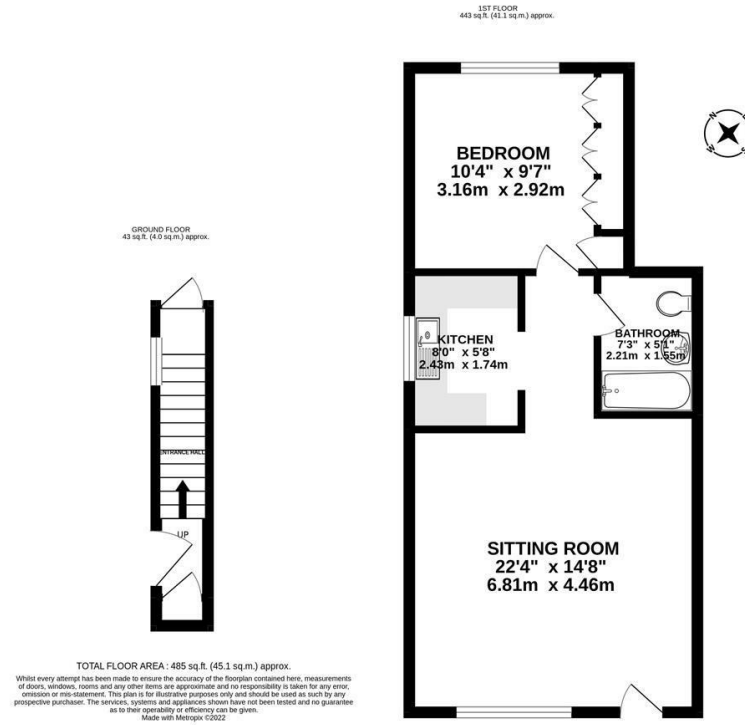
Tenure

Leasehold - 149 years remaining

Service Charge - £1,439.91 per annum



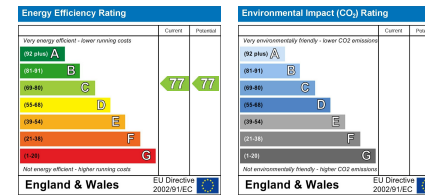
# Floor Plan



## Viewing

Please contact Shepherds of Hertford on 01992 551955 if you wish to arrange a viewing appointment for this property or require further information.

## Energy Performance Graph



These particulars, whilst believed to be accurate are set out as a general outline only for guidance and do not constitute any part of an offer or contract. Intending purchasers should not rely on them as statements of representation of fact, but must satisfy themselves by inspection or otherwise as to their accuracy. No person in this firm's employment has the authority to make or give any representation or warranty in respect of the property.

Riverside House, 6 Millbridge, Hertford, SG14 1PY  
Tel: 01992 551955 Email: enquiries@shepherdsfhertford.co.uk